

NDP52 antibody [GT422]

Cat. No. GTX630396

Host	Mouse
Clonality	Monoclonal
Isotype	IgG1
Application	WB, ICC/IF, IP
Reactivity	Human

Reference (2)

Package

100 µl, 25 µl

APPLICATION

Application Note

*Optimal dilutions/concentrations should be determined by the researcher.

Suggested dilution	Recommended dilution
WB	1:500-1:3000
ICC/IF	1:100-1:1000
IP	1:100-1:500

Not tested in other applications.

Calculated MW 52 kDa. ([Note](#))

PROPERTIES

Form	Liquid
Buffer	PBS
Preservative	No preservative
Storage	Store as concentrated solution. Centrifuge briefly prior to opening vial. For short-term storage (1-2 weeks), store at 4°C. For long-term storage, aliquot and store at -20°C or below. Avoid multiple freeze-thaw cycles.
Concentration	1 mg/ml (Please refer to the vial label for the specific concentration.)
Immunogen	Recombinant protein encompassing a sequence within the center region of human NDP52. The exact sequence is proprietary.
Purification	Affinity purified by Protein G.
Conjugation	Unconjugated

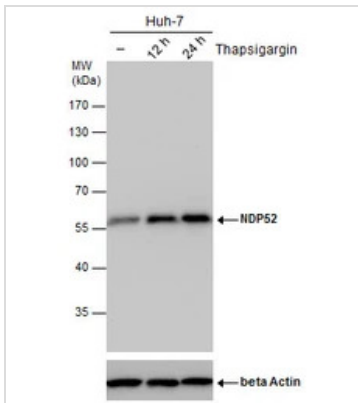
Note

For laboratory research use only. Not for any clinical, therapeutic, or diagnostic use in humans or animals. Not for animal or human consumption.

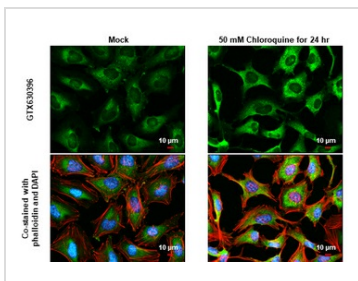
Purchasers shall not, and agree not to enable third parties to, analyze, copy, reverse engineer or otherwise attempt to determine the structure or sequence of the product.



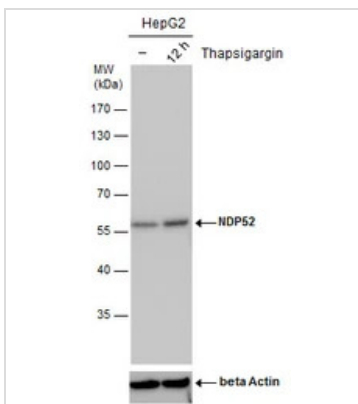
For full product information, images and publications, please visit our [website](#).

DATA IMAGES

GTX630396 WB Image

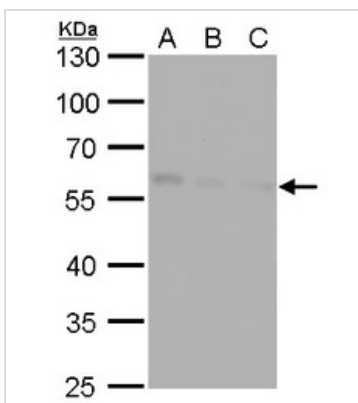
NDP52 antibody detects NDP52 protein by western blot analysis. Un-treated (-) and treated (+, Thapsigargin treatment for 12hrs and 24hrs) Huh-7 whole cell extracts (30 µg) were separated by 10% SDS-PAGE, and the membrane was blotted with NDP52 antibody (GTX630396) diluted by 1:500. The ACTB was used as internal control (GTX110564, 1:50000) shown at the bottom panel.


GTX630396 ICC/IF Image

NDP52 antibody [GT422] detects NDP52 protein at autophagosome by immunofluorescent analysis. Sample: Mock and treated HeLa cells were fixed in 4% paraformaldehyde at RT for 15 min. Green: NDP52 stained by NDP52 antibody [GT422] (GTX630396) diluted at 1:1000. Red: phalloidin, a cytoskeleton marker, diluted at 1:200. Blue: Fluoroshield with DAPI (GTX30920). Scale bar = 10 µm.


GTX630396 WB Image

NDP52 antibody detects NDP52 protein by western blot analysis. Un-treated (-) and treated (+, Thapsigargin treatment for 12hrs) HepG2 whole cell extracts (30 µg) were separated by 10% SDS-PAGE, and the membrane was blotted with NDP52 antibody (GTX630396) diluted by 1:500. The ACTB was used as internal control (GTX110564, 1:50000) shown at the bottom panel.


GTX630396 WB Image

NDP52 antibody [GT422] detects NDP52 protein by western blot analysis.
 A. 30 µg Huh7 whole cell lysate/extract
 B. 30 µg Hep3B whole cell lysate/extract
 C. 30 µg HepG2 whole cell lysate/extract
 10 % SDS-PAGE
 NDP52 antibody [GT422] (GTX630396) dilution: 1:1000



For full product information, images and publications, please visit our [website](https://www.genetex.com).