

UQCRC1 antibody [GT139]

Cat. No. GTX630413

Host	Mouse
Clonality	Monoclonal
Isotype	IgG1
Application	WB, ICC/IF
Reactivity	Human, Mouse, Rat

Package
100 µl, 25 µl

APPLICATION

Application Note

*Optimal dilutions/concentrations should be determined by the researcher.

Suggested dilution	Recommended dilution
WB	1:500-1:3000
ICC/IF	1:100-1:1000

Not tested in other applications.

Calculated MW 53 kDa. ([Note](#))

PROPERTIES

Form	Liquid
Buffer	PBS
Preservative	No preservative
Storage	Store as concentrated solution. Centrifuge briefly prior to opening vial. For short-term storage (1-2 weeks), store at 4°C. For long-term storage, aliquot and store at -20°C or below. Avoid multiple freeze-thaw cycles.
Concentration	1 mg/ml (Please refer to the vial label for the specific concentration.)
Immunogen	Recombinant protein encompassing a sequence within the center region of human UQCRC1. The exact sequence is proprietary.
Purification	Affinity purified by Protein G.
Conjugation	Unconjugated

Note

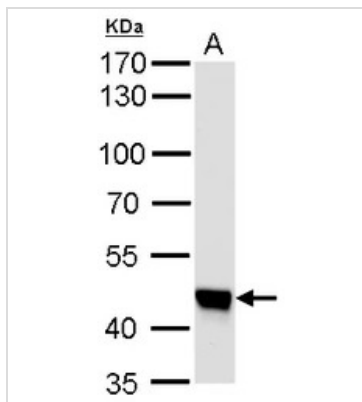
For laboratory research use only. Not for any clinical, therapeutic, or diagnostic use in humans or animals. Not for animal or human consumption.

Purchasers shall not, and agree not to enable third parties to, analyze, copy, reverse engineer or otherwise attempt to determine the structure or sequence of the product.



For full product information, images and publications, please visit our [website](#).

DATA IMAGES



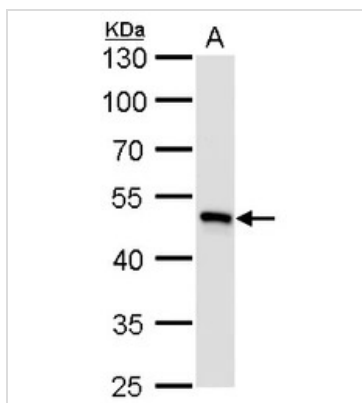
GTX630413 WB Image

UQCRC1 antibody [GT139] detects UQCRC1 protein by western blot analysis.

A. 50 µg mouse brain lysate/extract

7.5 % SDS-PAGE

UQCRC1 antibody [GT139] (GTX630413) dilution: 1:1000



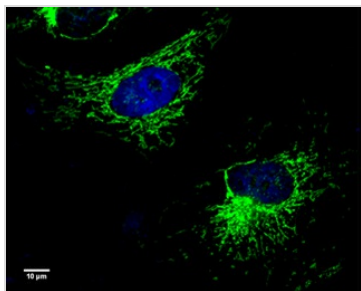
GTX630413 WB Image

UQCRC1 antibody [GT139] detects UQCRC1 protein by western blot analysis.

A. 50 µg rat brain lysate/extract

10 % SDS-PAGE

UQCRC1 antibody [GT139] (GTX630413) dilution: 1:1000



GTX630413 ICC/IF Image

UQCRC1 antibody [GT139] detects UQCRC1 protein at mitochondria by immunofluorescent analysis.

Sample: HeLa cells were fixed in 4% paraformaldehyde at room temperature.

Green: UQCRC1 protein stained by UQCRC1 antibody [GT139] (GTX630413) diluted at 1:100.

Blue: Hoechst 33342 staining.

Scale bar = 10 µm.



For full product information, images and publications, please visit our [website](https://www.genetex.com).