

## Histone H4K20me2 (dimethyl Lys20) antibody [GT282]

**Cat. No. GTX630544**

<b>Host</b>	Mouse
<b>Clonality</b>	Monoclonal
<b>Isotype</b>	IgG2b
<b>Applications</b>	WB, ICC/IF, IP, Dot, ChIP assay
<b>Reactivity</b>	Human, Yeast

References ( 1 )

Package

100 µl, 25 µl

## Applications

**Application Note**

\*Optimal dilutions/concentrations should be determined by the researcher.

Suggested dilution	Recommended dilution
WB	1:1000-1:10000
ICC/IF	1:100-1:1000
IP	1:100-1:500
Dot	1:500
ChIP assay	Assay dependent

Not tested in other applications.

## Properties

<b>Form</b>	Liquid
<b>Buffer</b>	PBS
<b>Preservative</b>	No preservatives
<b>Storage</b>	Store as concentrated solution. Centrifuge briefly prior to opening vial. For short-term storage (1-2 weeks), store at 4°C. For long-term storage, aliquot and store at -20°C or below. Avoid multiple freeze-thaw cycles.
<b>Concentration</b>	1 mg/ml (Please refer to the vial label for the specific concentration.)
<b>Immunogen</b>	Carrier-protein conjugated synthetic peptide surrounding di-methyl Lys20 of human Histone H4. The exact sequence is proprietary.
<b>Purification</b>	Affinity purified by Protein G.
<b>Conjugation</b>	Unconjugated

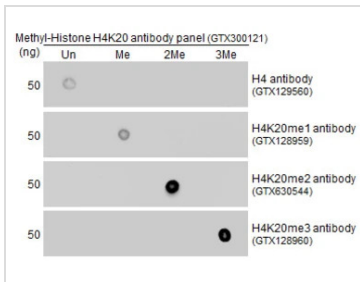
**Note**

For laboratory research use only. Not for any clinical, therapeutic, or diagnostic use in humans or animals. Not for animal or human consumption.

Purchasers shall not, and agree not to enable third parties to, analyze, copy, reverse engineer or otherwise attempt to determine the structure or sequence of the product.

For full product information, images and publications, please visit our [website](#).

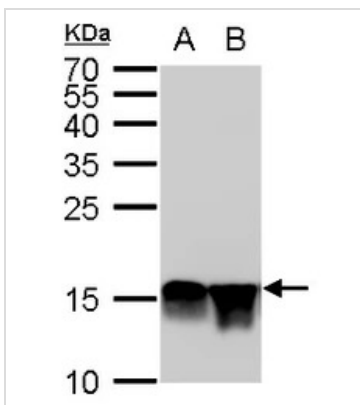
DATA IMAGES



**GTX630544 Dot Image**

Dot blot analysis of various of H4K20 methylation peptides using Histone H4K20me2 (dimethyl Lys20) antibody [GT282] (GTX630544) at antibody dilution of 1:500.

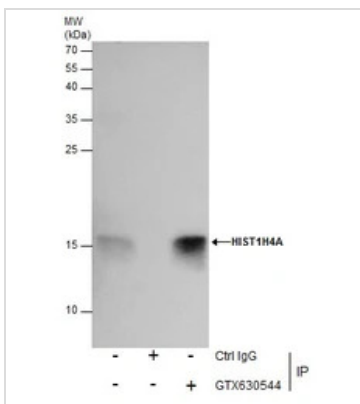
Un : H4 protein peptide  
 Me : H4K20 mono-methyl peptide  
 2Me : H4K20 di-methyl peptide  
 3Me : H4K20 Tri-methyl peptide



**GTX630544 WB Image**

Histone H4 (di methyl Lys20) antibody [GT282] detects Histone H4 (di methyl Lys20) protein by western blot analysis.

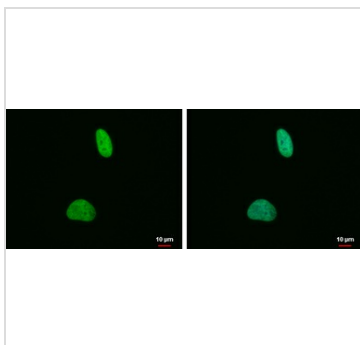
A. 30 µg HeLa whole cell lysate/extract  
 B. 30 µg HeLa nuclear lysate/extract  
 Histone H4 (di methyl Lys20) antibody [GT282] (GTX630544) dilution: 1:5000



**GTX630544 IP Image**

Immunoprecipitation of HIST1H4A protein from HeLa whole cell extracts using 5 µg of Histone H4K20me2 (dimethyl Lys20) antibody [GT282] (GTX630544).

Western blot analysis was performed using Histone H4K20me2 (dimethyl Lys20) antibody [GT282] (GTX630544).  
 EasyBlot anti-mouse IgG (GTX221667-01) was used as a secondary reagent.



**GTX630544 ICC/IF Image**

Histone H4 (di-Methyl Lys20) antibody [GT282] detects Histone H4 (di-Methyl Lys20) protein at nucleus by immunofluorescent analysis.

Sample: HeLa cells were fixed in 4% paraformaldehyde at RT for 15 min.  
 Green: Histone H4 (di-Methyl Lys20) protein stained by Histone H4 (di-Methyl Lys20) antibody [GT282] (GTX630544) diluted at 1:500.  
 Blue: Hoechst 33342 staining.



For full product information, images and publications, please visit our [website](http://www.genetex.com).