

Dengue virus NS1 protein antibody [GT4212]

Cat. No. GTX630556

Host	Mouse
Clonality	Monoclonal
Isotype	IgG2a
Application	WB, ICC/IF
Reactivity	Dengue virus 2, Dengue virus 4

Reference (3)

Package

100 µl, 25 µl

APPLICATION

Application Note

*Optimal dilutions/concentrations should be determined by the researcher.

Suggested dilution	Recommended dilution
WB	1:5000-1:20000
ICC/IF	1:100-1:1000

Not tested in other applications.

Calculated MW 40 kDa. ([Note](#))

Product Note The validated Dengue virus serotype for each application may differ. Please refer to the validated data. This antibody does not cross-react with Zika and CHIKV Envelope protein.

PROPERTIES

Form	Liquid
Buffer	PBS, 20% Glycerol
Preservative	No Preservative
Storage	Store as concentrated solution. Centrifuge briefly prior to opening vial. For short-term storage (1-2 weeks), store at 4°C. For long-term storage, aliquot and store at -20°C or below. Avoid multiple freeze-thaw cycles.
Concentration	1 mg/ml (Please refer to the vial label for the specific concentration.)
Immunogen	Recombinant protein encompassing a sequence within the center region of Dengue virus NS1 protein (Dengue virus 2 (strain 16681 PDK 53)). The exact sequence is proprietary.
Purification	Affinity purified by Protein G.
Conjugation	Unconjugated

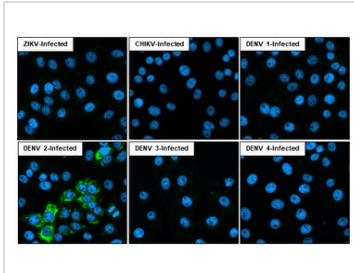


For full product information, images and publications, please visit our [website](#).

For laboratory research use only. Not for any clinical, therapeutic, or diagnostic use in humans or animals. Not for animal or human consumption.

Note

Purchasers shall not, and agree not to enable third parties to, analyze, copy, reverse engineer or otherwise attempt to determine the structure or sequence of the product.

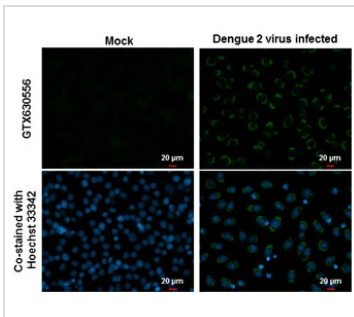
DATA IMAGES

GTX630556 ICC/IF Image

Immunofluorescent analysis of Dengue virus infected cells using Dengue virus NS1 protein antibody [GT4212] antibody (GTX630556).

Sample: Multiple virus infected cells slide.

Green: Dengue virus NS1 protein antibody [GT4212] antibody (GTX630556) diluted at 1:100.

Blue: Fluoroshield with DAPI (GTX30920).

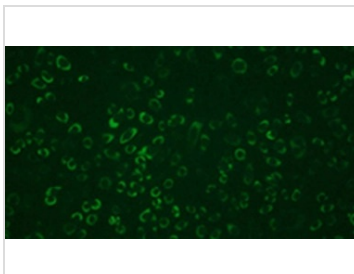

GTX630556 ICC/IF Image

NS1 (Dengue virus) antibody [GT4212] detects NS1 (Dengue virus) protein at cytoplasm by immunofluorescent analysis.

Samples: BHK-21 cells mock (left) and infected with Dengue virus 2 (right) were fixed in MeOH.

Green: NS1 (Dengue virus) protein stained by NS1 (Dengue virus) antibody [GT4212] (GTX630556) diluted at 1:1000.

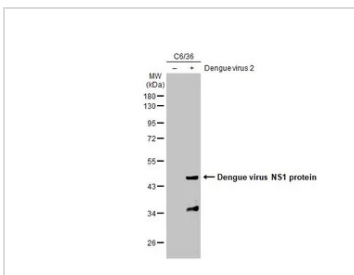
Blue: Hoechst 33342 staining.


GTX630556 ICC/IF Image

NS1 (DEN) antibody [GT4212] (GTX630556) mouse mAb. IFA of MeOH/Acetone-fixed DEN2-infected BHK-21 cells (1:1000).

Green: non-structural protein 1 (Dengue virus 2) protein stained by NS1 (Dengue virus) antibody [GT4212] (GTX630556) diluted at 1:1000.

Blue: DAPI staining.


GTX630556 WB Image

Non-infected (–) and infected (+) C6/36 whole cell extracts (15 µg) were separated by 10% SDS-PAGE, and the membrane was blotted with Dengue virus NS1 protein antibody [GT4212] (GTX630556) diluted at 1:20000. The HRP-conjugated anti-mouse IgG antibody (GTX213111-01) was used to detect the primary antibody.



For full product information, images and publications, please visit our [website](https://www.genetex.com).