

## SOD2 antibody [GT1433]

Cat. No. GTX630559

<b>Host</b>	Mouse
<b>Clonality</b>	Monoclonal
<b>Isotype</b>	IgG1
<b>Applications</b>	WB, ICC/IF, IHC-P
<b>Reactivity</b>	Human, Mouse, Rat

References ( 3 )

Package

100 µl, 25 µl

## Applications

## Application Note

\*Optimal dilutions/concentrations should be determined by the researcher.

Suggested dilution	Recommended dilution
WB	1:500-1:3000
ICC/IF	1:100-1:1000
IHC-P	1:100-1:1000

Not tested in other applications.

**Observed MW (kDa)** 25 kDa.

## Properties

<b>Form</b>	Liquid
<b>Buffer</b>	PBS
<b>Preservative</b>	No preservatives
<b>Storage</b>	Store as concentrated solution. Centrifuge briefly prior to opening vial. For short-term storage (1-2 weeks), store at 4°C. For long-term storage, aliquot and store at -20°C or below. Avoid multiple freeze-thaw cycles.
<b>Concentration</b>	1 mg/ml (Please refer to the vial label for the specific concentration.)
<b>Immunogen</b>	Recombinant protein encompassing a sequence within the center region of human SOD2. The exact sequence is proprietary.
<b>Purification</b>	Affinity purified by Protein G.
<b>Conjugation</b>	Unconjugated

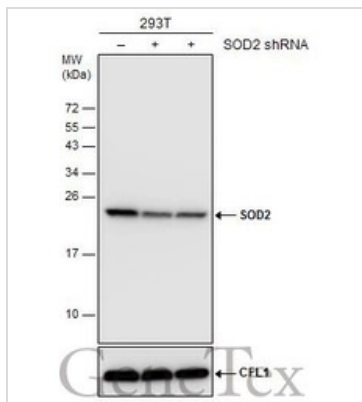
## Note

For laboratory research use only. Not for any clinical, therapeutic, or diagnostic use in humans or animals. Not for animal or human consumption.

Purchasers shall not, and agree not to enable third parties to, analyze, copy, reverse engineer or otherwise attempt to determine the structure or sequence of the product.

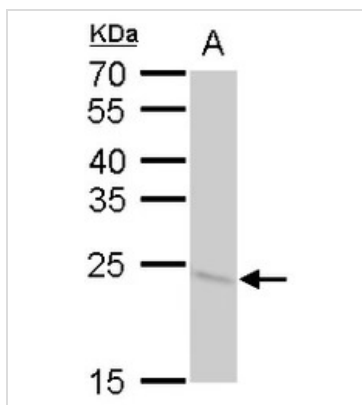
For full product information, images and publications, please visit our [website](#).

DATA IMAGES



**GTX630559 WB Image**

Non-transfected (-) and transfected (+) 293T whole cell extracts (30 µg) were separated by 15% SDS-PAGE, and the membrane was blotted with SOD2 antibody [GT1433] (GTX630559) diluted at 1:2000.



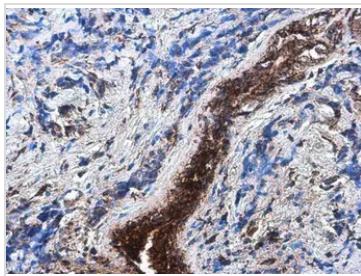
**GTX630559 WB Image**

SOD2 antibody [GT1433] detects SOD2 protein by western blot analysis.

A. 50 µg rat brain lysate/extract

12 % SDS-PAGE

SOD2 antibody [GT1433] (GTX630559) dilution: 1:1000



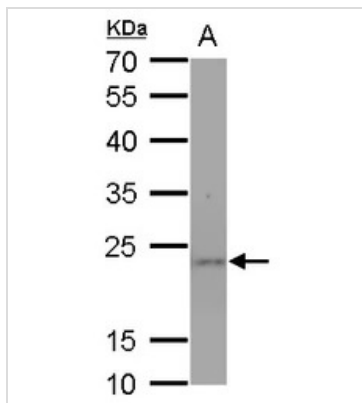
**GTX630559 IHC-P Image**

SOD2 antibody [GT1433] detects SOD2 protein at cytoplasm by immunohistochemical analysis.

Sample: Paraffin-embedded human breast carcinoma.

SOD2 stained by SOD2 antibody [GT1433] (GTX630559) diluted at 1:200.

Antigen Retrieval: Citrate buffer, pH 6.0, 15 min



**GTX630559 WB Image**

SOD2 antibody [GT1433] detects SOD2 protein by western blot analysis.

A. 50 µg mouse brain lysate/extract

12 % SDS-PAGE

SOD2 antibody [GT1433] (GTX630559) dilution: 1:1000



For full product information, images and publications, please visit our [website](http://www.genetex.com).