

SOD2 antibody [GT17112]

Cat. No. GTX630560

Host	Mouse
Clonality	Monoclonal
Isotype	IgG2b
Applications	WB, ICC/IF, IHC-P
Reactivity	Human, Mouse, Rat

Package
100 µl, 25 µl

Applications

Application Note

*Optimal dilutions/concentrations should be determined by the researcher.

Suggested dilution	Recommended dilution
WB	1:500-1:10000
ICC/IF	1:100-1:1000
IHC-P	1:100-1:1000

Not tested in other applications.

Observed MW (kDa) 25 kDa.

Properties

Form	Liquid
Buffer	PBS
Preservative	No preservatives
Storage	Store as concentrated solution. Centrifuge briefly prior to opening vial. For short-term storage (1-2 weeks), store at 4°C. For long-term storage, aliquot and store at -20°C or below. Avoid multiple freeze-thaw cycles.
Concentration	1 mg/ml (Please refer to the vial label for the specific concentration.)
Immunogen	Recombinant protein encompassing a sequence within the center region of human SOD2. The exact sequence is proprietary.
Purification	Affinity purified by Protein G.
Conjugation	Unconjugated

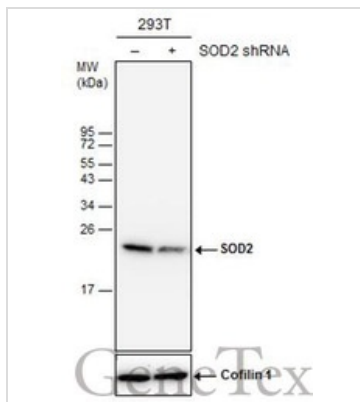
Note

For laboratory research use only. Not for any clinical, therapeutic, or diagnostic use in humans or animals. Not for animal or human consumption.

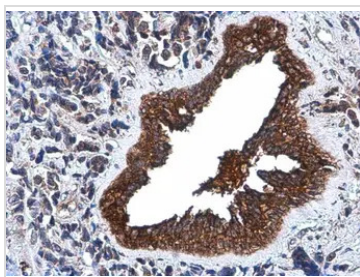
Purchasers shall not, and agree not to enable third parties to, analyze, copy, reverse engineer or otherwise attempt to determine the structure or sequence of the product.



For full product information, images and publications, please visit our [website](#).

DATA IMAGES

GTx630560 WB Image

Non-transfected (-) and transfected (+) 293T whole cell extracts (30 µg) were separated by 15% SDS-PAGE, and the membrane was blotted with SOD2 antibody [GT17112] (GTx630560) diluted at 1:5000.

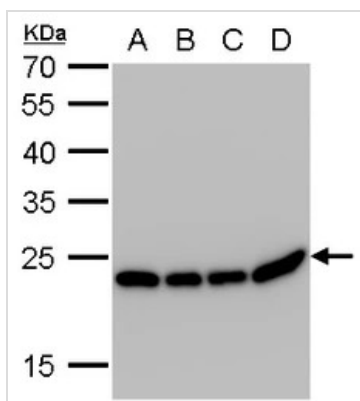

GTx630560 IHC-P Image

SOD2 antibody [GT17112] detects SOD2 protein at cytoplasm by immunohistochemical analysis.

Sample: Paraffin-embedded human breast carcinoma.

SOD2 stained by SOD2 antibody [GT17112] (GTx630560) diluted at 1:200.

Antigen Retrieval: Citrate buffer, pH 6.0, 15 min


GTx630560 WB Image

SOD2 antibody [GT17112] detects SOD2 protein by western blot analysis.

A. 30 µg 293T whole cell lysate/extract

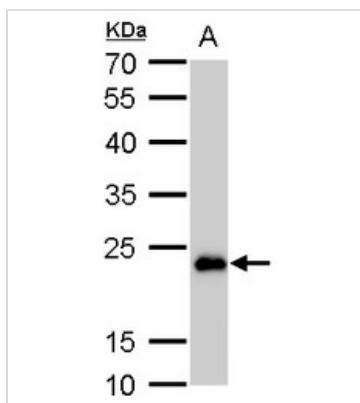
B. 30 µg A431 whole cell lysate/extract

C. 30 µg HeLa whole cell lysate/extract |

D. 30 µg HepG2 whole cell lysate/extract

12 % SDS-PAGE

SOD2 antibody [GT17112] (GTx630560) dilution: 1:1000


GTx630560 WB Image

SOD2 antibody [GT17112] detects SOD2 protein by western blot analysis.

A. 50 µg mouse brain lysate/extract

12 % SDS-PAGE

SOD2 antibody [GT17112] (GTx630560) dilution: 1:1000



For full product information, images and publications, please visit our [website](http://www.genetex.com).