

## COPD antibody [GT189]

Cat. No. GTX630561

Host	Mouse
Clonality	Monoclonal
Isotype	IgG2b
Applications	WB, IHC-P, IHC-Fr
Reactivity	Human, Mouse, Rat

Package  
100 µl, 25 µl

## Applications

## Application Note

\*Optimal dilutions/concentrations should be determined by the researcher.

Suggested dilution	Recommended dilution
WB	1:1000-1:20000
IHC-P	1:100-1:1000
IHC-Fr	1:100-1:1000

Not tested in other applications.

Calculated MW 57 kDa. ( [Note](#) )

## Properties

Form	Liquid
Buffer	PBS
Preservative	No preservatives
Storage	Store as concentrated solution. Centrifuge briefly prior to opening vial. For short-term storage (1-2 weeks), store at 4°C. For long-term storage, aliquot and store at -20°C or below. Avoid multiple freeze-thaw cycles.
Concentration	1 mg/ml (Please refer to the vial label for the specific concentration.)
Immunogen	Recombinant protein encompassing a sequence within the center region of human COPD. The exact sequence is proprietary.
Purification	Affinity purified by Protein G.
Conjugation	Unconjugated

## Note

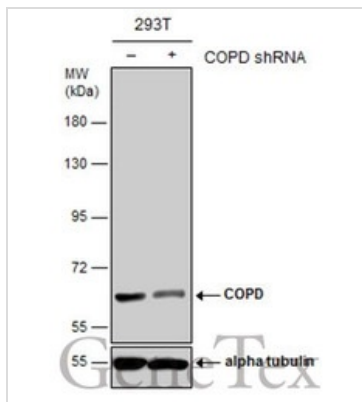
For laboratory research use only. Not for any clinical, therapeutic, or diagnostic use in humans or animals. Not for animal or human consumption.

Purchasers shall not, and agree not to enable third parties to, analyze, copy, reverse engineer or otherwise attempt to determine the structure or sequence of the product.



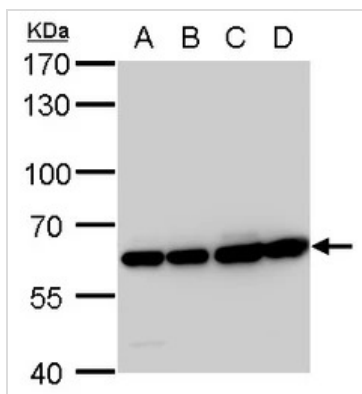
For full product information, images and publications, please visit our [website](#).

DATA IMAGES



**GTX630561 WB Image**

Non-transfected (–) and transfected (+) 293T whole cell extracts (30 µg) were separated by 7.5% SDS-PAGE, and the membrane was blotted with COPD antibody [GT189] (GTX630561) diluted at 1:20000.



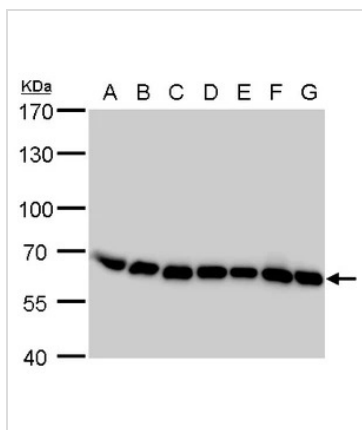
**GTX630561 WB Image**

COPD antibody [GT189] detects COPD protein by western blot analysis.

- A. 30 µg 293T whole cell lysate/extract
- B. 30 µg A431 whole cell lysate/extract
- C. 30 µg HeLa whole cell lysate/extract
- D. 30 µg HepG2 whole cell lysate/extract

7.5 % SDS-PAGE

COPD antibody [GT189] (GTX630561) dilution: 1:10000



**GTX630561 WB Image**

COPD antibody [GT189] detects COPD protein by western blot analysis.

- A. 30 µg Neuro2A whole cell lysate/extract
- B. 30 µg GL261 whole cell lysate/extract
- C. 30 µg C8D30 whole cell lysate/extract
- D. 30 µg NIH-3T3 whole cell lysate/extract
- E. 30 µg BCL-1 whole cell lysate/extract
- F. 30 µg Raw 264.7 whole cell lysate/extract
- G. 30 µg C2C12 whole cell lysate/extract

7.5 % SDS-PAGE

COPD antibody [GT189] (GTX630561) dilution: 1:5000



For full product information, images and publications, please visit our [website](http://www.genetex.com).