

Glutamine synthetase antibody [GT1055]

Cat. No. GTX630654

Host	Mouse
Clonality	Monoclonal
Isotype	IgG1
Application	WB, ICC/IF, IHC-P, IHC-Fr
Reactivity	Human, Mouse, Rat

Reference (3)
 Package
 100 µl, 25 µl

APPLICATION

Application Note

*Optimal dilutions/concentrations should be determined by the researcher.

Suggested dilution	Recommended dilution
WB	1:500-1:3000
ICC/IF	1:100-1:1000
IHC-P	1:100-1:1000
IHC-Fr	1:100-1:1000

Not tested in other applications.

Calculated MW 42 kDa. ([Note](#))

PROPERTIES

Form	Liquid
Buffer	PBS
Preservative	No preservative
Storage	Store as concentrated solution. Centrifuge briefly prior to opening vial. For short-term storage (1-2 weeks), store at 4°C. For long-term storage, aliquot and store at -20°C or below. Avoid multiple freeze-thaw cycles.
Concentration	1 mg/ml (Please refer to the vial label for the specific concentration.)
Immunogen	Full length human Glutamine synthetase Recombinant protein.
Purification	Affinity purified by Protein G.
Conjugation	Unconjugated

Note

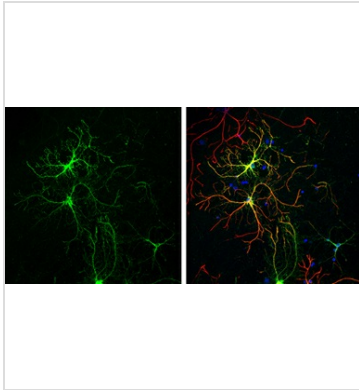
For laboratory research use only. Not for any clinical, therapeutic, or diagnostic use in humans or animals. Not for animal or human consumption.

Purchasers shall not, and agree not to enable third parties to, analyze, copy, reverse engineer or otherwise attempt to determine the structure or sequence of the product.



For full product information, images and publications, please visit our [website](#).

DATA IMAGES



GTX630654 ICC/IF Image

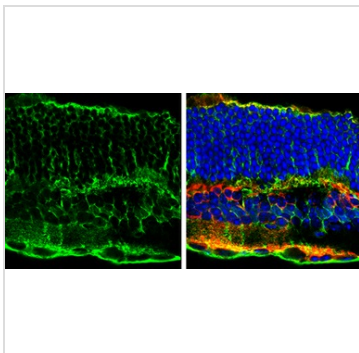
Glutamine synthetase antibody [GT1055] detects Glutamine synthetase protein at cytoplasm by immunofluorescent analysis.

Sample: Cultured rat E18 primary cortical neuron, DIV 8. Cells were fixed in 4% paraformaldehyde at RT for 15 min.

Green: Glutamine synthetase protein stained by Glutamine synthetase antibody [GT1055] (GTX630654) diluted at 1:250.

Red: GFAP, stained by GFAP antibody (GTX27260) diluted at 1:250.

Blue: Fluoroshield with DAPI (GTX30920).



GTX630654 IHC-Fr Image

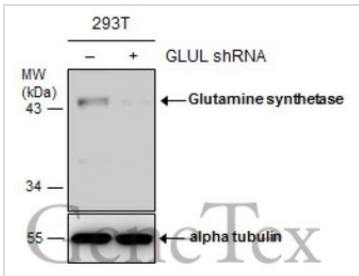
Glutamine synthetase antibody [GT1055] detects Glutamine synthetase protein by immunohistochemical analysis.

Sample: Frozen sectioned adult mouse retina.

Green: Glutamine synthetase protein stained by Glutamine synthetase antibody [GT1055] (GTX630654) diluted at 1:250.

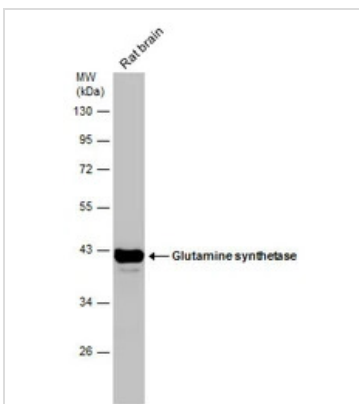
Red: PKC alpha protein stained by PKC alpha antibody [GT1876] (GTX130453) diluted at 1:250.

Blue: Fluoroshield with DAPI (GTX30920).



GTX630654 WB Image

Non-transfected (-) and transfected (+) 293T whole cell extracts (30 µg) were separated by 10% SDS-PAGE, and the membrane was blotted with Glutamine synthetase antibody [GT1055] (GTX630654) diluted at 1:500.



GTX630654 WB Image

Rat tissue extract (50 µg) was separated by 10% SDS-PAGE, and the membrane was blotted with Glutamine synthetase antibody [GT1055] (GTX630654) diluted at 1:5000.



For full product information, images and publications, please visit our [website](https://www.genetex.com).