

Triosephosphate isomerase antibody [GT181]

Cat. No. GTX630779

Host	Mouse
Clonality	Monoclonal
Isotype	IgG3
Applications	WB, ICC/IF, IHC-P
Reactivity	Human, Mouse, Rat

Package
100 µl, 25 µl

Applications

Application Note

*Optimal dilutions/concentrations should be determined by the researcher.

Suggested dilution	Recommended dilution
WB	1:500-1:3000
ICC/IF	1:100-1:1000
IHC-P	1:100-1:1000

Not tested in other applications.

Calculated MW 31 kDa. ([Note](#))

Properties

Form	Liquid
Buffer	PBS
Preservative	No preservatives
Storage	Store as concentrated solution. Centrifuge briefly prior to opening vial. For short-term storage (1-2 weeks), store at 4°C. For long-term storage, aliquot and store at -20°C or below. Avoid multiple freeze-thaw cycles.
Concentration	1 mg/ml (Please refer to the vial label for the specific concentration.)
Immunogen	Carrier-protein conjugated synthetic peptide encompassing a sequence within the C-terminus region of human Triosephosphate isomerase. The exact sequence is proprietary.
Purification	Affinity purified by Protein G.
Conjugation	Unconjugated

Note

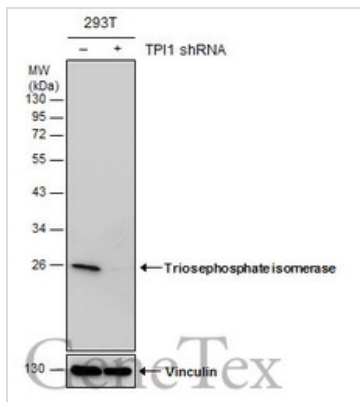
For laboratory research use only. Not for any clinical, therapeutic, or diagnostic use in humans or animals. Not for animal or human consumption.

Purchasers shall not, and agree not to enable third parties to, analyze, copy, reverse engineer or otherwise attempt to determine the structure or sequence of the product.

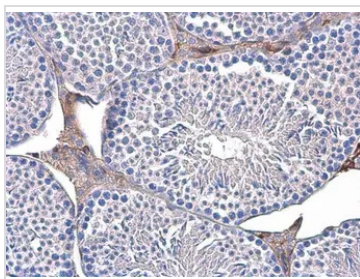


For full product information, images and publications, please visit our [website](#).

DATA IMAGES

**GTX630779 WB Image**

Non-transfected (-) and transfected (+) 293T whole cell extracts (30 µg) were separated by 12% SDS-PAGE, and the membrane was blotted with Triosephosphate isomerase antibody [GT181] (GTX630779) diluted at 1:500.

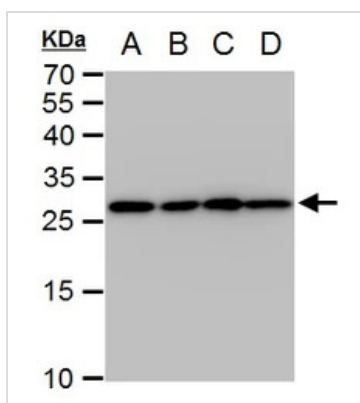
**GTX630779 IHC-P Image**

Triosephosphate isomerase antibody [GT181] detects Triosephosphate isomerase protein at cytoplasm by immunohistochemical analysis.

Sample: Paraffin-embedded mouse testis.

Triosephosphate isomerase stained by Triosephosphate isomerase antibody [GT181] (GTX630779) diluted at 1:100.

Antigen Retrieval: Citrate buffer, pH 6.0, 15 min

**GTX630779 WB Image**

Triosephosphate isomerase antibody [GT181] detects Triosephosphate isomerase protein by western blot analysis.

A. 30 µg 293T whole cell extract

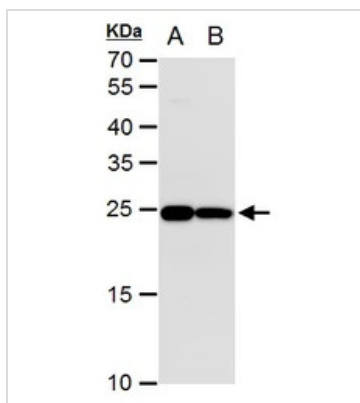
B. 30 µg A431 whole cell extract

C. 30 µg HeLa whole cell extract

D. 30 µg HepG2 whole cell extract

12 % SDS-PAGE

Triosephosphate isomerase antibody [GT181] (GTX630779) dilution: 1:1000

**GTX630779 WB Image**

Triosephosphate isomerase antibody [GT181] detects Triosephosphate isomerase protein by western blot analysis.

A. 30 µg PC-12 whole cell extract

B. 30 µg Rat2 whole cell extract

12 % SDS-PAGE

Triosephosphate isomerase antibody [GT181] (GTX630779) dilution: 1:1000



For full product information, images and publications, please visit our [website](http://www.genetex.com).