

Triosephosphate isomerase antibody [GT3711]

Cat. No. GTX630780

Host	Mouse
Clonality	Monoclonal
Isotype	IgG2a
Applications	WB, IHC-P
Reactivity	Human, Mouse, Rat

Package
100 µl, 25 µl

Applications

Application Note

*Optimal dilutions/concentrations should be determined by the researcher.

Suggested dilution	Recommended dilution
WB	1:500-1:3000
IHC-P	1:100-1:1000

Not tested in other applications.

Calculated MW 31 kDa. ([Note](#))

Properties

Form	Liquid
Buffer	PBS
Preservative	No preservatives
Storage	Store as concentrated solution. Centrifuge briefly prior to opening vial. For short-term storage (1-2 weeks), store at 4°C. For long-term storage, aliquot and store at -20°C or below. Avoid multiple freeze-thaw cycles.
Concentration	1 mg/ml (Please refer to the vial label for the specific concentration.)
Immunogen	Carrier-protein conjugated synthetic peptide encompassing a sequence within the C-terminus region of human Triosephosphate isomerase. The exact sequence is proprietary.
Purification	Affinity purified by Protein G.
Conjugation	Unconjugated

Note

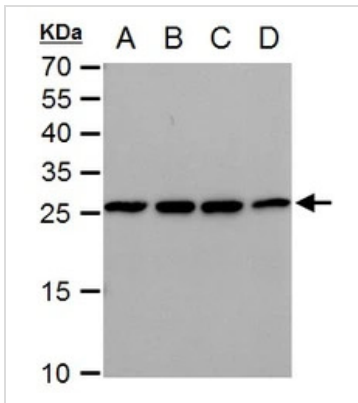
For laboratory research use only. Not for any clinical, therapeutic, or diagnostic use in humans or animals. Not for animal or human consumption.

Purchasers shall not, and agree not to enable third parties to, analyze, copy, reverse engineer or otherwise attempt to determine the structure or sequence of the product.



For full product information, images and publications, please visit our [website](#).

DATA IMAGES

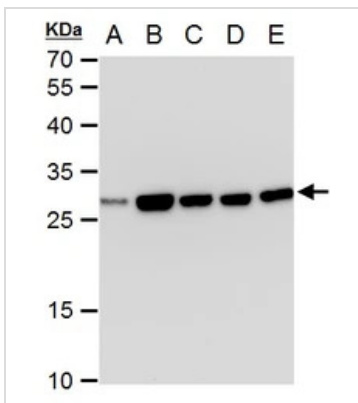


GTX630780 WB Image

Triosephosphate isomerase antibody [GT3711] detects Triosephosphate isomerase protein by western blot analysis.

- A. 30 μ g 293T whole cell extract
 - B. 30 μ g A431 whole cell extract
 - C. 30 μ g HeLa whole cell extract
 - D. 30 μ g HepG2 whole cell extract
- 12 % SDS-PAGE

Triosephosphate isomerase antibody [GT3711] (GTX630780) dilution: 1:1000

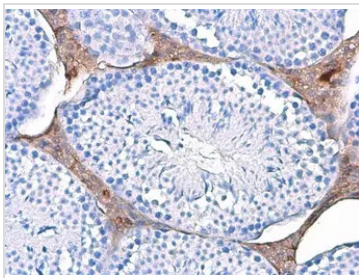


GTX630780 WB Image

Triosephosphate isomerase antibody [GT3711] detects Triosephosphate isomerase protein by western blot analysis.

- A. 30 μ g Neuro2A whole cell extract
 - B. 30 μ g C8D30 whole cell extract
 - C. 30 μ g NIH-3T3 whole cell extract
 - D. 30 μ g Raw264.7 whole cell extract
 - E. 30 μ g C2C12 whole cell extract
- 12 % SDS-PAGE

Triosephosphate isomerase antibody [GT3711] (GTX630780) dilution: 1:1000



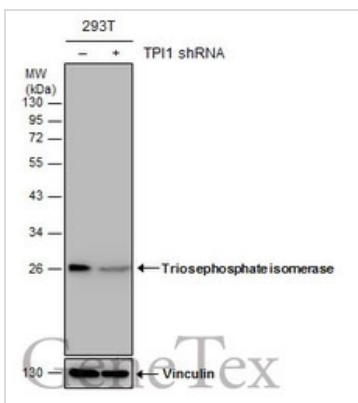
GTX630780 IHC-P Image

Triosephosphate isomerase antibody [GT3711] detects Triosephosphate isomerase protein at cytoplasm by immunohistochemical analysis.

Sample: Paraffin-embedded mouse testis.

Triosephosphate isomerase stained by Triosephosphate isomerase antibody [GT3711] (GTX630780) diluted at 1:100.

Antigen Retrieval: Citrate buffer, pH 6.0, 15 min



GTX630780 WB Image

Non-transfected (-) and transfected (+) 293T whole cell extracts (30 μ g) were separated by 12% SDS-PAGE, and the membrane was blotted with Triosephosphate isomerase antibody [GT3711] (GTX630780) diluted at 1:500.



For full product information, images and publications, please visit our [website](http://www.genetex.com).