

# ETHE1 antibody [GT1621]

**Cat. No. GTX630994**

<b>Host</b>	Mouse
<b>Clonality</b>	Monoclonal
<b>Isotype</b>	IgG2b
<b>Applications</b>	WB, ICC/IF
<b>Reactivity</b>	Human, Mouse, Rat

**Package**  
100 µl, 25 µl

## Applications

### Application Note

\*Optimal dilutions/concentrations should be determined by the researcher.

Suggested dilution	Recommended dilution
WB	1:500-1:3000
ICC/IF	1:100-1:1000

Not tested in other applications.

**Calculated MW** 28 kDa. ( [Note](#) )

## Properties

<b>Form</b>	Liquid
<b>Buffer</b>	PBS
<b>Preservative</b>	No preservative
<b>Storage</b>	Store as concentrated solution. Centrifuge briefly prior to opening vial. For short-term storage (1-2 weeks), store at 4°C. For long-term storage, aliquot and store at -20°C or below. Avoid multiple freeze-thaw cycles.
<b>Concentration</b>	1 mg/ml (Please refer to the vial label for the specific concentration.)
<b>Immunogen</b>	Full length human ETHE1 Recombinant protein.
<b>Purification</b>	Affinity purified by Protein G.
<b>Conjugation</b>	Unconjugated

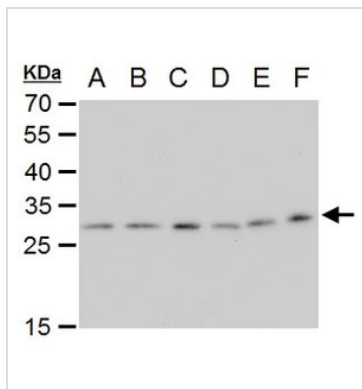
### Note

For laboratory research use only. Not for any clinical, therapeutic, or diagnostic use in humans or animals. Not for animal or human consumption.

Purchasers shall not, and agree not to enable third parties to, analyze, copy, reverse engineer or otherwise attempt to determine the structure or sequence of the product.



For full product information, images and publications, please visit our [website](#).

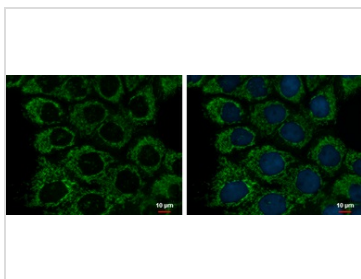
**DATA IMAGES**

**GTX630994 WB Image**

ETHE1 antibody [GT1621] detects ETHE1 protein by western blot analysis.

- A. 30  $\mu$ g Neuro2A whole cell extract
- B. 30  $\mu$ g GL261 whole cell extract
- C. 30  $\mu$ g C8D30 whole cell extract
- D. 30  $\mu$ g NIH-3T3 whole cell extract
- E. 30  $\mu$ g Raw264.7 whole cell extract
- F. 30  $\mu$ g C2C12 whole cell extract

12 % SDS-PAGE

ETHE1 antibody [GT1621] (GTX630994) dilution: 1:1000

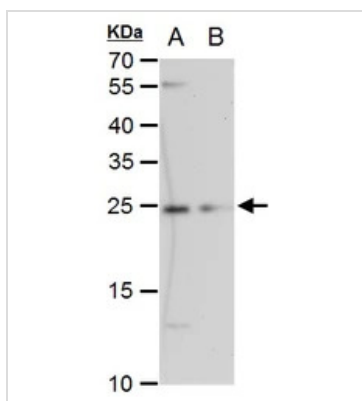

**GTX630994 ICC/IF Image**

ETHE1 antibody [GT1621] detects ETHE1 protein at mitochondria by immunofluorescent analysis.

Sample: A431 cells were fixed in 2% paraformaldehyde/culture medium at 37°C for 30 min.

Green: ETHE1 protein stained by ETHE1 antibody [GT1621] (GTX630994) diluted at 1:500.

Blue: Hoechst 33342 staining.


**GTX630994 WB Image**

ETHE1 antibody [GT1621] detects ETHE1 protein by western blot analysis.

- A. 30  $\mu$ g PC-12 whole cell extract
- B. 30  $\mu$ g Rat2 whole cell extract

12 % SDS-PAGE

ETHE1 antibody [GT1621] (GTX630994) dilution: 1:1000



For full product information, images and publications, please visit our [website](https://www.genetex.com).