

# FIS1 antibody [GT9810]

**Cat. No. GTX631209**

<b>Host</b>	Mouse
<b>Clonality</b>	Monoclonal
<b>Isotype</b>	IgG2a
<b>Applications</b>	WB, ICC/IF
<b>Reactivity</b>	Human, Mouse, Rat

**References** ( 3 )

**Package**

100 µl, 25 µl

## Applications

### Application Note

\*Optimal dilutions/concentrations should be determined by the researcher.

Suggested dilution	Recommended dilution
WB	1:500-1:3000
ICC/IF	1:100-1:20000

Not tested in other applications.

**Calculated MW** 17 kDa. ( [Note](#) )

## Properties

<b>Form</b>	Liquid
<b>Buffer</b>	PBS
<b>Preservative</b>	No preservative
<b>Storage</b>	Store as concentrated solution. Centrifuge briefly prior to opening vial. For short-term storage (1-2 weeks), store at 4°C. For long-term storage, aliquot and store at -20°C or below. Avoid multiple freeze-thaw cycles.
<b>Concentration</b>	1.9 mg/ml (Please refer to the vial label for the specific concentration.)
<b>Immunogen</b>	Full length human FIS1 Recombinant protein.
<b>Purification</b>	Affinity purified by Protein G.
<b>Conjugation</b>	Unconjugated

### Note

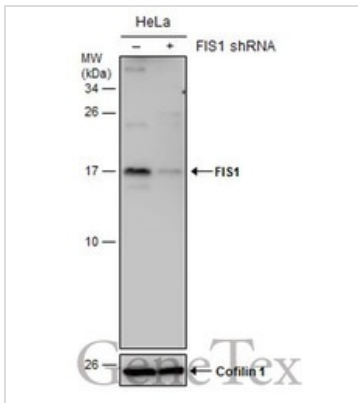
For laboratory research use only. Not for any clinical, therapeutic, or diagnostic use in humans or animals. Not for animal or human consumption.

Purchasers shall not, and agree not to enable third parties to, analyze, copy, reverse engineer or otherwise attempt to determine the structure or sequence of the product.



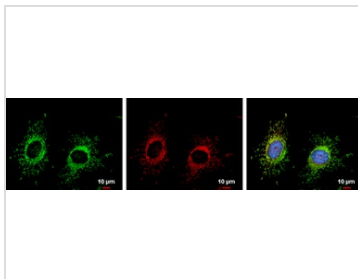
For full product information, images and publications, please visit our [website](#).

## DATA IMAGES



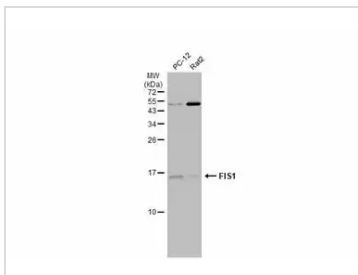
### GTX631209 WB Image

Non-transfected (–) and transfected (+) HeLa whole cell extracts (30 µg) were separated by 15% SDS-PAGE, and the membrane was blotted with FIS1 antibody [GT9810] (GTX631209) diluted at 1:500.



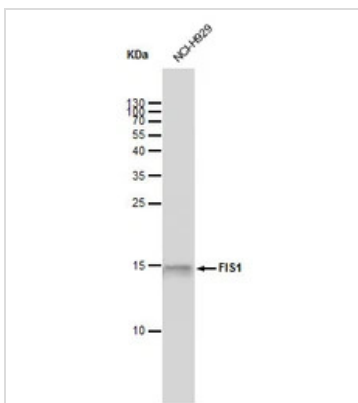
### GTX631209 ICC/IF Image

FIS1 antibody detects FIS1 protein at mitochondria by immunofluorescent analysis.  
Sample: HeLa cells were fixed in 2% paraformaldehyde/culture medium at 37°C for 30 min.  
Green: FIS1 protein stained by FIS1 antibody (GTX631209) diluted at 1:20000.  
Red: MitoTracker Red CMXRos, a mitochondria tracker.  
Blue: Hoechst 33342 staining.  
Scale bar = 10 µm.



### GTX631209 WB Image

Various whole cell extracts (30 µg) were separated by 15% SDS-PAGE, and the membrane was blotted with FIS1 antibody [GT9810] (GTX631209) diluted at 1:500. The HRP-conjugated anti-mouse IgG antibody (GTX213111-01) was used to detect the primary antibody.



### GTX631209 WB Image

FIS1 antibody [GT9810] detects FIS1 protein by western blot analysis. Whole cell extracts (30 µg) was separated by 15 % SDS-PAGE, and blotted with FIS1 antibody [GT9810] (GTX631209) diluted by 1:1000



For full product information, images and publications, please visit our [website](https://www.genetex.com).