

ELP3 antibody [GT11811]

Cat. No. GTX631395

Host	Mouse
Clonality	Monoclonal
Isotype	IgG1
Applications	WB, ICC/IF, IP
Reactivity	Human

Package
100 µl, 25 µl

Applications

Application Note

*Optimal dilutions/concentrations should be determined by the researcher.

Suggested dilution	Recommended dilution
WB	1:500-1:3000
ICC/IF	1:100-1:1000
IP	1:100-1:500

Not tested in other applications.

Calculated MW 62 kDa. ([Note](#))

Properties

Form	Liquid
Buffer	PBS
Preservative	No preservatives
Storage	Store as concentrated solution. Centrifuge briefly prior to opening vial. For short-term storage (1-2 weeks), store at 4°C. For long-term storage, aliquot and store at -20°C or below. Avoid multiple freeze-thaw cycles.
Concentration	2.35 mg/ml (Please refer to the vial label for the specific concentration.)
Immunogen	Recombinant protein encompassing a sequence within the center region of human ELP3. The exact sequence is proprietary.
Purification	Affinity purified by Protein G.
Conjugation	Unconjugated

Note

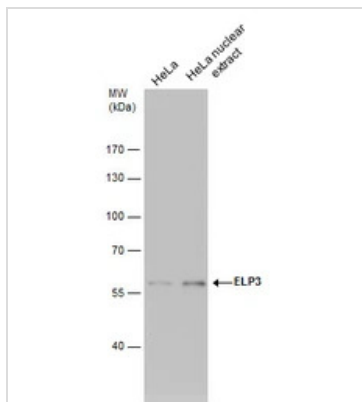
For laboratory research use only. Not for any clinical, therapeutic, or diagnostic use in humans or animals. Not for animal or human consumption.

Purchasers shall not, and agree not to enable third parties to, analyze, copy, reverse engineer or otherwise attempt to determine the structure or sequence of the product.



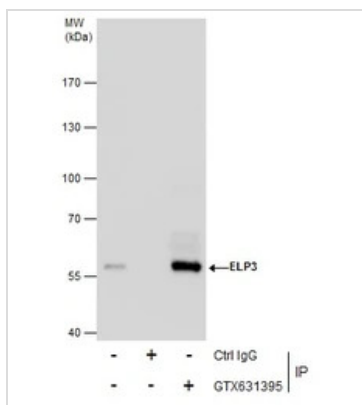
For full product information, images and publications, please visit our [website](#).

DATA IMAGES



GTX631395 WB Image

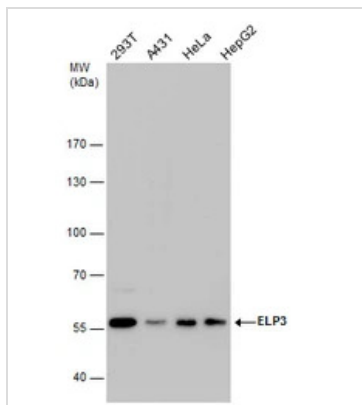
ELP3 antibody detects ELP3 protein by western blot analysis. HeLa whole cell extracts and nuclear extracts (30 µg) were separated by 7.5% SDS-PAGE, and the membrane was blotted with ELP3 antibody (GTX631395) diluted by 1:1000.



GTX631395 IP Image

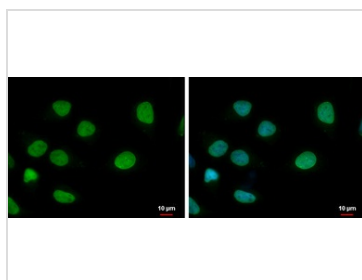
Immunoprecipitation of ELP3 protein from 293T whole cell extracts using 5 µg of ELP3 antibody [GT11811] (GTX631395).

Western blot analysis was performed using ELP3 antibody [GT11811] (GTX631395). EasyBlot anti-Mouse IgG (GTX221667-01) was used as a secondary reagent.



GTX631395 WB Image

ELP3 antibody detects ELP3 protein by western blot analysis. Various whole cell extracts (30 µg) were separated by 7.5% SDS-PAGE, and the membrane was blotted with ELP3 antibody (GTX631395) diluted by 1:500.



GTX631395 ICC/IF Image

ELP3 antibody [GT11811] detects ELP3 protein at nucleus by immunofluorescent analysis.

Sample: HeLa cells were fixed in 4% paraformaldehyde at RT for 15 min.

Green: ELP3 protein stained by ELP3 antibody [GT11811] (GTX631395) diluted at 1:500.

Blue: Hoechst 33342 staining.

Scale bar = 10 µm.



For full product information, images and publications, please visit our [website](#).