

beta Tubulin 3/ Tuj1 antibody [GT1338]

Cat. No. GTX631831

| | |
|--------------|-------------------|
| Host | Mouse |
| Clonality | Monoclonal |
| Isotype | IgG2a |
| Applications | WB, ICC/IF, IHC-P |
| Reactivity | Human, Mouse, Rat |

Package
100 µl, 25 µl

Applications

Application Note

*Optimal dilutions/concentrations should be determined by the researcher.

| Suggested dilution | Recommended dilution |
|--------------------|----------------------|
| WB | 1:500-1:20000 |
| ICC/IF | 1:100-1:1000 |
| IHC-P | 1:100-1:1000 |

Not tested in other applications.

Calculated MW 50 kDa. ([Note](#))

Properties

| | |
|---------------|--|
| Form | Liquid |
| Buffer | PBS |
| Preservative | No preservatives |
| Storage | Store as concentrated solution. Centrifuge briefly prior to opening vial. For short-term storage (1-2 weeks), store at 4°C. For long-term storage, aliquot and store at -20°C or below. Avoid multiple freeze-thaw cycles. |
| Concentration | 1.79 mg/ml (Please refer to the vial label for the specific concentration.) |
| Immunogen | Carrier-protein conjugated synthetic peptide encompassing a sequence within the C-terminus region of human beta Tubulin 3/ Tuj1. The exact sequence is proprietary. |
| Purification | Affinity purified by Protein A. |
| Conjugation | Unconjugated |

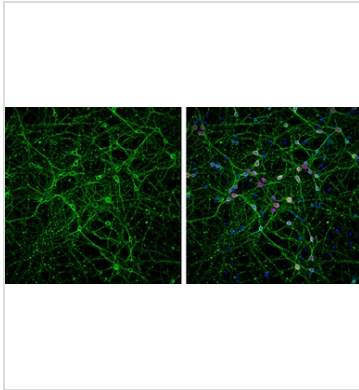
Note

For laboratory research use only. Not for any clinical, therapeutic, or diagnostic use in humans or animals. Not for animal or human consumption.

Purchasers shall not, and agree not to enable third parties to, analyze, copy, reverse engineer or otherwise attempt to determine the structure or sequence of the product.



For full product information, images and publications, please visit our [website](#).

DATA IMAGES

GTX631831 ICC/IF Image

beta Tubulin 3/ Tuj1 antibody [GT1338] detects beta Tubulin 3/ Tuj1 protein at cytoplasm by immunofluorescent analysis.

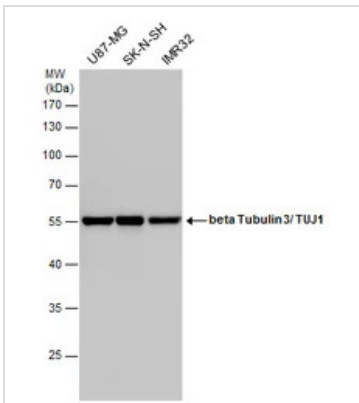
Sample: DIV9 rat E18 primary cortical neurons were fixed in 4% paraformaldehyde at RT for 15 min.

Green: beta Tubulin 3/ Tuj1 protein stained by beta Tubulin 3/ Tuj1 antibody [GT1338] (GTX631831) diluted at 1:500.

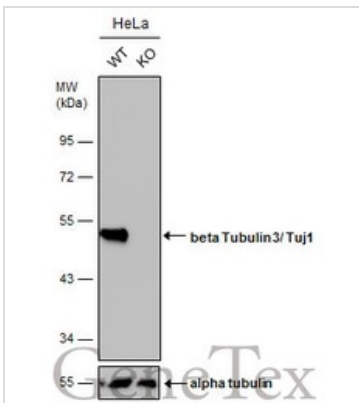
Red: NeuN, stained by NeuN antibody (GTX132974) diluted at 1:1000.

Blue: Fluoroshield with DAPI (GTX30920).

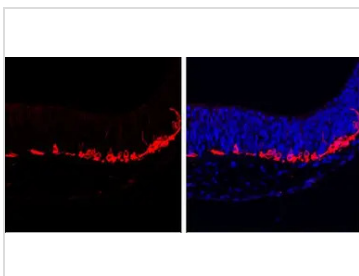
The staining pattern is based on the publication:[PMID: 30390091](https://pubmed.ncbi.nlm.nih.gov/30390091/)


GTX631831 WB Image

beta Tubulin 3/ Tuj1 antibody detects beta Tubulin 3/ Tuj1 protein by Western blot analysis. Various whole cell extracts (30 µg) were separated by 10% SDS-PAGE, and the membrane was blotted with beta Tubulin 3/ Tuj1 antibody (GTX631831) diluted by 1:1000.


GTX631831 WB Image

Wild-type (WT) and beta Tubulin 3/ Tuj1 knockout (KO) HeLa cell extracts (30 µg) were separated by 10% SDS-PAGE, and the membrane was blotted with beta Tubulin 3/ Tuj1 antibody [GT1338] (GTX631831) diluted at 1:5000. The HRP-conjugated anti-mouse IgG antibody (GTX213111-01) was used to detect the primary antibody.


GTX631831 IHC-P Image

beta Tubulin 3/ Tuj1 antibody [GT1338] detects beta Tubulin 3/ Tuj1 protein at cytoplasm by immunohistochemical analysis.

Sample: Paraffin-embedded mouse E10.5 embryo.

Red: beta Tubulin 3/ Tuj1 stained by beta Tubulin 3/ Tuj1 antibody [GT1338] (GTX631831) diluted at 1:500.

Blue: Fluoroshield with DAPI (GTX30920).



For full product information, images and publications, please visit our [website](https://www.genetex.com).