

# beta Tubulin 3/ Tuj1 antibody [GT11710]

**Cat. No. GTX631836**

<b>Host</b>	Mouse
<b>Clonality</b>	Monoclonal
<b>Isotype</b>	IgG2b
<b>Applications</b>	WB, ICC/IF, IHC-P, IHC-Fr, IP
<b>Reactivity</b>	Human, Mouse, Rat, Fish

References ( 34 )

★★★★★ Review ( 2 )

Package

100 µl, 25 µl

## Applications

### Application Note

\*Optimal dilutions/concentrations should be determined by the researcher.

Suggested dilution	Recommended dilution
WB	1:500-1:20000
ICC/IF	1:100-1:1000
IHC-P	1:100-1:1000
IHC-Fr	1:100-1:1000
IP	1:100-1:500

Not tested in other applications.

**Calculated MW** 50 kDa. ( [Note](#) )

**Product Note** beta III Tubulin antibody [GT11710] specifically recognizes endogenous levels of beta III Tubulin based on the immunogen sequence.

## Properties

<b>Form</b>	Liquid
<b>Buffer</b>	PBS
<b>Preservative</b>	No preservative
<b>Storage</b>	Store as concentrated solution. Centrifuge briefly prior to opening vial. For short-term storage (1-2 weeks), store at 4°C. For long-term storage, aliquot and store at -20°C or below. Avoid multiple freeze-thaw cycles.
<b>Concentration</b>	1 mg/ml (Please refer to the vial label for the specific concentration.)
<b>Immunogen</b>	Carrier-protein conjugated synthetic peptide encompassing a sequence within the C-terminus region of human beta Tubulin 3/ Tuj1. The exact sequence is proprietary.
<b>Purification</b>	Affinity purified by Protein A.
<b>Conjugation</b>	Unconjugated



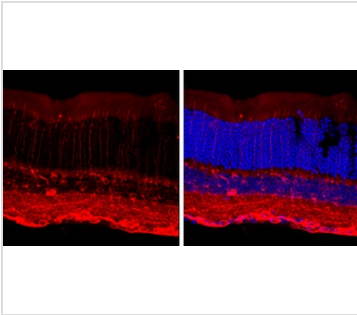
For full product information, images and publications, please visit our [website](#).

Date 2025 / 05 / 06 Page 1 of 2

For laboratory research use only. Not for any clinical, therapeutic, or diagnostic use in humans or animals. Not for animal or human consumption.

**Note**

Purchasers shall not, and agree not to enable third parties to, analyze, copy, reverse engineer or otherwise attempt to determine the structure or sequence of the product.

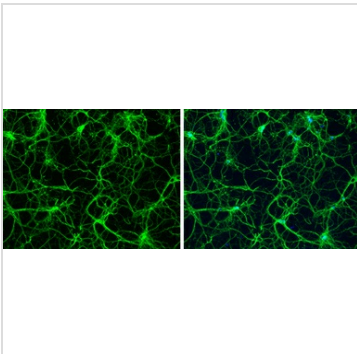
**DATA IMAGES**

**GTX631836 IHC-Fr Image**

beta Tubulin 3/ TUJ1 antibody [GT11710] detects beta Tubulin 3/ TUJ1 protein by immunohistochemical analysis.

Sample: Frozen sectioned adult mouse retina.

Red: beta Tubulin 3/ TUJ1 protein stained by beta Tubulin 3/ TUJ1 antibody [GT11710] (GTX631836) diluted at 1:250.

Blue: Fluoroshield with DAPI (GTX30920).

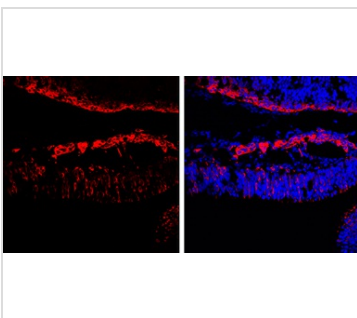

**GTX631836 ICC/IF Image**

beta Tubulin 3/ TUJ1 antibody [GT11710] detects beta Tubulin 3/ TUJ1 protein expression by immunofluorescent analysis.

Sample: Cultured rat E18 primary hippocampal neuron. Cells were fixed in 4% paraformaldehyde at RT for 15 min.

Green: beta Tubulin 3/ TUJ1 protein stained by beta Tubulin 3/ TUJ1 antibody [GT11710] (GTX631836) diluted at 1:250.

Blue: Fluoroshield with DAPI (GTX30920).

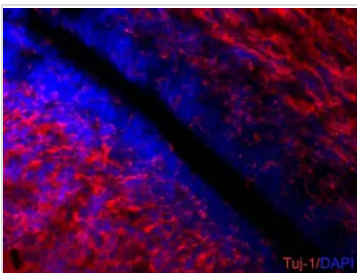

**GTX631836 IHC-Fr Image**

beta Tubulin 3/ TUJ1 antibody [GT11710] detects beta Tubulin 3/ TUJ1 protein by immunohistochemical analysis.

Sample: Frozen sectioned E13.5 rat brain.

Red: beta Tubulin 3/ TUJ1 protein stained by beta Tubulin 3/ TUJ1 antibody [GT11710] (GTX631836) diluted at 1:250.

Blue: Fluoroshield with DAPI (GTX30920).


**GTX631836 IHC-Fr Image**

beta III Tubulin antibody [GT11710] detects beta III Tubulin proteins on embryonic mouse brain by immunohistochemical analysis.

Sample: Frozen section of embryonic mouse brain (mE18.5).

Red: beta III Tubulin antibody [GT11710] (GTX631836) diluted at 1:500.

Blue: DAPI



For full product information, images and publications, please visit our [website](https://www.genetex.com).