

ARID5A antibody [GT18112]

Cat. No. GTX631940

| | |
|-------------|------------------|
| Host | Mouse |
| Clonality | Monoclonal |
| Isotype | IgG2b |
| Application | WB, IHC-Fr, FACS |
| Reactivity | Human, Mouse |

Reference (1)
Package
100 µl, 25 µl

APPLICATION

Application Note

*Optimal dilutions/concentrations should be determined by the researcher.

| Suggested dilution | Recommended dilution |
|--------------------|----------------------|
| WB | 1:500-1:10000 |
| IHC-Fr | 1:100-1:1000 |
| FACS | 1:20-1:200 |

Not tested in other applications.

Calculated MW 64 kDa. ([Note](#))

PROPERTIES

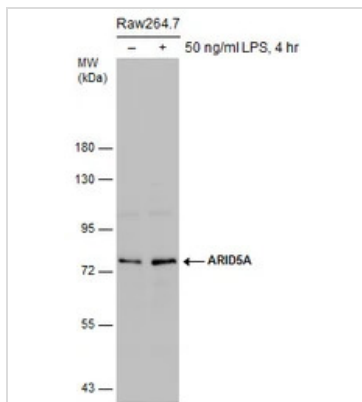
| | |
|---------------|--|
| Form | Liquid |
| Buffer | PBS, 20% Glycerol |
| Preservative | No Preservative |
| Storage | Store as concentrated solution. Centrifuge briefly prior to opening vial. For short-term storage (1-2 weeks), store at 4°C. For long-term storage, aliquot and store at -20°C or below. Avoid multiple freeze-thaw cycles. |
| Concentration | 1 mg/ml (Please refer to the vial label for the specific concentration.) |
| Immunogen | Recombinant protein encompassing a sequence within the center region of human ARID5A. The exact sequence is proprietary. |
| Purification | Affinity purified by Protein A. |
| Conjugation | Unconjugated |

Note For laboratory research use only. Not for any clinical, therapeutic, or diagnostic use in humans or animals. Not for animal or human consumption.

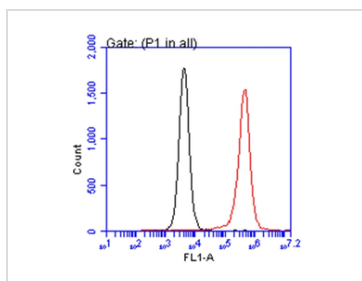
Purchasers shall not, and agree not to enable third parties to, analyze, copy, reverse engineer or otherwise attempt to determine the structure or sequence of the product.



For full product information, images and publications, please visit our [website](#).

DATA IMAGES

GTX631940 WB Image

Untreated (-) and treated (+) Raw264.7 whole cell extracts (30 µg) were separated by 7.5% SDS-PAGE, and the membrane was blotted with ARID5A antibody [GT18112] (GTX631940) diluted at 1:500. The signal was developed with Trident ECL plus-Enhanced. (LPS: Lipopolysaccharides)


GTX631940 FACS Image

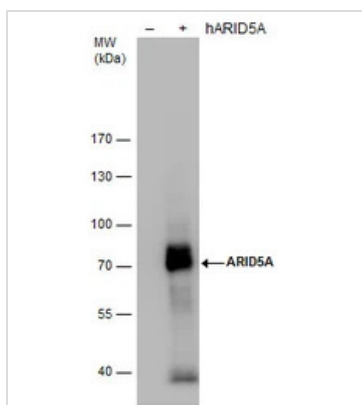
ARID5A antibody [GT18112] (GTX631940) detects ARID5A protein by flow cytometry analysis.

Sample: THP-1 cell.

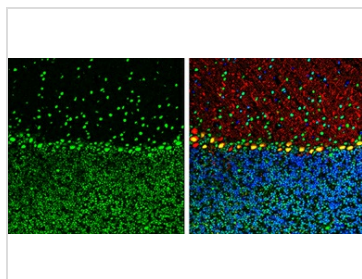
Black: Unlabelled sample was used as a control.

Red: ARID5A antibody [GT18112] (GTX631940) dilution: 1:20.

Acquisition of 20,000 events were collected for FACS analysis.


GTX631940 WB Image

ARID5A antibody detects ARID5A protein by western blot analysis. Non-transfected (-) and ARID5A-transfected (+, including 3xFlag-tag) 293T whole cell extracts (30 µg) were separated by 7.5% SDS-PAGE, and the membrane was blotted with ARID5A antibody (GTX631940) diluted by 1:5000.


GTX631940 IHC-Fr Image

ARID5A antibody [GT18112] detects ARID5A protein by immunohistochemical analysis.

Sample: Frozen-sectioned mouse cerebellum.

Green: ARID5A stained by ARID5A antibody [GT18112] (GTX631940) diluted at 1:250.

Red: Calbindin, stained by Calbindin antibody (GTX130856) diluted at 1:500.

Blue: Fluoroshield with DAPI (GTX30920).

Antigen Retrieval: Citrate buffer, pH 6.0, 10 min



For full product information, images and publications, please visit our [website](https://www.genetex.com).