

C-Peptide antibody [GT1519]

Cat. No. GTX631943

Host	Mouse
Clonality	Monoclonal
Isotype	IgG2b
Applications	ELISA, Sandwich ELISA
Reactivity	Human

Package
100 µl, 25 µl

Applications

Application Note

*Optimal dilutions/concentrations should be determined by the researcher.

Suggested dilution	Recommended dilution
ELISA	1:1000-1:10000
Sandwich ELISA	Assay dependent

Note : Capture: GTX636462 / GTX636463, Detection: GTX631943

Not tested in other applications.

Properties

Form	Liquid
Buffer	PBS
Preservative	No preservatives
Storage	Store as concentrated solution. Centrifuge briefly prior to opening vial. For short-term storage (1-2 weeks), store at 4°C. For long-term storage, aliquot and store at -20°C or below. Avoid multiple freeze-thaw cycles.
Concentration	1.62 mg/ml (Please refer to the vial label for the specific concentration.)
Immunogen	Carrier-protein conjugated synthetic peptide encompassing a sequence within the center region of human C-Peptide. The exact sequence is proprietary.
Purification	Affinity purified by Protein A.
Conjugation	Unconjugated

Note

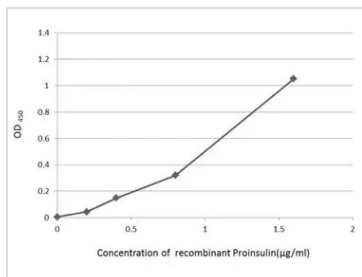
For laboratory research use only. Not for any clinical, therapeutic, or diagnostic use in humans or animals. Not for animal or human consumption.

Purchasers shall not, and agree not to enable third parties to, analyze, copy, reverse engineer or otherwise attempt to determine the structure or sequence of the product.



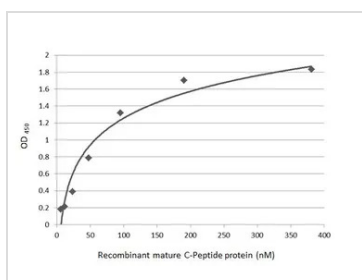
For full product information, images and publications, please visit our [website](#).

DATA IMAGES



GTX631943 ELISA Image

An ELISA plate is coated with 50 µL of a Proinsulin recombinant protein at concentration ranged from 0.2 µg/mL to 1.6 µg/mL. The coated protein is detected with anti-C-peptide antibody [GT1519] (GTX631943) at 500 ng/mL.

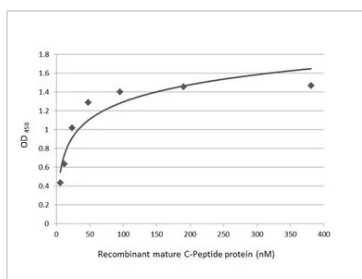


GTX631943 ELISA Image

Sandwich ELISA detection of recombinant E. coli expressed, mature C-Peptide protein using antibodies as below.

Capture: C-Peptide antibody [HL1158] (GTX636462) (5 µg/mL)

Detection: C-Peptide antibody [GT1519] (GTX631943) (1 µg/mL)



GTX631943 ELISA Image

Sandwich ELISA detection of recombinant E. coli expressed, mature C-Peptide protein using antibodies as below.

Capture: C-Peptide antibody [HL1159] (GTX636463) (5 µg/mL)

Detection: C-Peptide antibody [GT1519] (GTX631943) (1 µg/mL)



For full product information, images and publications, please visit our [website](#).