

ARID1A antibody [GT3611]

Cat. No. GTX632013

Host	Mouse
Clonality	Monoclonal
Isotype	IgG1
Applications	WB, ICC/IF, IHC-P
Reactivity	Human, Mouse

Package
100 µl, 25 µl

Applications

Application Note

*Optimal dilutions/concentrations should be determined by the researcher.

Suggested dilution	Recommended dilution
WB	1:500-1:3000
ICC/IF	1:100-1:1000
IHC-P	1:100-1:1000

Not tested in other applications.

Calculated MW 242 kDa. ([Note](#))

Properties

Form	Liquid
Buffer	PBS
Preservative	No preservatives
Storage	Store as concentrated solution. Centrifuge briefly prior to opening vial. For short-term storage (1-2 weeks), store at 4°C. For long-term storage, aliquot and store at -20°C or below. Avoid multiple freeze-thaw cycles.
Concentration	2.61 mg/ml (Please refer to the vial label for the specific concentration.)
Immunogen	Recombinant protein encompassing a sequence within the C-terminus region of human ARID1A. The exact sequence is proprietary.
Purification	Affinity purified by Protein G.
Conjugation	Unconjugated

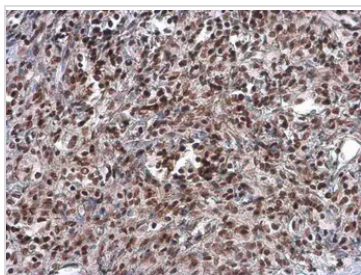
Note

For laboratory research use only. Not for any clinical, therapeutic, or diagnostic use in humans or animals. Not for animal or human consumption.

Purchasers shall not, and agree not to enable third parties to, analyze, copy, reverse engineer or otherwise attempt to determine the structure or sequence of the product.



For full product information, images and publications, please visit our [website](#).

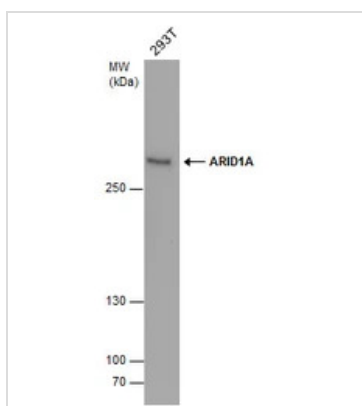
DATA IMAGES

GTX632013 IHC-P Image

ARID1A antibody [GT3611] detects ARID1A protein at nucleus by immunohistochemical analysis.

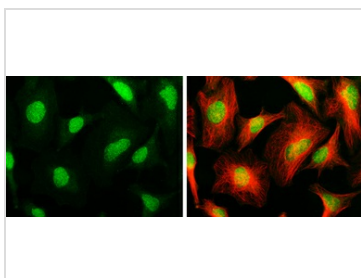
Sample: Paraffin-embedded human lung cancer.

ARID1A stained by ARID1A antibody [GT3611] (GTX632013) diluted at 1:200.

Antigen Retrieval: Citrate buffer, pH 6.0, 15 min


GTX632013 WB Image

ARID1A antibody [GT3611] detects ARID1A protein by western blot analysis. Whole cell extracts (30 µg) was separated by 5% SDS-PAGE, and the membrane was blotted with ARID1A antibody [GT3611] (GTX632013) at a dilution of 1:500.


GTX632013 ICC/IF Image

ARID1A antibody [GT3611] detects ARID1A protein at nucleus by immunofluorescent analysis.

Sample: HeLa cells were fixed in ice-cold MeOH for 5 min.

Green: ARID1A stained by ARID1A antibody [GT3611] (GTX632013) diluted at 1:200.

Red: alpha Tubulin 4a, a cytoskeleton marker, stained by alpha Tubulin 4a antibody (GTX112141) diluted at 1:500.


GTX632013 IHC-P Image

ARID1A antibody [GT3611] detects ARID1A protein at nucleus by immunohistochemical analysis.

Sample: Paraffin-embedded mouse colon.

ARID1A stained by ARID1A antibody [GT3611] (GTX632013) diluted at 1:200.

Antigen Retrieval: Citrate buffer, pH 6.0, 15 min



For full product information, images and publications, please visit our [website](https://www.genetex.com).