

## HIF2 alpha antibody [GT125]

Cat. No. GTX632015

Host	Mouse
Clonality	Monoclonal
Isotype	IgG1
Applications	WB, ICC/IF, IP
Reactivity	Human, Mouse, Rat

References ( 3 )

★★★★★ Review ( 1 )

Package

100 µl, 25 µl

## Applications

## Application Note

\*Optimal dilutions/concentrations should be determined by the researcher.

Suggested dilution	Recommended dilution
WB	1:500-1:3000
ICC/IF	1:100-1:1000
IP	1:100-1:700

Not tested in other applications.

Calculated MW 96 kDa. ( [Note](#) )

## Properties

Form	Liquid
Buffer	PBS, 20% Glycerol
Preservative	No Preservative
Storage	Store as concentrated solution. Centrifuge briefly prior to opening vial. For short-term storage (1-2 weeks), store at 4°C. For long-term storage, aliquot and store at -20°C or below. Avoid multiple freeze-thaw cycles.
Concentration	1 mg/ml (Please refer to the vial label for the specific concentration.)
Immunogen	Recombinant protein encompassing a sequence within the center region of human HIF2 alpha. The exact sequence is proprietary.
Purification	Affinity purified by Protein G.
Conjugation	Unconjugated

## Note

For laboratory research use only. Not for any clinical, therapeutic, or diagnostic use in humans or animals. Not for animal or human consumption.

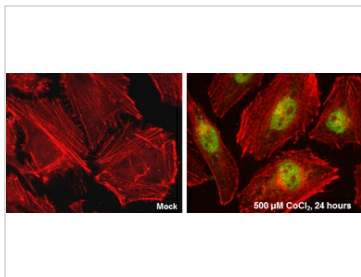
Purchasers shall not, and agree not to enable third parties to, analyze, copy, reverse engineer or otherwise attempt to determine the structure or sequence of the product.



For full product information, images and publications, please visit our [website](#).

Date 2025 / 04 / 26 Page 1 of 2

## DATA IMAGES



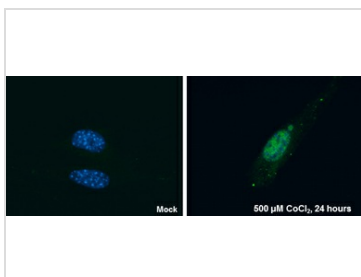
### GTx632015 ICC/IF Image

HIF2 alpha antibody [GT125] detects HIF2 alpha protein at nucleus by immunofluorescent analysis.

Sample: HeLa cells were fixed in 4% paraformaldehyde at RT for 15 min.

Green: HIF2 alpha protein stained by HIF2 alpha antibody [GT125] (GTx632015) diluted at 1:100.

Red: Actin filaments were labeled with Phalloidin.



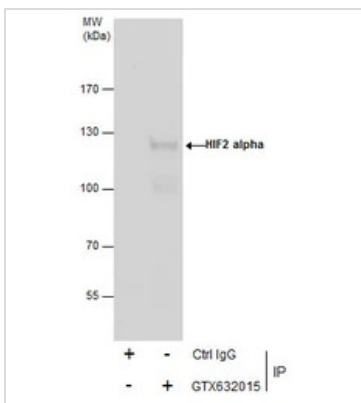
### GTx632015 ICC/IF Image

HIF2 alpha antibody [GT125] detects HIF2 alpha protein at nucleus by immunofluorescent analysis.

Sample: NIH/3T3 cells were fixed in 4% paraformaldehyde at RT for 15 min.

Green: HIF2 alpha protein stained by HIF2 alpha antibody [GT125] (GTx632015) diluted at 1:100.

Blue: Hoechst 33342 staining.

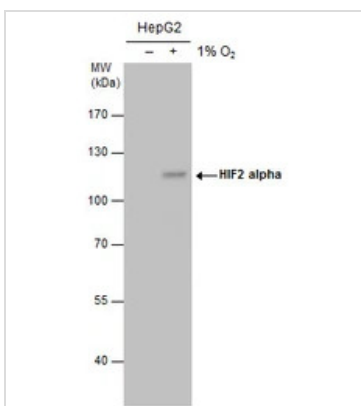


### GTx632015 IP Image

Immunoprecipitation of HIF2 alpha protein from HepG2 whole cell extracts treated with 500 μM CoCl2 for 24 hr using 5 μg of HIF2 alpha antibody [GT125] (GTx632015).

Western blot analysis was performed using HIF2 alpha antibody [GT125] (GTx632015) diluted at 1:500.

EasyBlot anti-Mouse IgG (GTx221667-01) was used as a secondary reagent.



### GTx632015 WB Image

HIF2 alpha antibody detects HIF2 alpha protein by western blot analysis. Un-treated (-) and treated (+, 1% O2 treatment for 24hr) HepG2 whole cell extracts (30 μg) were separated by 7.5% SDS-PAGE, and the membrane was blotted with HIF2 alpha antibody (GTx632015) at a dilution of 1:500. The HRP-conjugated anti-mouse IgG antibody (GTx213111-01) was used to detect the primary antibody.



For full product information, images and publications, please visit our [website](https://www.genetex.com).