

C9orf72 antibody [GT779]

Cat. No. GTX632041

Host	Mouse
Clonality	Monoclonal
Isotype	IgG1
Applications	WB, ICC/IF, IHC-P, IP
Reactivity	Human, Mouse, Rat

References (21)

★★★★☆ Review (6)

Package

100 µl, 25 µl

Applications

Application Note

*Optimal dilutions/concentrations should be determined by the researcher.

Suggested dilution	Recommended dilution
WB	1:500-1:3000
ICC/IF	1:100-1:1000
IHC-P	1:100-1:1000
IP	1:100-1:500

Not tested in other applications.

Observed MW (kDa) 54 kDa.**Product Note** Knockdown/Knockout validation was supported by customer review data

Properties

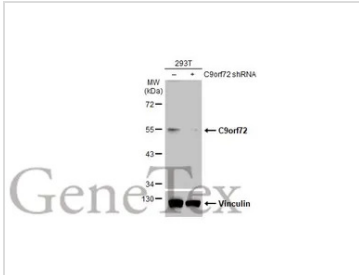
Form	Liquid
Buffer	PBS, 20% Glycerol
Preservative	No preservatives
Storage	Store as concentrated solution. Centrifuge briefly prior to opening vial. For short-term storage (1-2 weeks), store at 4°C. For long-term storage, aliquot and store at -20°C or below. Avoid multiple freeze-thaw cycles.
Concentration	1 mg/ml (Please refer to the vial label for the specific concentration.)
Immunogen	Recombinant protein encompassing a sequence within the N-terminus region of human C9orf72. The exact sequence is proprietary.
Purification	Affinity purified by Protein G.
Conjugation	Unconjugated

For full product information, images and publications, please visit our [website](#).

For laboratory research use only. Not for any clinical, therapeutic, or diagnostic use in humans or animals. Not for animal or human consumption.

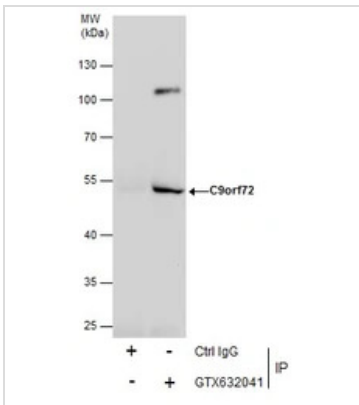
Note
 Purchasers shall not, and agree not to enable third parties to, analyze, copy, reverse engineer or otherwise attempt to determine the structure or sequence of the product.

DATA IMAGES



GTX632041 WB Image

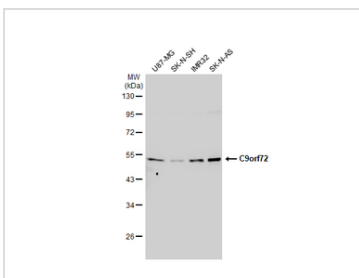
Non-transfected (-) and transfected (+) 293T whole cell extracts (60 µg) were separated by 10% SDS-PAGE, and the membrane was blotted with C9orf72 antibody [GT779] (GTX632041) diluted at 1:500. The HRP-conjugated anti-mouse IgG antibody (GTX213111-01) was used to detect the primary antibody.



GTX632041 IP Image

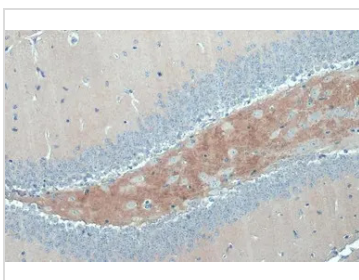
Immunoprecipitation of C9orf72 protein from SK-N-SH whole cell extracts using 5 µg of C9orf72 antibody [GT779] (GTX632041).

Western blot analysis was performed using C9orf72 antibody [GT779] (GTX632041). EasyBlot anti-Mouse IgG (GTX221667-01) was used as a secondary reagent.



GTX632041 WB Image

Various whole cell extracts (30 µg) were separated by 10% SDS-PAGE, and the membrane was blotted with C9orf72 antibody [GT779] (GTX632041) diluted at 1:1000. The HRP-conjugated anti-mouse IgG antibody (GTX213111-01) was used to detect the primary antibody.



GTX632041 IHC-P Image

C9orf72 antibody [GT779] detects C9orf72 protein at cytoplasm by immunohistochemical analysis.

Sample: Paraffin-embedded mouse brain.

C9orf72 stained by C9orf72 antibody [GT779] (GTX632041) diluted at 1:200.

Antigen Retrieval: Citrate buffer, pH 6.0, 15 min



For full product information, images and publications, please visit our [website](#).