

Histone H4K16ac (Acetyl Lys16) antibody [GT1271]

Cat. No. GTX632067

| | |
|--------------------|-------------------|
| Host | Mouse |
| Clonality | Monoclonal |
| Isotype | IgG2a |
| Application | WB, ICC/IF, IHC-P |
| Reactivity | Human, Mouse, Rat |

Package
100 µl, 25 µl

APPLICATION

Application Note

*Optimal dilutions/concentrations should be determined by the researcher.

| Suggested dilution | Recommended dilution |
|--------------------|----------------------|
| WB | 1:500-1:3000 |
| ICC/IF | 1:100-1:1000 |
| IHC-P | 1:100-1:1000 |

Not tested in other applications.

PROPERTIES

| | |
|----------------------|--|
| Form | Liquid |
| Buffer | PBS |
| Preservative | No preservative |
| Storage | Store as concentrated solution. Centrifuge briefly prior to opening vial. For short-term storage (1-2 weeks), store at 4°C. For long-term storage, aliquot and store at -20°C or below. Avoid multiple freeze-thaw cycles. |
| Concentration | 1 mg/ml (Please refer to the vial label for the specific concentration.) |
| Immunogen | Carrier-protein conjugated synthetic peptide surrounding acetyl Lys16 of human Histone H4. The exact sequence is proprietary. |
| Purification | Affinity purified by Protein A. |
| Conjugation | Unconjugated |

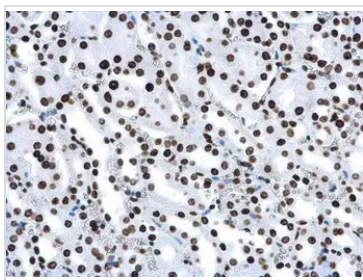
Note

For laboratory research use only. Not for any clinical, therapeutic, or diagnostic use in humans or animals. Not for animal or human consumption.

Purchasers shall not, and agree not to enable third parties to, analyze, copy, reverse engineer or otherwise attempt to determine the structure or sequence of the product.



For full product information, images and publications, please visit our [website](https://www.genetex.com).

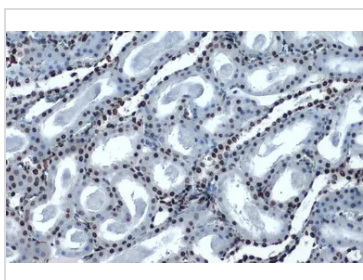
DATA IMAGES

GTX632067 IHC-P Image

Histone H4 (acetyl Lys16) antibody [GT1271] detects Histone H4 (acetyl Lys16) protein at nucleus in mouse kidney by immunohistochemical analysis.

Sample: Paraffin-embedded mouse kidney.

Histone H4 (acetyl Lys16) antibody [GT1271] (GTX632067) diluted at 1:500.

Antigen Retrieval: Citrate buffer, pH 6.0, 15 min

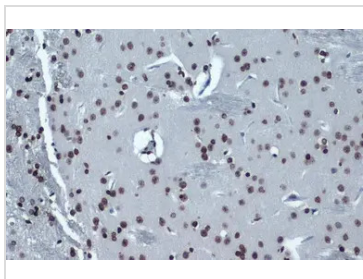

GTX632067 IHC-P Image

Histone H4K16ac (Acetyl Lys16) antibody [GT1271] detects Histone H4K16ac (Acetyl Lys16) protein at nucleus by immunohistochemical analysis.

Sample: Paraffin-embedded rat kidney.

Histone H4K16ac (Acetyl Lys16) stained by Histone H4K16ac (Acetyl Lys16) antibody [GT1271] (GTX632067) diluted at 1:500.

Antigen Retrieval: Citrate buffer, pH 6.0, 15 min

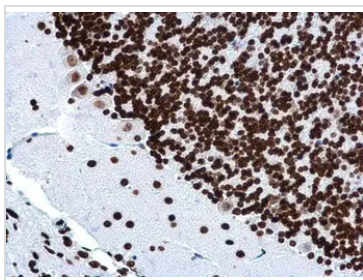

GTX632067 IHC-P Image

Histone H4K16ac (Acetyl Lys16) antibody [GT1271] detects Histone H4K16ac (Acetyl Lys16) protein at nucleus by immunohistochemical analysis.

Sample: Paraffin-embedded rat brain.

Histone H4K16ac (Acetyl Lys16) stained by Histone H4K16ac (Acetyl Lys16) antibody [GT1271] (GTX632067) diluted at 1:500.

Antigen Retrieval: Citrate buffer, pH 6.0, 15 min


GTX632067 IHC-P Image

Histone H4 (acetyl Lys16) antibody [GT1271] detects Histone H4 (acetyl Lys16) protein at nucleus in mouse brain by immunohistochemical analysis.

Sample: Paraffin-embedded mouse brain.

Histone H4 (acetyl Lys16) antibody [GT1271] (GTX632067) diluted at 1:500.

Antigen Retrieval: Citrate buffer, pH 6.0, 15 min



For full product information, images and publications, please visit our [website](#).