

SNX27 antibody [1C6]

Cat. No. GTX632193

Host	Mouse
Clonality	Monoclonal
Isotype	IgG1
Applications	WB, ICC/IF
Reactivity	Human, Monkey

Package
100 µl, 25 µl

Applications

Application Note

*Optimal dilutions/concentrations should be determined by the researcher.

Suggested dilution	Recommended dilution
WB	1:500-1:3000
ICC/IF	1:100-1:1000

Not tested in other applications.

Calculated MW 61 kDa. ([Note](#))

Properties

Form	Liquid
Buffer	PBS
Preservative	No preservatives
Storage	Store as concentrated solution. Centrifuge briefly prior to opening vial. For short-term storage (1-2 weeks), store at 4°C. For long-term storage, aliquot and store at -20°C or below. Avoid multiple freeze-thaw cycles.
Concentration	1.37 mg/ml (Please refer to the vial label for the specific concentration.)
Immunogen	The immunogen used to generate this antibody corresponds to human SNX27
Purification	Affinity purified by Protein G.
Conjugation	Unconjugated

Note

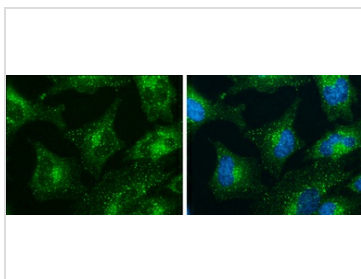
For laboratory research use only. Not for any clinical, therapeutic, or diagnostic use in humans or animals. Not for animal or human consumption.

Purchasers shall not, and agree not to enable third parties to, analyze, copy, reverse engineer or otherwise attempt to determine the structure or sequence of the product.



For full product information, images and publications, please visit our [website](#).

DATA IMAGES

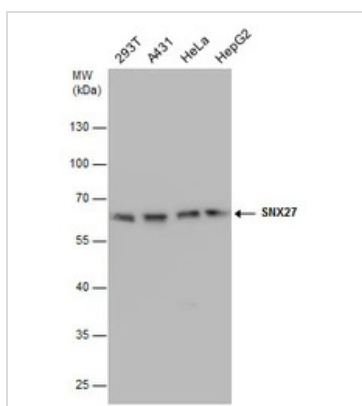
**GTX632193 ICC/IF Image**

SNX27 antibody [1C6] detects SNX27 protein at cytoplasm by immunofluorescent analysis.

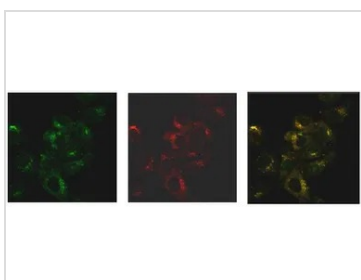
Sample: HeLa cells were fixed in 4% paraformaldehyde at RT for 15 min.

Green: SNX27 stained by SNX27 antibody [1C6] (GTX632193) diluted at 1:200.

Blue: Hoechst 33342 staining.

**GTX632193 WB Image**

SNX27 antibody detects SNX27 protein by western blot analysis. Various whole cell extracts (30 µg) were separated by 10% SDS-PAGE, and the membrane was blotted with SNX27 antibody (GTX632193) diluted at a dilution of 1:500.

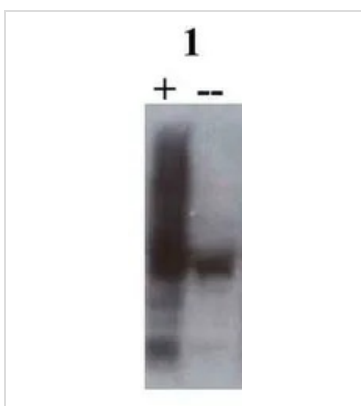
**GTX632193 ICC/IF Image**

ICC/IF analysis of cos7 cells using GTX632193 SNX27 antibody [1C6].

Red : Primary antibody

Green : Polyclonal SNX27 antibody

Yellow : Merged color of red and green

**GTX632193 WB Image**

WB analysis of cos7 cell transfected with SNX27 using GTX632193 SNX27 antibody [1C6].

+ : Transfected

-- : Endogenous



For full product information, images and publications, please visit our [website](#).