

VAMP5 antibody [3E5]

Cat. No. GTX632270

Host	Mouse
Clonality	Monoclonal
Isotype	IgG2a
Applications	WB, ICC/IF
Reactivity	Human

Package
100 µl, 25 µl

Applications

Application Note

*Optimal dilutions/concentrations should be determined by the researcher.

Suggested dilution	Recommended dilution
WB	1:1000-1:10000
ICC/IF	Assay dependent

Not tested in other applications.

Calculated MW 13 kDa. ([Note](#))

Properties

Form	Liquid
Buffer	PBS, 20% Glycerol
Preservative	No preservatives
Storage	Store as concentrated solution. Centrifuge briefly prior to opening vial. For short-term storage (1-2 weeks), store at 4°C. For long-term storage, aliquot and store at -20°C or below. Avoid multiple freeze-thaw cycles.
Concentration	1 mg/ml (Please refer to the vial label for the specific concentration.)
Immunogen	The immunogen used to generate this antibody corresponds to human VAMP5.
Purification	Affinity purified by Protein A.
Conjugation	Unconjugated

Note

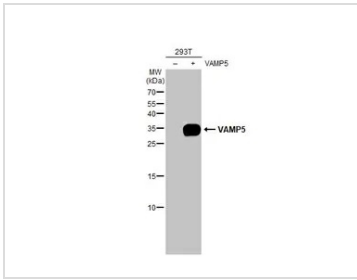
For laboratory research use only. Not for any clinical, therapeutic, or diagnostic use in humans or animals. Not for animal or human consumption.

Purchasers shall not, and agree not to enable third parties to, analyze, copy, reverse engineer or otherwise attempt to determine the structure or sequence of the product.

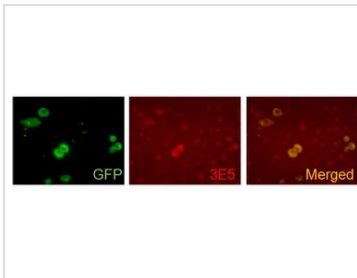


For full product information, images and publications, please visit our [website](#).

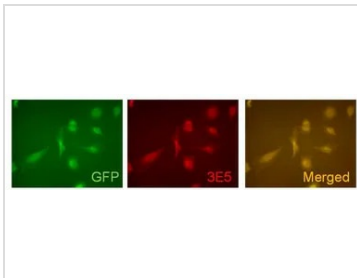
DATA IMAGES

**GTX632270 WB Image**

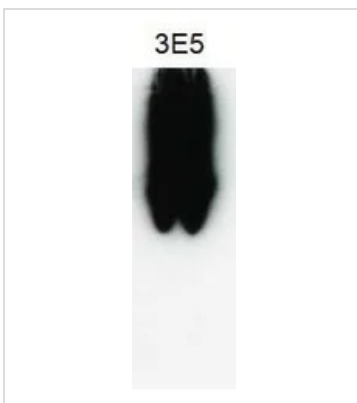
Non-transfected (-) and transfected (+) 293T whole cell extracts (30 µg) were separated by 15% SDS-PAGE, and the membrane was blotted with VAMP5 antibody [3E5] (GTX632270) diluted at 1:5000. The HRP-conjugated anti-mouse IgG antibody (GTX213111-01) was used to detect the primary antibody.

**GTX632270 ICC/IF Image**

ICC/IF analysis of transfected NRK cells (V5V4-GFP) using GTX632270 VAMP5 antibody [3E5].
Red : Primary antibody

**GTX632270 ICC/IF Image**

ICC/IF analysis of pLEGFP-C1-hV5p transfected HeLa cells using GTX632270 VAMP5 antibody [3E5].
Red : Primary antibody

**GTX632270 WB Image**

WB analysis of Vamp5-GST protein using GTX632270 VAMP5 antibody [3E5].



For full product information, images and publications, please visit our [website](#).