

## Glutaminase C (GAC) antibody [GT3211]

Cat. No. GTX632317

Host	Mouse
Clonality	Monoclonal
Isotype	IgG1
Applications	WB, ICC/IF, IHC-P
Reactivity	Human, Mouse

Package  
100 µl, 25 µl

## Applications

## Application Note

\*Optimal dilutions/concentrations should be determined by the researcher.

Suggested dilution	Recommended dilution
WB	1:500-1:3000
ICC/IF	1:100-1:1000
IHC-P	1:100-1:1000

Not tested in other applications.

Calculated MW	65 kDa. ( <a href="#">Note</a> )
Product Note	Specific for GAC but not KGA isoform

## Properties

Form	Liquid
Buffer	PBS
Preservative	No preservatives
Storage	Store as concentrated solution. Centrifuge briefly prior to opening vial. For short-term storage (1-2 weeks), store at 4°C. For long-term storage, aliquot and store at -20°C or below. Avoid multiple freeze-thaw cycles.
Concentration	1 mg/ml (Please refer to the vial label for the specific concentration.)
Immunogen	Carrier-protein conjugated synthetic peptide encompassing a sequence within the C-terminus region of human Glutaminase C (GAC). The exact sequence is proprietary.
Purification	Affinity purified by Protein G.
Conjugation	Unconjugated



For full product information, images and publications, please visit our [website](#).

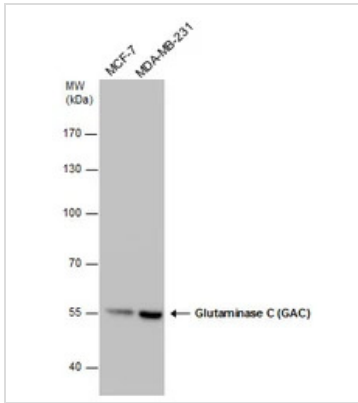
Date 2026 / 01 / 19 Page 1 of 2

For laboratory research use only. Not for any clinical, therapeutic, or diagnostic use in humans or animals. Not for animal or human consumption.

## Note

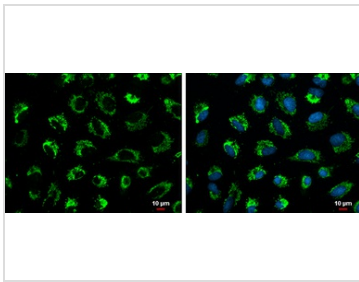
Purchasers shall not, and agree not to enable third parties to, analyze, copy, reverse engineer or otherwise attempt to determine the structure or sequence of the product.

## DATA IMAGES



### GTX632317 WB Image

Glutaminase C (GAC) antibody [GT3211] detects Glutaminase C (GAC) protein by western blot analysis. Various whole cell extracts (30 µg) were separated by 7.5% SDS-PAGE, and the membrane was blotted with Glutaminase C (GAC) antibody [GT3211] (GTX632317) diluted at a dilution of 1:1000.



### GTX632317 ICC/IF Image

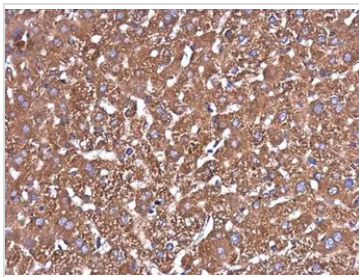
Glutaminase C antibody [GT3211] detects Glutaminase C protein at mitochondria by immunofluorescent analysis.

Sample: A549 cells were fixed in 4% paraformaldehyde at RT for 15 min.

Green: Glutaminase C protein stained by Glutaminase C antibody [GT3211] (GTX632317) diluted at 1:200.

Blue: Hoechst 33342 staining.

Scale bar = 10 µm.



### GTX632317 IHC-P Image

Glutaminase C antibody [GT3211] detects Glutaminase C protein at cytoplasm in mouse liver by immunohistochemical analysis.

Sample: Paraffin-embedded mouse liver.

Glutaminase C antibody [GT3211] (GTX632317) diluted at 1:250.

Antigen Retrieval: Citrate buffer, pH 6.0, 15 min



For full product information, images and publications, please visit our [website](https://www.genetex.com).