

IL10 antibody [GT5111]

Cat. No. GTX632359

| | |
|---------------------|-------------------|
| Host | Mouse |
| Clonality | Monoclonal |
| Isotype | IgG1 |
| Applications | WB, IHC-P, IHC-Fr |
| Reactivity | Human, Mouse, Rat |

References (7)

★★★★★ Review (1)

Package

100 µl, 25 µl

Applications

Application Note

*Optimal dilutions/concentrations should be determined by the researcher.

| Suggested dilution | Recommended dilution |
|--------------------|----------------------|
| WB | 1:1000-1:10000 |
| IHC-P | 1:100-1:1000 |
| IHC-Fr | Assay dependent |

Not tested in other applications.

Calculated MW 21 kDa. ([Note](#))

Properties

| | |
|----------------------|--|
| Form | Liquid |
| Buffer | PBS |
| Preservative | No preservatives |
| Storage | Store as concentrated solution. Centrifuge briefly prior to opening vial. For short-term storage (1-2 weeks), store at 4°C. For long-term storage, aliquot and store at -20°C or below. Avoid multiple freeze-thaw cycles. |
| Concentration | 1.19 mg/ml (Please refer to the vial label for the specific concentration.) |
| Immunogen | Recombinant protein encompassing a sequence within the center region of human IL10. The exact sequence is proprietary. |
| Purification | Affinity purified by Protein G. |
| Conjugation | Unconjugated |

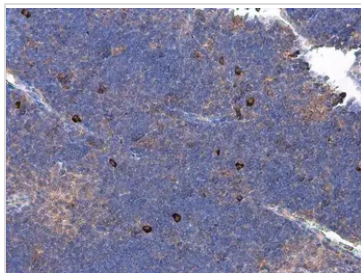
Note

For laboratory research use only. Not for any clinical, therapeutic, or diagnostic use in humans or animals. Not for animal or human consumption.

Purchasers shall not, and agree not to enable third parties to, analyze, copy, reverse engineer or otherwise attempt to determine the structure or sequence of the product.

For full product information, images and publications, please visit our [website](#).

DATA IMAGES



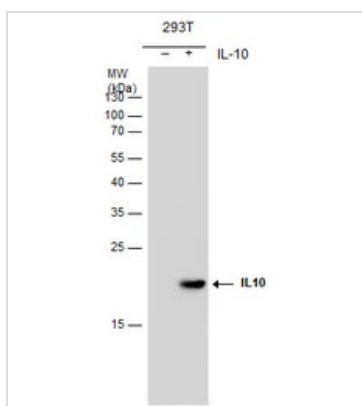
GTX632359 IHC-P Image

IL10 antibody [GT5111] detects IL10 protein in mouse thymus gland by immunohistochemical analysis.

Sample: Paraffin-embedded mouse thymus gland.

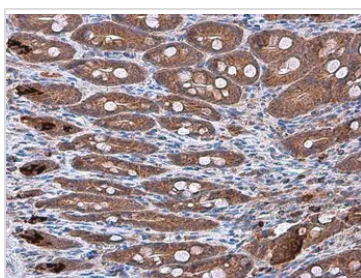
IL10 antibody [GT5111] (GTX632359) diluted at 1:200.

Antigen Retrieval: Citrate buffer, pH 6.0, 15 min



GTX632359 WB Image

IL10 antibody [GT5111] detects IL10 protein by western blot analysis. Non-transfected (-) and IL-10-transfected (+, including 3x Flag-tag) 293T whole cell extracts (30 µg) were separated by 12% SDS-PAGE, and the membrane was blotted with IL10 antibody [GT5111] (GTX632359) at a dilution of 1:5000.



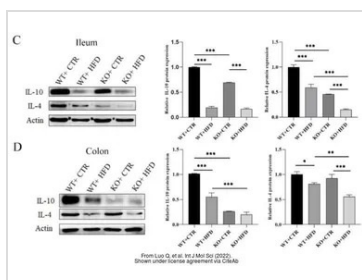
GTX632359 IHC-P Image

IL10 antibody [GT5111] detects IL10 protein in rat duodenum by immunohistochemical analysis.

Sample: Paraffin-embedded rat duodenum.

IL10 antibody [GT5111] (GTX632359) diluted at 1:200.

Antigen Retrieval: Citrate buffer, pH 6.0, 15 min



GTX632359 WB Image

The data was published in the 2022 in Int J Mol Sci. [PMID: 35887011](https://pubmed.ncbi.nlm.nih.gov/35887011/)



For full product information, images and publications, please visit our [website](https://www.genetex.com).