

## alpha Actinin 2 antibody [GT1253]

Cat. No. GTX632361

Host	Mouse
Clonality	Monoclonal
Isotype	IgG1
Applications	WB, IHC-P
Reactivity	Human, Mouse

References ( 1 )

Package

100 µl, 25 µl

## Applications

## Application Note

\*Optimal dilutions/concentrations should be determined by the researcher.

Suggested dilution	Recommended dilution
WB	1:500-1:3000
IHC-P	1:100-1:1000

Not tested in other applications.

Calculated MW	104 kDa. ( <a href="#">Note</a> )
Product Note	Based on sequence homology, this antibody may cross react with ACTN1 protein.

## Properties

Form	Liquid
Buffer	PBS, 20% Glycerol
Preservative	No preservatives
Storage	Store as concentrated solution. Centrifuge briefly prior to opening vial. For short-term storage (1-2 weeks), store at 4°C. For long-term storage, aliquot and store at -20°C or below. Avoid multiple freeze-thaw cycles.
Concentration	1 mg/ml (Please refer to the vial label for the specific concentration.)
Immunogen	Recombinant protein encompassing a sequence within the center region of human alpha Actinin 2. The exact sequence is proprietary.
Purification	Affinity purified by Protein G.
Conjugation	Unconjugated

## Note

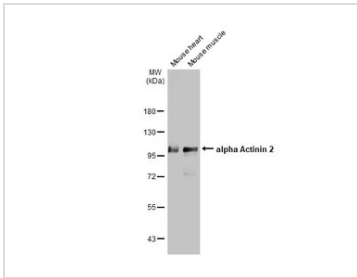
For laboratory research use only. Not for any clinical, therapeutic, or diagnostic use in humans or animals. Not for animal or human consumption.

Purchasers shall not, and agree not to enable third parties to, analyze, copy, reverse engineer or otherwise attempt to determine the structure or sequence of the product.



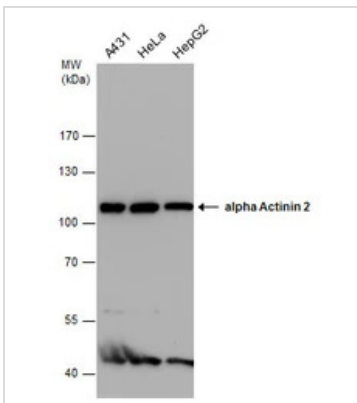
For full product information, images and publications, please visit our [website](#).

## DATA IMAGES



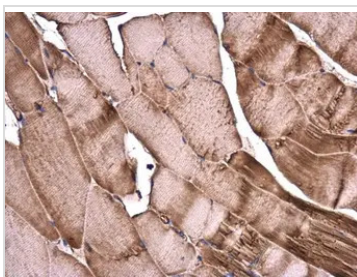
### GTX632361 WB Image

Mouse tissue extract (50 µg) were separated by 7.5% SDS-PAGE, and the membrane was blotted with alpha Actinin 2 antibody [GT1253] (GTX632361) diluted at 1:1000. The HRP-conjugated anti-mouse IgG antibody (GTX213111-01) was used to detect the primary antibody.



### GTX632361 WB Image

alpha Actinin 2 antibody detects alpha Actinin 2 protein by western blot analysis. Whole cell extracts (30 µg) was separated by 7.5% SDS-PAGE, and the membrane was blotted with alpha Actinin 2 antibody (GTX632361) at a dilution of 1:1000.



### GTX632361 IHC-P Image

alpha Actinin 2 antibody [GT1253] detects alpha Actinin 2 protein at cytoplasm in mouse muscle by immunohistochemical analysis.

Sample: Paraffin-embedded mouse muscle.

alpha Actinin 2 antibody [GT1253] (GTX632361) diluted at 1:250.

Antigen Retrieval: Citrate buffer, pH 6.0, 15 min



For full product information, images and publications, please visit our [website](https://www.genetex.com).