

PARP antibody [GT982]

Cat. No. GTX632388

Host	Mouse
Clonality	Monoclonal
Isotype	IgG1
Application	WB, ICC/IF, IP
Reactivity	Human

Reference (1)

Package

100 µl, 25 µl

APPLICATION

Application Note

*Optimal dilutions/concentrations should be determined by the researcher.

Suggested dilution	Recommended dilution
WB	1:500-1:3000
ICC/IF	1:100-1:1000
IP	1:100-1:500

Not tested in other applications.

Calculated MW 113 kDa. ([Note](#))

Product Note This antibody is specific for human PARP1 protein, and it does not cross react with human PARP2 and PARP3 protein. IP/MS validation was supported by references (PMID:30377429)

PROPERTIES

Form	Liquid
Buffer	PBS
Preservative	No preservative
Storage	Store as concentrated solution. Centrifuge briefly prior to opening vial. For short-term storage (1-2 weeks), store at 4°C. For long-term storage, aliquot and store at -20°C or below. Avoid multiple freeze-thaw cycles.
Concentration	1.65 mg/ml (Please refer to the vial label for the specific concentration.)
Immunogen	Recombinant protein encompassing a sequence within the center region of human PARP1. The exact sequence is proprietary.
Purification	Affinity purified by Protein G.
Conjugation	Unconjugated

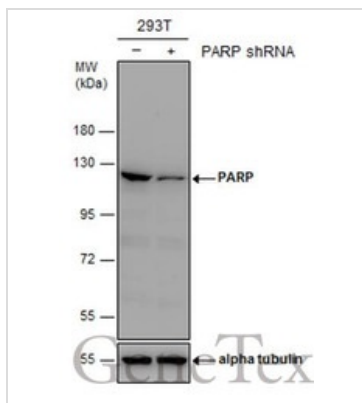


For full product information, images and publications, please visit our [website](#).

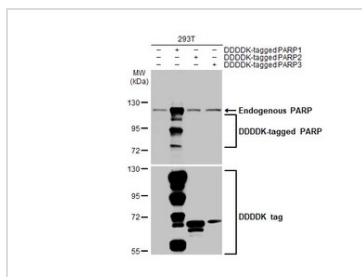
For laboratory research use only. Not for any clinical, therapeutic, or diagnostic use in humans or animals. Not for animal or human consumption.

Note

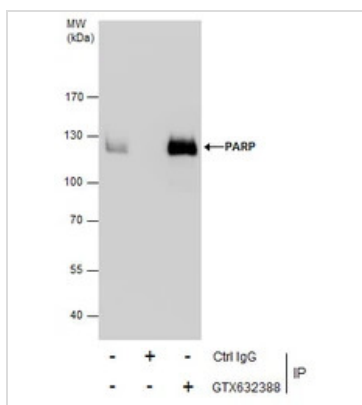
Purchasers shall not, and agree not to enable third parties to, analyze, copy, reverse engineer or otherwise attempt to determine the structure or sequence of the product.

DATA IMAGES

GTX632388 WB Image

Non-transfected (–) and transfected (+) 293T whole cell extracts (30 µg) were separated by 7.5% SDS-PAGE, and the membrane was blotted with PARP antibody [GT982] (GTX632388) diluted at 1:1000.


GTX632388 WB Image

Non-transfected (–) and transfected (+) 293T whole cell extracts (30 µg) were separated by 7.5% SDS-PAGE, and the membrane was blotted with PARP antibody [GT982] (GTX632388) diluted at 1:50000. The HRP-conjugated anti-mouse IgG antibody (GTX213111-01) was used to detect the primary antibody.


GTX632388 IP Image

Immunoprecipitation of PARP protein from 293T whole cell extracts using 5 µg of PARP antibody (GTX632388).

Western blot analysis was performed using PARP antibody (GTX632388).

EasyBlot anti-Mouse IgG (GTX221667-01) was used as a secondary reagent.



For full product information, images and publications, please visit our [website](https://www.genetex.com).