

## Filamin B antibody [GT387]

Cat. No. GTX632425

Host	Mouse
Clonality	Monoclonal
Isotype	IgG2b
Applications	WB, ICC/IF, IHC-P
Reactivity	Human, Rat

Package  
100 µl, 25 µl

## Applications

## Application Note

\*Optimal dilutions/concentrations should be determined by the researcher.

Suggested dilution	Recommended dilution
WB	1:500-1:3000
ICC/IF	1:100-1:1000
IHC-P	1:100-1:1000

Not tested in other applications.

Calculated MW 278 kDa. ([Note](#))

## Properties

Form	Liquid
Buffer	PBS
Preservative	No preservatives
Storage	Store as concentrated solution. Centrifuge briefly prior to opening vial. For short-term storage (1-2 weeks), store at 4°C. For long-term storage, aliquot and store at -20°C or below. Avoid multiple freeze-thaw cycles.
Concentration	1.64 mg/ml (Please refer to the vial label for the specific concentration.)
Immunogen	Recombinant protein encompassing a sequence within the N-terminus region of human Filamin B. The exact sequence is proprietary.
Purification	Affinity purified by Protein A.
Conjugation	Unconjugated

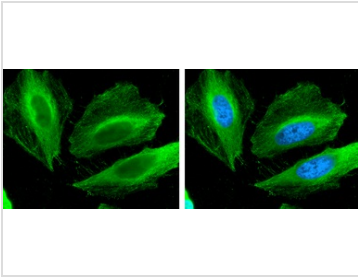
## Note

For laboratory research use only. Not for any clinical, therapeutic, or diagnostic use in humans or animals. Not for animal or human consumption.

Purchasers shall not, and agree not to enable third parties to, analyze, copy, reverse engineer or otherwise attempt to determine the structure or sequence of the product.



For full product information, images and publications, please visit our [website](#).

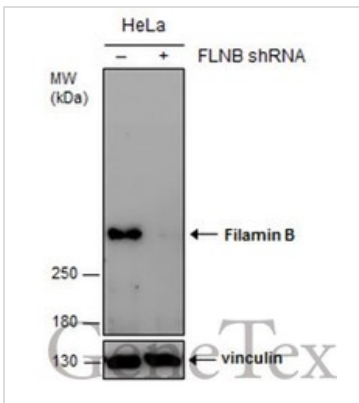
**DATA IMAGES**

**GTX632425 ICC/IF Image**

Filamin B antibody [GT387] detects Filamin B protein at cytoskeleton by immunofluorescent analysis.

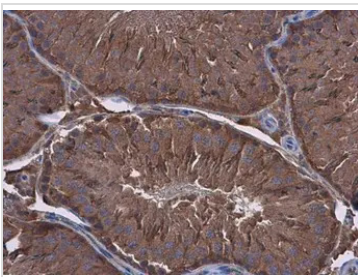
Sample: HeLa cells were fixed in 4% paraformaldehyde at RT for 15 min.

Green: Filamin B protein stained by Filamin B antibody [GT387] (GTX632425) diluted at 1:200.

Blue: Hoechst 33342 staining.


**GTX632425 WB Image**

Non-transfected (–) and transfected (+) HeLa whole cell extracts (30 µg) were separated by 5% SDS-PAGE, and the membrane was blotted with Filamin B antibody [GT387] (GTX632425) diluted at 1:500.

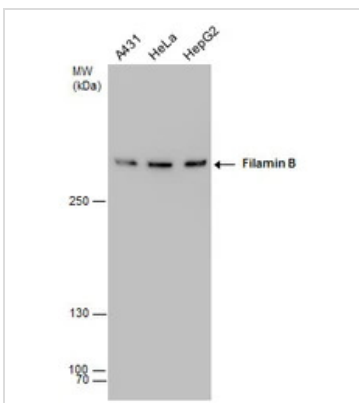

**GTX632425 IHC-P Image**

Filamin B antibody [GT387] detects Filamin B protein at cytoplasm in rat testis by immunohistochemical analysis.

Sample: Paraffin-embedded rat testis.

Filamin B antibody [GT387] (GTX632425) diluted at 1:500.

Antigen Retrieval: Citrate buffer, pH 6.0, 15 min


**GTX632425 WB Image**

Filamin B antibody [GT387] detects Filamin B protein by western blot analysis. Various whole cell extracts (30 µg) were separated by 5% SDS-PAGE, and the membrane was blotted with Filamin B antibody [GT387] (GTX632425) diluted at a dilution of 1:1000.



For full product information, images and publications, please visit our [website](https://www.genetex.com).