

Iba1 antibody [GT10312]

Cat No. GTX632426

Host	Mouse
Clonality	Monoclonal
Isotype	IgG1
Application	WB, ICC/IF, IHC-P, FACS
Reactivity	Human, Mouse, Rat

Reference (4)

Package

100 µl, 25 µl

APPLICATION

Application Note

*Optimal dilutions/concentrations should be determined by the researcher.

Suggested dilution	Dilution
WB	1:500-1:3000
ICC/IF	1:100-1:1000
IHC-P	1:100-1:1000
FACS	1:50-1:200

Not tested in other applications.

Calculated MW 17 kDa. ([Note](#))

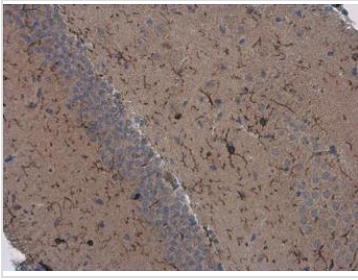
PROPERTIES

Form	Liquid
Buffer	PBS
Storage	Store as concentrated solution. Centrifuge briefly prior to opening vial. For short-term storage (1-2 weeks), store at 4°C. For long-term storage, aliquot and store at -20°C or below. Avoid multiple freeze-thaw cycles.
Concentration	1.36 mg/ml (Please refer to the vial label for the specific concentration.)
Immunogen	Recombinant protein encompassing a sequence within the center region of human Iba1. The exact sequence is proprietary.
Purification	Affinity purified by Protein G.
Conjugation	Unconjugated
Note	For laboratory use only. Not for any clinical, therapeutic, or diagnostic use in humans or animals. Not for animal or human consumption.



For full product information, images and publications, please visit our [website](#).

DATA IMAGES

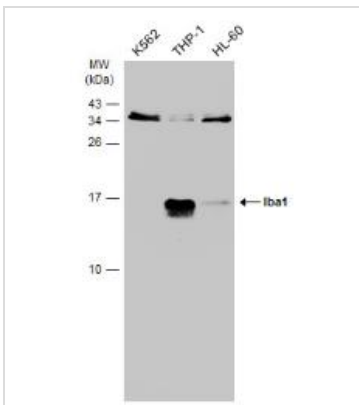
**GTX632426 IHC-P Image**

Iba1 antibody [GT10312] detects Iba1 protein at microglia in mouse brain by immunohistochemical analysis.

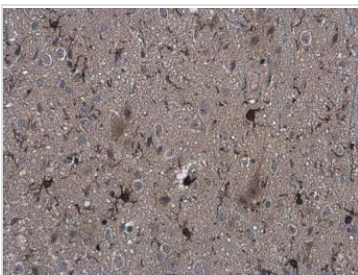
Sample: Paraffin-embedded mouse brain.

Iba1 antibody [GT10312] (GTX632426) diluted at 1:200.

Antigen Retrieval: Citrate buffer, pH 6.0, 15 min

**GTX632426 WB Image**

Various whole cell extracts (30 µg) were separated by 15% SDS-PAGE, and the membrane was blotted with Iba1 antibody [GT10312] (GTX632426) diluted at 1:500. The HRP-conjugated anti-mouse IgG antibody (GTX213111-01) was used to detect the primary antibody.

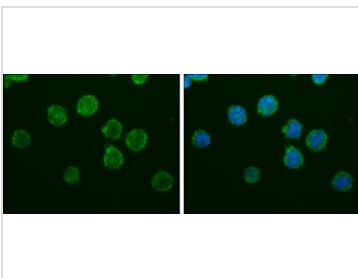
**GTX632426 IHC-P Image**

Iba1 antibody [GT10312] detects Iba1 protein at microglia in rat brain by immunohistochemical analysis.

Sample: Paraffin-embedded rat brain.

Iba1 antibody [GT10312] (GTX632426) diluted at 1:200.

Antigen Retrieval: Citrate buffer, pH 6.0, 15 min

**GTX632426 ICC/IF Image**

Iba1 antibody [GT10312] detects Iba1 protein at cytoplasm by immunofluorescent analysis.

Sample: THP-1 cells were fixed in 4% paraformaldehyde at RT for 15 min.

Green: Iba1 protein stained by Iba1 antibody [GT10312] (GTX632426) diluted at 1:200.

Blue: Hoechst 33342 staining.



For full product information, images and publications, please visit our [website](#).