

## T-Plastin antibody [GT236]

**Cat. No. GTX632481**

<b>Host</b>	Mouse
<b>Clonality</b>	Monoclonal
<b>Isotype</b>	IgG1
<b>Application</b>	WB, IHC-P
<b>Reactivity</b>	Human, Mouse

**Package**  
100 µl, 25 µl

### APPLICATION

#### Application Note

\*Optimal dilutions/concentrations should be determined by the researcher.

Suggested dilution	Recommended dilution
WB	1:500-1:3000
IHC-P	1:100-1:1000

Not tested in other applications.

**Calculated MW** 71 kDa. ( [Note](#) )

### PROPERTIES

<b>Form</b>	Liquid
<b>Buffer</b>	PBS
<b>Preservative</b>	No preservative
<b>Storage</b>	Store as concentrated solution. Centrifuge briefly prior to opening vial. For short-term storage (1-2 weeks), store at 4°C. For long-term storage, aliquot and store at -20°C or below. Avoid multiple freeze-thaw cycles.
<b>Concentration</b>	1 mg/ml (Please refer to the vial label for the specific concentration.)
<b>Immunogen</b>	Recombinant protein encompassing a sequence within the center region of human T-Plastin. The exact sequence is proprietary.
<b>Purification</b>	Affinity purified by Protein G.
<b>Conjugation</b>	Unconjugated

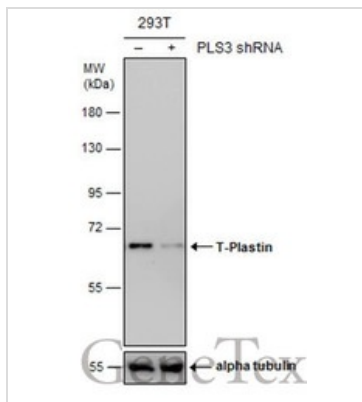
#### Note

For laboratory research use only. Not for any clinical, therapeutic, or diagnostic use in humans or animals. Not for animal or human consumption.

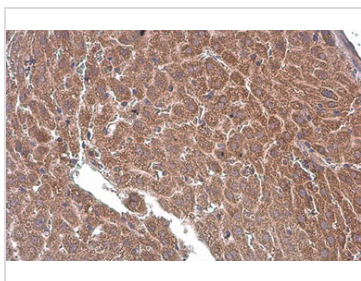
Purchasers shall not, and agree not to enable third parties to, analyze, copy, reverse engineer or otherwise attempt to determine the structure or sequence of the product.



For full product information, images and publications, please visit our [website](#).

**DATA IMAGES**

**GTX632481 WB Image**

Non-transfected (-) and transfected (+) 293T whole cell extracts (30 µg) were separated by 7.5% SDS-PAGE, and the membrane was blotted with T-Plastin antibody [GT236] (GTX632481) diluted at 1:1000.

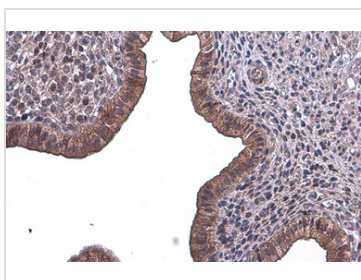

**GTX632481 IHC-P Image**

T-Plastin antibody [GT236] detects T-Plastin protein at cytoplasm by immunohistochemical analysis.

Sample: Paraffin-embedded mouse liver.

T-Plastin stained by T-Plastin antibody [GT236] (GTX632481) diluted at 1:200.

Antigen Retrieval: Citrate buffer, pH 6.0, 15 min

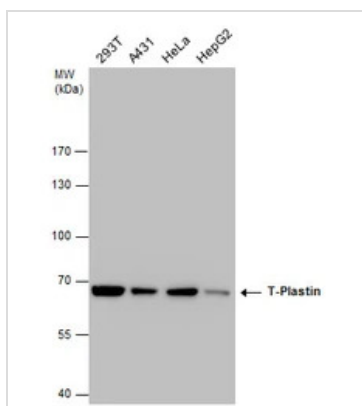

**GTX632481 IHC-P Image**

T-Plastin antibody [GT236] detects T-Plastin protein at cytoplasm by immunohistochemical analysis.

Sample: Paraffin-embedded mouse cervix.

T-Plastin stained by T-Plastin antibody [GT236] (GTX632481) diluted at 1:200.

Antigen Retrieval: Citrate buffer, pH 6.0, 15 min


**GTX632481 WB Image**

T-Plastin antibody detects T-Plastin protein by western blot analysis. Various whole cell extracts (30 µg) were separated by 7.5% SDS-PAGE, and the membrane was blotted with T-Plastin antibody (GTX632481) diluted at a dilution of 1:1000.



For full product information, images and publications, please visit our [website](https://www.genetex.com).