

## T-Plastin antibody [GT3310]

Cat. No. GTX632482

Host	Mouse
Clonality	Monoclonal
Isotype	IgG2b
Application	WB, ICC/IF, IHC-P
Reactivity	Human, Mouse, Rat

Reference ( 1 )  
Package  
100 µl, 25 µl

## APPLICATION

## Application Note

\*Optimal dilutions/concentrations should be determined by the researcher.

Suggested dilution	Recommended dilution
WB	1:500-1:3000
ICC/IF	1:100-1:1000
IHC-P	1:100-1:1000

Not tested in other applications.

Calculated MW 71 kDa. ( [Note](#) )

## PROPERTIES

Form	Liquid
Buffer	PBS
Preservative	No preservative
Storage	Store as concentrated solution. Centrifuge briefly prior to opening vial. For short-term storage (1-2 weeks), store at 4°C. For long-term storage, aliquot and store at -20°C or below. Avoid multiple freeze-thaw cycles.
Concentration	2.39 mg/ml (Please refer to the vial label for the specific concentration.)
Immunogen	Recombinant protein encompassing a sequence within the center region of human T-Plastin. The exact sequence is proprietary.
Purification	Affinity purified by Protein A.
Conjugation	Unconjugated

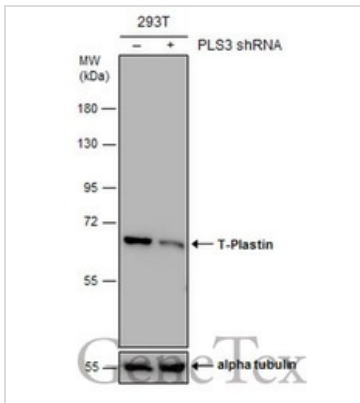
**Note** For laboratory research use only. Not for any clinical, therapeutic, or diagnostic use in humans or animals. Not for animal or human consumption.

Purchasers shall not, and agree not to enable third parties to, analyze, copy, reverse engineer or otherwise attempt to determine the structure or sequence of the product.



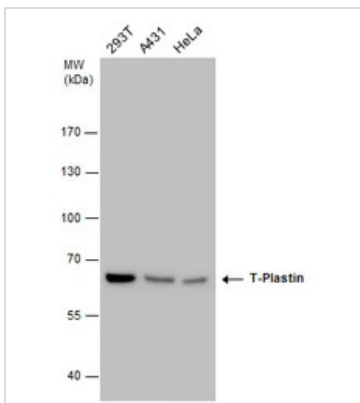
For full product information, images and publications, please visit our [website](#).

## DATA IMAGES



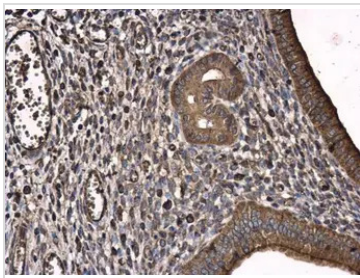
### GTX632482 WB Image

Non-transfected (–) and transfected (+) 293T whole cell extracts (30 µg) were separated by 7.5% SDS-PAGE, and the membrane was blotted with T-Plastin antibody [GT3310] (GTX632482) diluted at 1:1000.



### GTX632482 WB Image

T-Plastin antibody detects T-Plastin protein by western blot analysis. Various whole cell extracts (30 µg) were separated by 7.5% SDS-PAGE, and the membrane was blotted with T-Plastin antibody (GTX632482) diluted at a dilution of 1:1000.



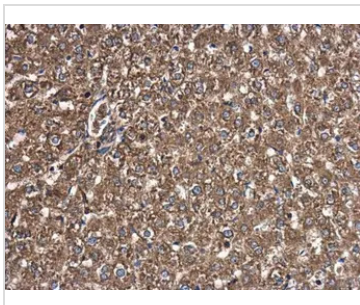
### GTX632482 IHC-P Image

T-Plastin antibody [GT3310] detects T-Plastin protein at cytoplasm in mouse cervix by immunohistochemical analysis.

Sample: Paraffin-embedded mouse cervix.

T-Plastin antibody [GT3310] (GTX632482) diluted at 1:250.

Antigen Retrieval: Citrate buffer, pH 6.0, 15 min



### GTX632482 IHC-P Image

T-Plastin antibody [GT3310] detects T-Plastin protein at cytoplasm in rat liver by immunohistochemical analysis.

Sample: Paraffin-embedded rat liver.

T-Plastin antibody [GT3310] (GTX632482) diluted at 1:250.

Antigen Retrieval: Citrate buffer, pH 6.0, 15 min



For full product information, images and publications, please visit our [website](https://www.genetex.com).