

LC3B antibody [GT3612]

Cat. No. GTX632501

Host	Mouse
Clonality	Monoclonal
Isotype	IgG2a
Applications	WB, ICC/IF, IHC-P
Reactivity	Human

References (4)

Package

100 µl, 25 µl

Applications

Application Note

*Optimal dilutions/concentrations should be determined by the researcher.

Suggested dilution	Recommended dilution
WB	1:500-1:3000
ICC/IF	1:100-1:1000
IHC-P	Assay dependent

Not tested in other applications.

Calculated MW 15 kDa. ([Note](#))

Properties

Form	Liquid
Buffer	PBS
Preservative	No preservatives
Storage	Store as concentrated solution. Centrifuge briefly prior to opening vial. For short-term storage (1-2 weeks), store at 4°C. For long-term storage, aliquot and store at -20°C or below. Avoid multiple freeze-thaw cycles.
Concentration	1 mg/ml (Please refer to the vial label for the specific concentration.)
Immunogen	Carrier-protein conjugated synthetic peptide encompassing a sequence within the N-terminus region of human LC3B. The exact sequence is proprietary.
Purification	Affinity purified by Protein A. From tissue culture supernatant
Conjugation	Unconjugated

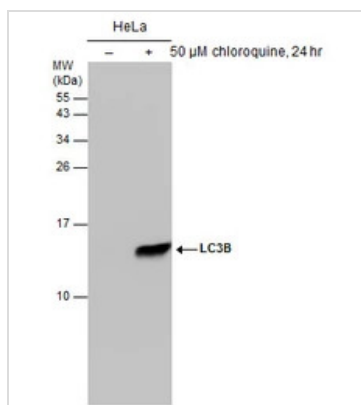


For full product information, images and publications, please visit our [website](#).

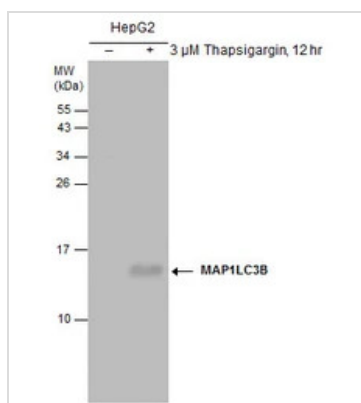
For laboratory research use only. Not for any clinical, therapeutic, or diagnostic use in humans or animals. Not for animal or human consumption.

Note

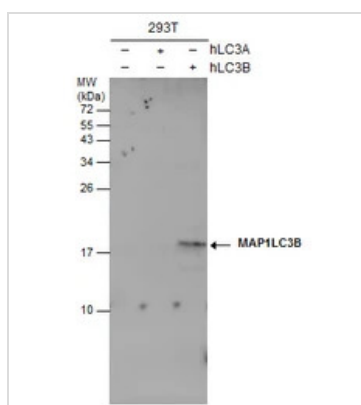
Purchasers shall not, and agree not to enable third parties to, analyze, copy, reverse engineer or otherwise attempt to determine the structure or sequence of the product.

DATA IMAGES

GTX632501 WB Image

Untreated (-) and treated (+) HeLa whole cell extracts (50 μ g) were separated by 15% SDS-PAGE, and the membrane was blotted with LC3B antibody [GT3612] (GTX632501) diluted at 1:500.


GTX632501 WB Image

Untreated (-) and treated (+) HepG2 whole cell extracts (30 μ g) were separated by 15% SDS-PAGE, and the membrane was blotted with LC3B antibody [GT3612] (GTX632501) diluted at 1:500.


GTX632501 WB Image

Non-transfected (-) and transfected (+) 293T whole cell extracts (30 μ g) were separated by 15% SDS-PAGE, and the membrane was blotted with LC3B antibody [GT3612] (GTX632501) diluted at 1:500.



For full product information, images and publications, please visit our [website](https://www.genetex.com).