

## CXCL16 antibody [GT516]

Cat. No. GTX632502

|              |                   |
|--------------|-------------------|
| Host         | Mouse             |
| Clonality    | Monoclonal        |
| Isotype      | IgG2a             |
| Applications | WB, ICC/IF, IHC-P |
| Reactivity   | Human, Mouse, Rat |

References ( 3 )

Package

100 µl, 25 µl

## Applications

## Application Note

\*Optimal dilutions/concentrations should be determined by the researcher.

| Suggested dilution | Recommended dilution |
|--------------------|----------------------|
| WB                 | 1:1000-1:10000       |
| ICC/IF             | Assay dependent      |
| IHC-P              | 1:100-1:1000         |

Not tested in other applications.

**Observed MW (kDa)** 28 kDa.

**Product Note** This antibody was raised against human CXCL16 Extracellular domain.

## Properties

|               |  |
|---------------|--|
| Form          | Liquid   |
| Buffer        | PBS  |
| Preservative  | No preservatives   |
| Storage       | Store as concentrated solution. Centrifuge briefly prior to opening vial. For short-term storage (1-2 weeks), store at 4°C. For long-term storage, aliquot and store at -20°C or below. Avoid multiple freeze-thaw cycles. |
| Concentration | 1 mg/ml (Please refer to the vial label for the specific concentration.)   |
| Immunogen     | Recombinant protein encompassing a sequence within the Extracellular domain of human CXCL16. The exact sequence is proprietary.  |
| Purification  | Affinity purified by Protein A.  |
| Conjugation   | Unconjugated   |



For full product information, images and publications, please visit our [website](#).

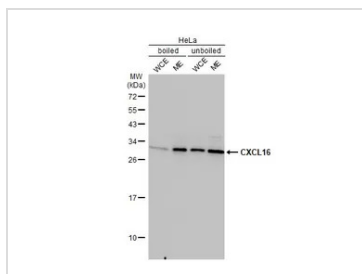
Date 2026 / 01 / 08 Page 1 of 2

For laboratory research use only. Not for any clinical, therapeutic, or diagnostic use in humans or animals. Not for animal or human consumption.

## Note

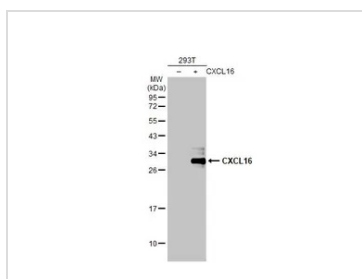
Purchasers shall not, and agree not to enable third parties to, analyze, copy, reverse engineer or otherwise attempt to determine the structure or sequence of the product.

## DATA IMAGES



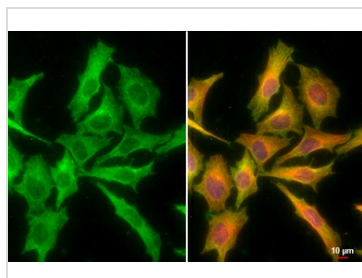
### GTX632502 WB Image

HeLa whole cell extract and membrane extracts (30 µg) were separated by 12% SDS-PAGE, and the membrane was blotted with CXCL16 antibody [GT516] (GTX632502) diluted at 1:1000. The HRP-conjugated anti-mouse IgG antibody (GTX213111-01) was used to detect the primary antibody. (WCE: whole cell extract; ME: membrane extract)



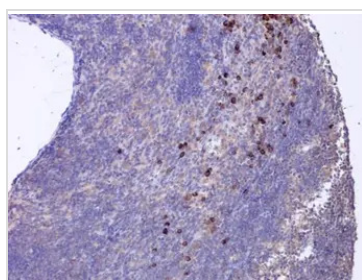
### GTX632502 WB Image

Non-transfected (-) and transfected (+) 293T whole cell extracts (30 µg) were separated by 12% SDS-PAGE, and the membrane was blotted with CXCL16 antibody [GT516] (GTX632502) diluted at 1:1000. The HRP-conjugated anti-mouse IgG antibody (GTX213111-01) was used to detect the primary antibody.



### GTX632502 ICC/IF Image

CXCL16 antibody [GT516] detects CXCL16 protein at cytoplasm by immunofluorescent analysis. Sample: HeLa cells were fixed in 4% paraformaldehyde at RT for 15 min. Green: CXCL16 stained by CXCL16 antibody [GT516] (GTX632502) diluted at 1:500. Red: beta Tubulin, a cytoskeleton marker, stained by beta Tubulin antibody (GTX101279) diluted at 1:1000. Blue: Fluoroshield with DAPI (GTX30920). Scale bar= 10µm.



### GTX632502 IHC-P Image

CXCL16 antibody [GT516] detects CXCL16 protein at cytoplasm in rat lymph node by immunohistochemical analysis. Sample: Paraffin-embedded rat lymph node. CXCL16 antibody [GT516] (GTX632502) diluted at 1:200. Antigen Retrieval: Citrate buffer, pH 6.0, 15 min



For full product information, images and publications, please visit our [website](https://www.genetex.com).