

SARS-CoV / SARS-CoV-2 (COVID-19) ORF7a antibody [3C9]

Cat. No. GTX632602

| | |
|---------------------|--------------------------------------|
| Host | Mouse |
| Clonality | Monoclonal |
| Isotype | IgG1 |
| Applications | WB, ICC/IF |
| Reactivity | SARS Coronavirus, SARS Coronavirus 2 |

References (7)

★★★★★ Review (1)

Package

100 µl, 25 µl

Applications

Application Note

*Optimal dilutions/concentrations should be determined by the researcher.

| Suggested dilution | Recommended dilution |
|--------------------|----------------------|
| WB | 1:500-1:3000 |
| ICC/IF | Assay dependent |

Not tested in other applications.

Observed MW (kDa) 15 kDa. The observed M.W. is based on the following publication. PMID: 15220404

Properties

| | |
|----------------------|--|
| Form | Liquid |
| Buffer | PBS |
| Preservative | No preservatives |
| Storage | Store as concentrated solution. Centrifuge briefly prior to opening vial. For short-term storage (1-2 weeks), store at 4°C. For long-term storage, aliquot and store at -20°C or below. Avoid multiple freeze-thaw cycles. |
| Concentration | 1 mg/ml (Please refer to the vial label for the specific concentration.) |
| Immunogen | The immunogen used to generate this antibody corresponds to SARS-CoV ORF7a protein (16-111 a.a.). |
| Purification | Affinity purified by Protein G. |
| Conjugation | Unconjugated |

Note

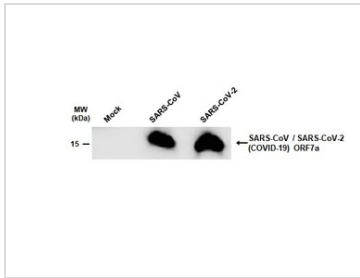
For laboratory research use only. Not for any clinical, therapeutic, or diagnostic use in humans or animals. Not for animal or human consumption.

Purchasers shall not, and agree not to enable third parties to, analyze, copy, reverse engineer or otherwise attempt to determine the structure or sequence of the product.



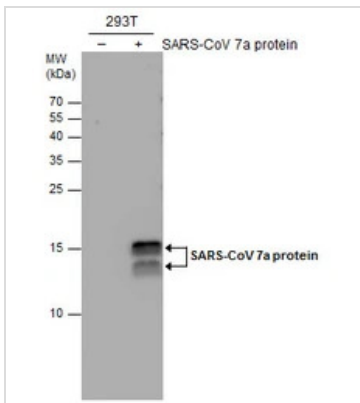
For full product information, images and publications, please visit our [website](#).

DATA IMAGES



GTX632602 WB Image

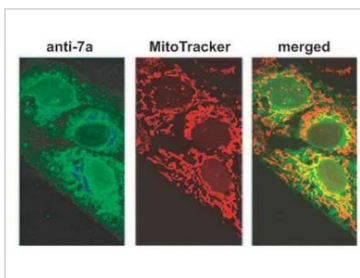
Non-infected (–) and infected (+, 48h p.i. MOI 0.01) Caco2 whole cell extracts were separated by SDS-PAGE, and the membrane was blotted with SARS-CoV / SARS-CoV-2 (COVID-19) ORF7a antibody [3C9] (GTX632602) diluted at 1:1000.



GTX632602 WB Image

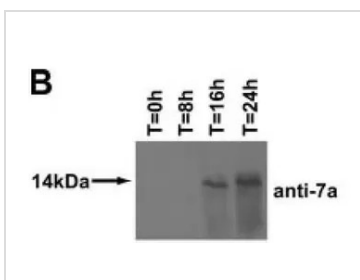
SARS-CoV / SARS-CoV-2 (COVID-19) ORF7a antibody [3C9] detects SARS-CoV ORF7a protein by western blot analysis. Non-transfected (–) and SARS-CoV ORF7a-transfected (+) 293T whole cell extracts (30 µg) were separated by 15% SDS-PAGE, and the membrane was blotted with SARS-CoV / SARS-CoV-2 (COVID-19) ORF7a antibody [3C9] (GTX632602) diluted at 1:1000.

The observed M.W. is based on the publication: [PMID: 15220404](https://pubmed.ncbi.nlm.nih.gov/15220404/)



GTX632602 ICC/IF Image

ICC/IF analysis of Vero E6 cells expressing ORF7a using GTX632602 SARS-CoV / SARS-CoV-2 (COVID-19) ORF7a antibody [3C9].



GTX632602 WB Image

WB analysis of SARS-CoV-infected Vero E6 cells harvested at different time points postinfection using GTX632602 SARS-CoV / SARS-CoV-2 (COVID-19) ORF7a antibody [3C9].



For full product information, images and publications, please visit our [website](https://www.genetex.com).