

# SARS-CoV Spike (SΔ3) antibody [7G12]

**Cat. No. GTX632603**

|                     |                  |
|---------------------|------------------|
| <b>Host</b>         | Mouse            |
| <b>Clonality</b>    | Monoclonal       |
| <b>Isotype</b>      | IgG1             |
| <b>Applications</b> | WB, IP           |
| <b>Reactivity</b>   | SARS Coronavirus |

**Package**  
100 µl, 25 µl

## Applications

### Application Note

\*Optimal dilutions/concentrations should be determined by the researcher.

| Suggested dilution | Recommended dilution |
|--------------------|----------------------|
| WB                 | 1:500-1:3000         |
| IP                 | Assay dependent      |

Not tested in other applications.

### Product Note

This antibody detects SARS-CoV spike protein (S1 subunit), and may have minor cross-reactivity with SARS-CoV-2 spike protein based on data from an external lab. Our internal testing indicates no cross-reactivity with MERS-CoV spike protein.

## Properties

|                      |  |
|----------------------|--|
| <b>Form</b>          | Liquid   |
| <b>Buffer</b>        | PBS  |
| <b>Preservative</b>  | No preservatives   |
| <b>Storage</b>       | Store as concentrated solution. Centrifuge briefly prior to opening vial. For short-term storage (1-2 weeks), store at 4°C. For long-term storage, aliquot and store at -20°C or below. Avoid multiple freeze-thaw cycles. |
| <b>Concentration</b> | 1 mg/ml (Please refer to the vial label for the specific concentration.)   |
| <b>Immunogen</b>     | The immunogen used to generate this antibody corresponds to SARS-CoV SΔ3 (within S1 domain) protein (168-461 a.a.).  |
| <b>Purification</b>  | Affinity purified by Protein G.  |
| <b>Conjugation</b>   | Unconjugated   |

### Note

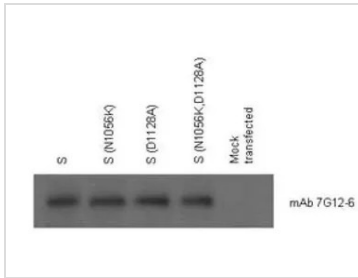
For laboratory research use only. Not for any clinical, therapeutic, or diagnostic use in humans or animals. Not for animal or human consumption.

Purchasers shall not, and agree not to enable third parties to, analyze, copy, reverse engineer or otherwise attempt to determine the structure or sequence of the product.



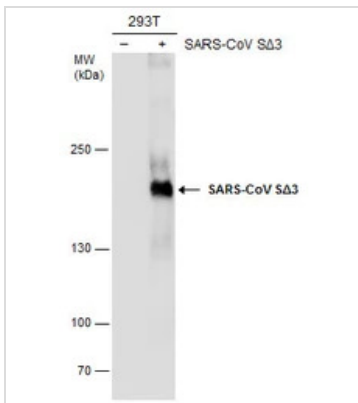
For full product information, images and publications, please visit our [website](#).

DATA IMAGES



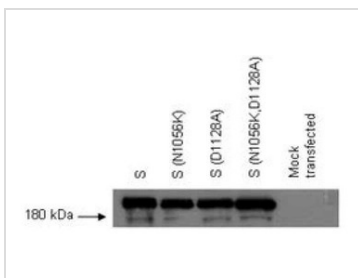
**GTX632603 WB IP Image**

WB/IP analysis of 293T cells transfected with expression plasmid for wild-type S and mutated forms of S (S(N1056K), S(D1128A), S(N1056K, D1128A)) using GTX632603 SARS-CoV SΔ3 antibody [7G12].



**GTX632603 WB Image**

SARS-CoV SΔ3 antibody detects SARS-CoV SΔ3 protein by western blot analysis. Non-transfected (-) and SARS-CoV SΔ3-transfected (+) 293T whole cell extracts (30 μg) were separated by 5% SDS-PAGE, and the membrane was blotted with SARS-CoV SΔ3 antibody (GTX632603) diluted at 1:1000.



**GTX632603 WB Image**

WB analysis of 293T cells transfected with expression plasmid for wild-type S and mutated forms of S (S(N1056K), S(D1128A), S(N1056K, D1128A)) using GTX632603 SARS-CoV SΔ3 antibody [7G12].



For full product information, images and publications, please visit our [website](https://www.genetex.com).