

CD31 antibody [GT0010]

Cat. No. GTX632645

Host	Armenian Hamster
Clonality	Monoclonal
Isotype	IgG
Applications	FCM
Reactivity	Mouse

[References \(3 \)](#)
[Package](#)

100 µl, 25 µl

Applications

Application Note

*Optimal dilutions/concentrations should be determined by the researcher.

Suggested dilution	Recommended dilution
FCM	1:50-1:200

Not tested in other applications.

Properties

Form	Liquid
Buffer	PBS
Preservative	No preservatives
Storage	Store as concentrated solution. Centrifuge briefly prior to opening vial. For short-term storage (1-2 weeks), store at 4°C. For long-term storage, aliquot and store at -20°C or below. Avoid multiple freeze-thaw cycles.
Concentration	0.79 mg/ml (Please refer to the vial label for the specific concentration.)
Immunogen	The immunogen used to generate this antibody corresponds to human CD31
Purification	Affinity purified by Protein G.
Conjugation	Unconjugated

Note

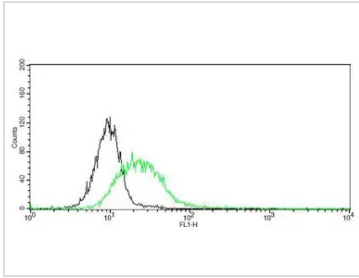
For laboratory research use only. Not for any clinical, therapeutic, or diagnostic use in humans or animals. Not for animal or human consumption.

Purchasers shall not, and agree not to enable third parties to, analyze, copy, reverse engineer or otherwise attempt to determine the structure or sequence of the product.



For full product information, images and publications, please visit our [website](#).

DATA IMAGES

**GTX632645 FCM Image**

CD31 antibody detects CD31 protein by flow cytometry analysis.

Sample: Raw264.7 cell fixed in 4% paraformaldehyde at 4oC for 5 min.

Black: Isotype control (GTX25739) dilution: 1:100.

Green: CD31 antibody (GTX632645) dilution: 1:100.



For full product information, images and publications, please visit our [website](#).