

## SARS-CoV / SARS-CoV-2 (COVID-19) nsp8 antibody [5A10]

Cat. No. GTX632696

|              |                                      |
|--------------|--------------------------------------|
| Host         | Mouse                                |
| Clonality    | Monoclonal                           |
| Isotype      | IgG1                                 |
| Applications | WB, ICC/IF, IHC-Fr, FCM              |
| Reactivity   | SARS Coronavirus, SARS Coronavirus 2 |

References ( 13 )

★★★★★ Review ( 2 )

Package

100 µl, 25 µl

## Applications

## Application Note

\*Optimal dilutions/concentrations should be determined by the researcher.

| Suggested dilution | Recommended dilution |
|--------------------|----------------------|
| WB                 | 1:1000-1:10000       |
| ICC/IF             | Assay dependent      |
| IHC-Fr             | Assay dependent      |
| FCM                | Assay dependent      |

Not tested in other applications.

## Properties

|               |  |
|---------------|--|
| Form          | Liquid   |
| Buffer        | PBS  |
| Preservative  | No preservatives   |
| Storage       | Store as concentrated solution. Centrifuge briefly prior to opening vial. For short-term storage (1-2 weeks), store at 4°C. For long-term storage, aliquot and store at -20°C or below. Avoid multiple freeze-thaw cycles. |
| Concentration | 0.67 mg/ml (Please refer to the vial label for the specific concentration.)  |
| Immunogen     | The immunogen used to generate this antibody corresponds to SARS virus nsp8.   |
| Purification  | Affinity purified by Protein G.  |
| Conjugation   | Unconjugated   |

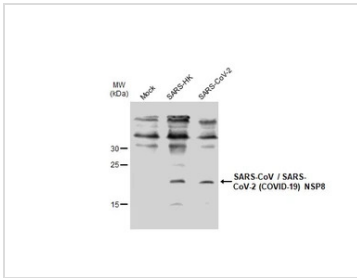
## Note

For laboratory research use only. Not for any clinical, therapeutic, or diagnostic use in humans or animals. Not for animal or human consumption.

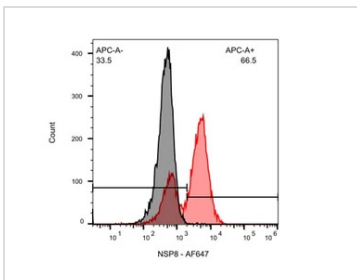
Purchasers shall not, and agree not to enable third parties to, analyze, copy, reverse engineer or otherwise attempt to determine the structure or sequence of the product.



For full product information, images and publications, please visit our [website](#).

**DATA IMAGES**

**GTx632696 WB Image**

Non-infected (–) and infected (+, 48h pi MOI 0.01) whole cell extracts were separated by SDS-PAGE, and the membrane was blotted with SARS-CoV / SARS-CoV-2 (COVID-19) NSP8 antibody [5A10] (GTx632696) diluted at 1:1000.

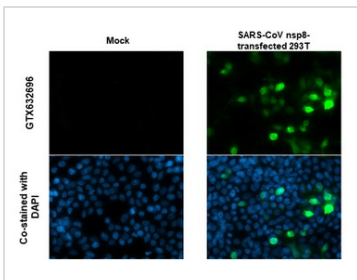

**GTx632696 FCM Image**

SARS-CoV / SARS-CoV-2 (COVID-19) NSP8 antibody [5A10] (GTx632696) detects SARS-CoV-2 (COVID-19) NSP8 by flow cytometry analysis.

Sample: Vero E6 cells infected with SARS-CoV-2.

Black: Uninfected Vero E6 cells was used as a control.

Red: SARS-CoV / SARS-CoV-2 (COVID-19) NSP8 antibody [5A10] (GTx632696) dilution: 1:100.

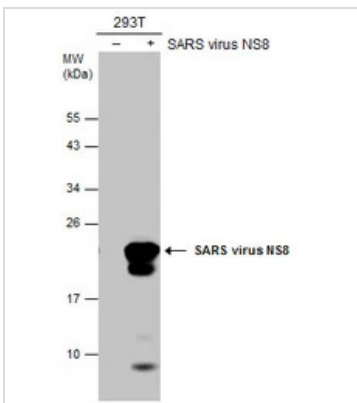

**GTx632696 ICC/IF Image**

SARS-CoV / SARS-CoV-2 (COVID-19) NSP8 antibody [5A10] detects SARS-CoV / SARS-CoV-2 (COVID-19) NSP8 protein by immunofluorescent analysis.

Sample: Mock and transfected 293T cells were fixed in 4% paraformaldehyde at RT for 15 min.

Green: SARS-CoV / SARS-CoV-2 (COVID-19) NSP8 stained by SARS-CoV / SARS-CoV-2 (COVID-19) NSP8 antibody [5A10] (GTx632696) diluted at 1:1000.

Blue: Fluoroshield with DAPI (GTx30920).


**GTx632696 WB Image**

Non-transfected (–) and transfected (+) 293T whole cell extracts (30 µg) were separated by 12% SDS-PAGE, and the membrane was blotted with SARS-CoV / SARS-CoV-2 (COVID-19) NSP8 antibody [5A10] (GTx632696) diluted at 1:5000.



For full product information, images and publications, please visit our [website](https://www.genetex.com).