

DAPP1 antibody [4H9]

Cat. No. GTX633252

Host	Mouse
Clonality	Monoclonal
Isotype	IgG1
Applications	WB, IHC-P
Reactivity	Human, Mouse, Rat

Package
100 µl, 25 µl

Applications

Application Note

*Optimal dilutions/concentrations should be determined by the researcher.

Suggested dilution	Recommended dilution
WB	1:500-1:3000
IHC-P	1:100-1:1000

Not tested in other applications.

Calculated MW 32 kDa. ([Note](#))

Properties

Form	Liquid
Buffer	PBS
Preservative	No preservatives
Storage	Store as concentrated solution. Centrifuge briefly prior to opening vial. For short-term storage (1-2 weeks), store at 4°C. For long-term storage, aliquot and store at -20°C or below. Avoid multiple freeze-thaw cycles.
Concentration	2.36 mg/ml (Please refer to the vial label for the specific concentration.)
Immunogen	The immunogen used to generate this antibody corresponds to human DAPP1.
Purification	Affinity purified by Protein A.
Conjugation	Unconjugated

Note

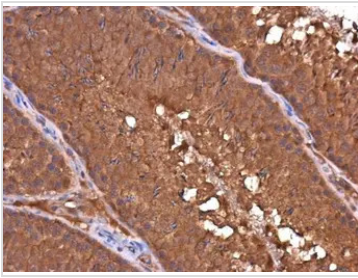
For laboratory research use only. Not for any clinical, therapeutic, or diagnostic use in humans or animals. Not for animal or human consumption.

Purchasers shall not, and agree not to enable third parties to, analyze, copy, reverse engineer or otherwise attempt to determine the structure or sequence of the product.



For full product information, images and publications, please visit our [website](#).

DATA IMAGES



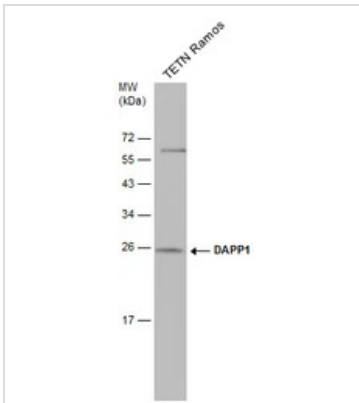
GTX633252 IHC-P Image

DAPP1 antibody [4H9] detects DAPP1 protein at cytoplasm in rat testis by immunohistochemical analysis.

Sample: Paraffin-embedded rat testis.

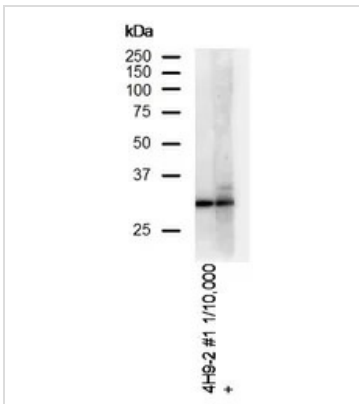
DAPP1 antibody [4H9] (GTX633252) diluted at 1:100.

Antigen Retrieval: Citrate buffer, pH 6.0, 15 min



GTX633252 WB Image

Whole cell extract (30 µg) was separated by 12% SDS-PAGE, and the membrane was blotted with DAPP1 antibody [4H9] (GTX633252) diluted at 1:500.



GTX633252 WB Image

WB analysis of A20 cell lysates using GTX633252 DAPP1 antibody [4H9].



For full product information, images and publications, please visit our [website](https://www.genetex.com).