

CDC25B antibody [EPR3459(2)]

Cat. No. GTX63329

Host	Rabbit
Clonality	Monoclonal
Isotype	IgG
Applications	WB, IP
Reactivity	Human

References (1)

Package

100 µl

Applications

Application Note

*Optimal dilutions/concentrations should be determined by the researcher.

Suggested dilution	Recommended dilution
WB	Assay dependent
IP	Assay dependent

Not tested in other applications.

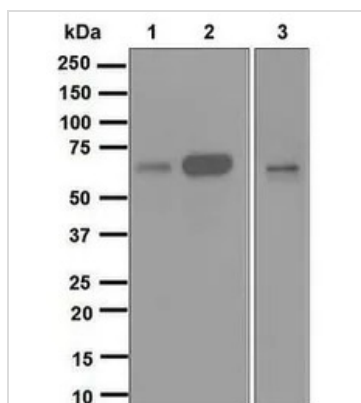
Calculated MW 65 kDa. ([Note](#))

Properties

Form	Liquid
Buffer	Buffer, 0.05% BSA, 50% Glycerol
Preservative	0.01% Sodium azide
Storage	Store as concentrated solution. Centrifuge briefly prior to opening vial. For short-term storage (1-2 weeks), store at 4°C. For long-term storage, aliquot and store at -20°C or below. Avoid multiple freeze-thaw cycles.
Immunogen	Synthetic peptide corresponding to residues in human Cdc25B
Purification	Tissue culture supernatant
Conjugation	Unconjugated
Note	For <i>In vitro</i> laboratory use only. Not for any clinical, therapeutic, or diagnostic use in humans or animals. Not for animal or human consumption. RabMAb® technology is covered by the following U.S. Patents, No. 5,675,063 and/or 7,429,488.



For full product information, images and publications, please visit our [website](#).

DATA IMAGES

GTX63329 WB Image

WB analysis of (1) K562, (2) U937 and (3) THP-1 lysates (10 µg per lane) using Cdc25B antibody [EPR3459(2)] at a dilution of 1:1,000.



For full product information, images and publications, please visit our [website](#).