

Enterovirus 71 VP1 antibody [GT185]

Cat. No. GTX633390

Host	Mouse
Clonality	Monoclonal
Isotype	IgG1
Applications	ICC/IF, ELISA
Reactivity	Enterovirus 71

References (3)

Package

100 µl, 25 µl

Applications

Application Note

*Optimal dilutions/concentrations should be determined by the researcher.

Suggested dilution	Recommended dilution
ICC/IF	Assay dependent
ELISA	Assay dependent

Not tested in other applications.

Product Note This antibody was raised against Enterovirus 71 VP1, and it does not cross-react with Enterovirus D68 VP1.

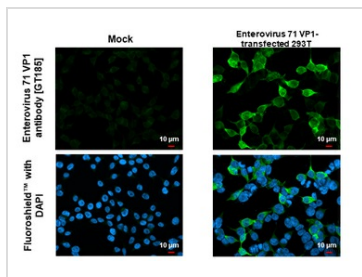
Properties

Form	Liquid
Buffer	PBS, 20% Glycerol
Preservative	No preservatives
Storage	Store as concentrated solution. Centrifuge briefly prior to opening vial. For short-term storage (1-2 weeks), store at 4°C. For long-term storage, aliquot and store at -20°C or below. Avoid multiple freeze-thaw cycles.
Concentration	1 mg/ml (Please refer to the vial label for the specific concentration.)
Immunogen	Carrier-protein conjugated synthetic peptide encompassing a sequence within the center region of Enterovirus 71 VP1 (EV71 virus (strain USA/BrCr/1970)). The exact sequence is proprietary.
Purification	Affinity purified by Protein G.
Conjugation	Unconjugated
Note	For laboratory research use only. Not for any clinical, therapeutic, or diagnostic use in humans or animals. Not for animal or human consumption. Purchasers shall not, and agree not to enable third parties to, analyze, copy, reverse engineer or otherwise attempt to determine the structure or sequence of the product.



For full product information, images and publications, please visit our [website](#).

DATA IMAGES

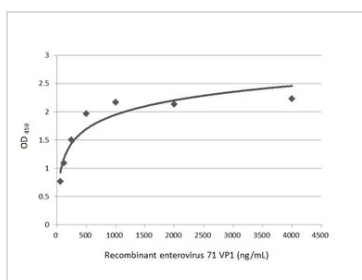
**GTX633390 ICC/IF Image**

Enterovirus 71 VP1 antibody [GT185] detects Enterovirus 71 VP1 protein by immunofluorescent analysis.

Sample: Mock and transfected 293T cells were fixed in 4% paraformaldehyde at RT for 15 min.

Green: Enterovirus 71 VP1 stained by Enterovirus 71 VP1 antibody [GT185] (GTX633390) diluted at 1:500.

Blue: Fluoroshield with DAPI (GTX30920).

**GTX633390 ELISA Image**

Indirect ELISA analysis was performed by coating the plate with recombinant Enterovirus 71 VP1 protein, His tag (GTX138560-pro) (4000-62.5 ng/mL). Coated protein was probed with Enterovirus 71 VP1 antibody [GT185] (GTX633390) (1 μg/mL). Goat anti-mouse IgG antibody (HRP) (GTX213111-01) (1:10000) was used to detect the bound primary antibody.



For full product information, images and publications, please visit our [website](#).