

BRG1 antibody [GT2712]

Cat. No. GTX633391

Host	Mouse
Clonality	Monoclonal
Isotype	IgG1
Applications	WB, ICC/IF, IHC-P, IHC-Fr
Reactivity	Human, Mouse, Rat

Package
100 µl, 25 µl

Applications

Application Note

*Optimal dilutions/concentrations should be determined by the researcher.

Suggested dilution	Recommended dilution
WB	1:500-1:3000
ICC/IF	1:100-1:1000
IHC-P	1:100-1:1000
IHC-Fr	1:100-1:1000

Not tested in other applications.

Calculated MW 185 kDa. ([Note](#))

Properties

Form	Liquid
Buffer	PBS
Preservative	No preservatives
Storage	Store as concentrated solution. Centrifuge briefly prior to opening vial. For short-term storage (1-2 weeks), store at 4°C. For long-term storage, aliquot and store at -20°C or below. Avoid multiple freeze-thaw cycles.
Concentration	2.44 mg/ml (Please refer to the vial label for the specific concentration.)
Immunogen	Recombinant protein encompassing a sequence within the N-terminus region of human BRG1. The exact sequence is proprietary.
Purification	Affinity purified by Protein G.
Conjugation	Unconjugated

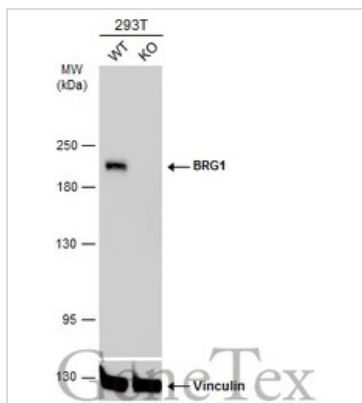


For full product information, images and publications, please visit our [website](#).

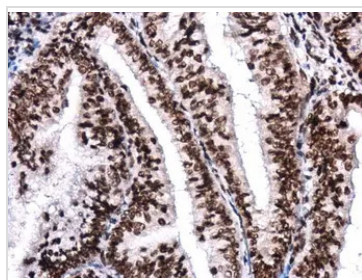
For laboratory research use only. Not for any clinical, therapeutic, or diagnostic use in humans or animals. Not for animal or human consumption.

Note

Purchasers shall not, and agree not to enable third parties to, analyze, copy, reverse engineer or otherwise attempt to determine the structure or sequence of the product.

DATA IMAGES

GTX633391 WB Image

Wild-type (WT) and BRG1 knockout (KO) 293T cell extracts (30 µg) were separated by 5% SDS-PAGE, and the membrane was blotted with BRG1 antibody [GT2712] (GTX633391) diluted at 1:1000. The HRP-conjugated anti-mouse IgG antibody (GTX213111-01) was used to detect the primary antibody, and the signal was developed with Trident ECL plus-Enhanced.

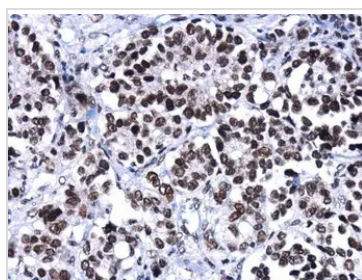

GTX633391 IHC-P Image

BRG1 antibody [GT2712] detects BRG1 protein at nucleus in human endometrial carcinoma by immunohistochemical analysis.

Sample: Paraffin-embedded human endometrial carcinoma.

BRG1 antibody [GT2712] (GTX633391) diluted at 1:250.

Antigen Retrieval: Citrate buffer, pH 6.0, 15 min

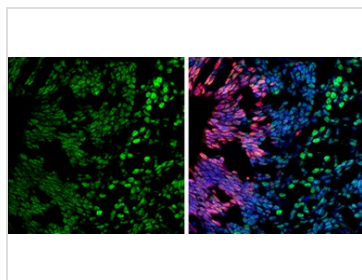

GTX633391 IHC-P Image

BRG1 antibody [GT2712] detects BRG1 protein at nucleus in human oral carcinoma by immunohistochemical analysis.

Sample: Paraffin-embedded human oral carcinoma.

BRG1 antibody [GT2712] (GTX633391) diluted at 1:250.

Antigen Retrieval: Citrate buffer, pH 6.0, 15 min


GTX633391 IHC-Fr Image

BRG1 antibody [GT2712] detects BRG1 protein by immunohistochemical analysis.

Sample: Frozen-sectioned rat E13.5 brain.

Green: BRG1 stained by BRG1 antibody [GT2712] (GTX633391) diluted at 1:250.

Red: SOX2, stained by SOX2 antibody [N1C3] (GTX101507) diluted at 1:500.

Blue: Fluoroshield with DAPI (GTX30920).



For full product information, images and publications, please visit our [website](https://www.genetex.com).