

Glypican-3 antibody [GT2473]

Cat. No. GTX633410

Host	Mouse
Clonality	Monoclonal
Isotype	IgG1
Applications	WB, ICC/IF, IHC-P
Reactivity	Human

References (1)

★★★★★ Review (1)

Package

100 µl, 25 µl

PRODUCT

Summary

Glypican-3 (GPC3) is a glycoprotein attached to the cell membrane. It has a predicted molecular weight of 66 kDa. GPC3 overexpression is found in human hepatocellular carcinoma (HCC), but not in healthy adult liver. Studies have shown GPC3 to be a reliable serological and immunohistochemical marker for HCC diagnosis, and a potential target for immunotherapies.

Applications

Application Note

*Optimal dilutions/concentrations should be determined by the researcher.

Suggested dilution	Recommended dilution
WB	1:500-1:3000
ICC/IF	1:100-1:1000
IHC-P	1:100-1:1000

Not tested in other applications.

Calculated MW 66 kDa. ([Note](#))

Properties

Form	Liquid
Buffer	PBS, 20% Glycerol
Preservative	No preservatives
Storage	Store as concentrated solution. Centrifuge briefly prior to opening vial. For short-term storage (1-2 weeks), store at 4°C. For long-term storage, aliquot and store at -20°C or below. Avoid multiple freeze-thaw cycles.
Concentration	0.4 mg/ml (Please refer to the vial label for the specific concentration.)
Immunogen	Recombinant protein encompassing a sequence within the C-terminus region of human Glypican-3. The exact sequence is proprietary.
Purification	Affinity purified by Protein G.
Conjugation	Unconjugated

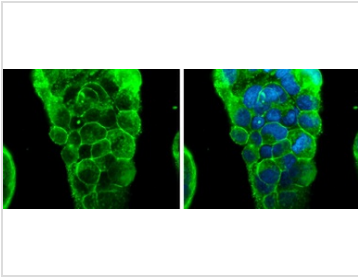


For full product information, images and publications, please visit our [website](#).

For laboratory research use only. Not for any clinical, therapeutic, or diagnostic use in humans or animals. Not for animal or human consumption.

Note

Purchasers shall not, and agree not to enable third parties to, analyze, copy, reverse engineer or otherwise attempt to determine the structure or sequence of the product.

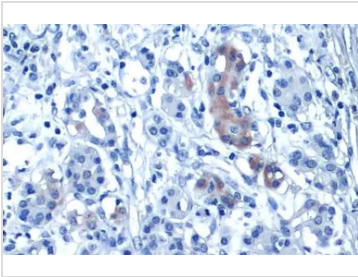
DATA IMAGES

GTX633410 ICC/IF Image

Glypican-3 antibody [GT2473] detects Glypican-3 protein at cell membrane by immunofluorescent analysis.

Sample: HepG2 cells were fixed in 4% paraformaldehyde at RT for 15 min.

Green: Glypican-3 protein stained by Glypican-3 antibody [GT2473] (GTX633410) diluted at 1:250.

Blue: Hoechst 33342 staining.

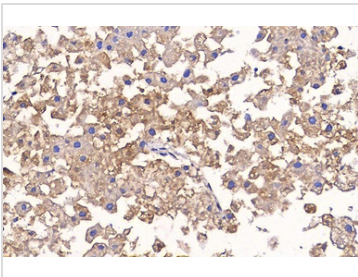

GTX633410 IHC-P Image

Glypican-3 antibody [GT2473] detects Glypican-3 protein at cytoplasm by immunohistochemical analysis.

Sample: Paraffin-embedded human pancreatic cancer.

Glypican-3 stained by Glypican-3 antibody [GT2473] (GTX633410) diluted at 1:200.

Antigen Retrieval: Citrate buffer, pH 6.0, 15 min

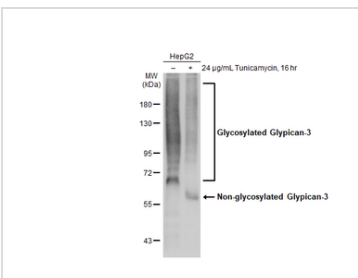

GTX633410 IHC-P Image

Glypican-3 antibody [GT2473] detects Glypican-3 protein at cytoplasm by immunohistochemical analysis (Autostainer Formulated).

Sample: Paraffin-embedded human liver cancer.

Glypican-3 stained by Glypican-3 antibody [GT2473] (GTX633410) diluted at 1:100.

Antigen Retrieval: Citrate buffer, 20 min


GTX633410 WB Image

Untreated (–) and treated (+) HepG2 whole cell extracts (30 µg) were separated by 7.5% SDS-PAGE, and the membrane was blotted with Glypican-3 antibody [GT2473] (GTX633410) diluted at 1:2000. The HRP-conjugated anti-mouse IgG antibody (GTX213111-01) was used to detect the primary antibody.



For full product information, images and publications, please visit our [website](https://www.genetex.com).