

# Histone H4K8ac (acetyl Lys8) antibody [GT478]

**Cat. No. GTX633420**

<b>Host</b>	Mouse
<b>Clonality</b>	Monoclonal
<b>Isotype</b>	IgG3
<b>Application</b>	WB, ICC/IF, IHC-P
<b>Reactivity</b>	Human, Mouse, Rat

Reference ( 1 )  
 Package  
 100 µl, 25 µl

## APPLICATION

### Application Note

\*Optimal dilutions/concentrations should be determined by the researcher.

Suggested dilution	Recommended dilution
WB	1:500-1:3000
ICC/IF	1:100-1:1000
IHC-P	1:100-1:1000

Not tested in other applications.

## PROPERTIES

<b>Form</b>	Liquid
<b>Buffer</b>	PBS
<b>Preservative</b>	No preservative
<b>Storage</b>	Store as concentrated solution. Centrifuge briefly prior to opening vial. For short-term storage (1-2 weeks), store at 4°C. For long-term storage, aliquot and store at -20°C or below. Avoid multiple freeze-thaw cycles.
<b>Concentration</b>	0.95 mg/ml (Please refer to the vial label for the specific concentration.)
<b>Immunogen</b>	Carrier-protein conjugated synthetic peptide surrounding acetyl Lys8 of human Histone H4. The exact sequence is proprietary.
<b>Purification</b>	Affinity purified by Protein G.
<b>Conjugation</b>	Unconjugated

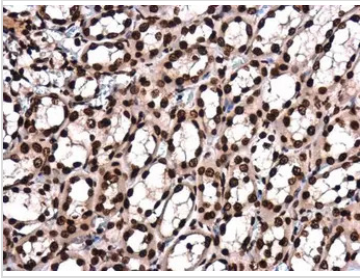
### Note

For laboratory research use only. Not for any clinical, therapeutic, or diagnostic use in humans or animals. Not for animal or human consumption.

Purchasers shall not, and agree not to enable third parties to, analyze, copy, reverse engineer or otherwise attempt to determine the structure or sequence of the product.



For full product information, images and publications, please visit our [website](#).

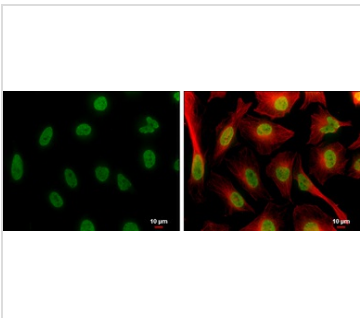
**DATA IMAGES**

**GTX633420 IHC-P Image**

Histone H4K8ac (acetyl Lys8) antibody [GT478] detects Histone H4K8ac (acetyl Lys8) protein at cytoplasm and nucleus in rat kidney by immunohistochemical analysis.

Sample: Paraffin-embedded rat kidney.

Histone H4K8ac (acetyl Lys8) antibody [GT478] (GTX633420) diluted at 1:200.

Antigen Retrieval: Citrate buffer, pH 6.0, 15 min


**GTX633420 ICC/IF Image**

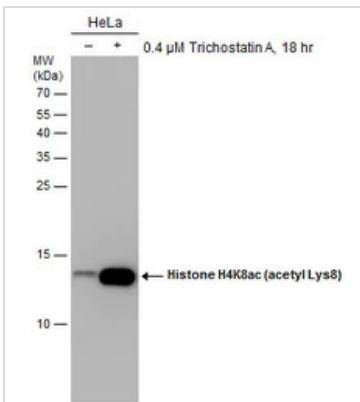
Histone H4K8ac (acetyl Lys8) antibody [GT478] detects Histone H4K8ac (acetyl Lys8) protein at nucleus by immunofluorescent analysis.

Sample: HeLa cells were fixed in 4% paraformaldehyde at RT for 15 min.

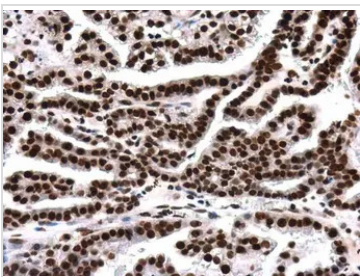
Green: Histone H4K8ac (acetyl Lys8) protein stained by Histone H4K8ac (acetyl Lys8) antibody [GT478] (GTX633420) diluted at 1:400.

Red: alpha Tubulin, a cytoskeleton marker, stained by alpha Tubulin antibody (GTX102078) diluted at 1:300.

Scale bar = 10 μm.


**GTX633420 WB Image**

Untreated (-) and treated (+) HeLa whole cell extracts (30 μg) were separated by 15% SDS-PAGE, and the membrane was blotted with Histone H4K8ac (acetyl Lys8) antibody (GTX633420) diluted at 1:1000.


**GTX633420 IHC-P Image**

Histone H4K8ac (acetyl Lys8) antibody [GT478] detects Histone H4K8ac (acetyl Lys8) protein at nucleus in human ovary by immunohistochemical analysis.

Sample: Paraffin-embedded human ovary.

Histone H4K8ac (acetyl Lys8) antibody [GT478] (GTX633420) diluted at 1:200.

Antigen Retrieval: Citrate buffer, pH 6.0, 15 min



For full product information, images and publications, please visit our [website](https://www.genetex.com).