

ATP6V1A antibody [GT811]

Cat. No. GTX633543

Host	Mouse
Clonality	Monoclonal
Isotype	IgG2b
Application	WB, ICC/IF, IHC-P, FACS
Reactivity	Human, Rat

Package
100 µl, 25 µl

APPLICATION

Application Note

*Optimal dilutions/concentrations should be determined by the researcher.

Suggested dilution	Recommended dilution
WB	1:500-1:3000
ICC/IF	1:100-1:1000
IHC-P	Assay dependent
FACS	1:50-1:200

Not tested in other applications.

Calculated MW 68 kDa. ([Note](#))

PROPERTIES

Form	Liquid
Buffer	PBS
Preservative	No preservative
Storage	Store as concentrated solution. Centrifuge briefly prior to opening vial. For short-term storage (1-2 weeks), store at 4°C. For long-term storage, aliquot and store at -20°C or below. Avoid multiple freeze-thaw cycles.
Concentration	2.99 mg/ml (Please refer to the vial label for the specific concentration.)
Immunogen	Recombinant protein encompassing a sequence within the center region of human ATP6V1A. The exact sequence is proprietary.
Purification	Affinity purified by Protein A.
Conjugation	Unconjugated

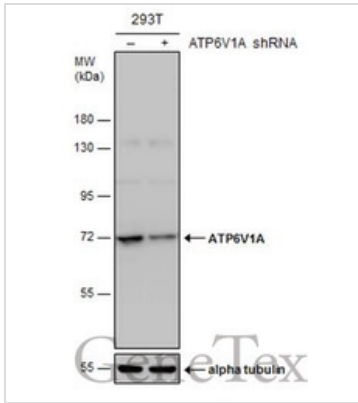


For full product information, images and publications, please visit our [website](#).

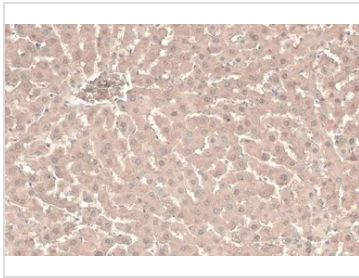
For laboratory research use only. Not for any clinical, therapeutic, or diagnostic use in humans or animals. Not for animal or human consumption.

Note

Purchasers shall not, and agree not to enable third parties to, analyze, copy, reverse engineer or otherwise attempt to determine the structure or sequence of the product.

DATA IMAGES

GTX633543 WB Image

Non-transfected (-) and transfected (+) 293T whole cell extracts (30 µg) were separated by 7.5% SDS-PAGE, and the membrane was blotted with ATP6V1A antibody [GT811] (GTX633543) diluted at 1:500.

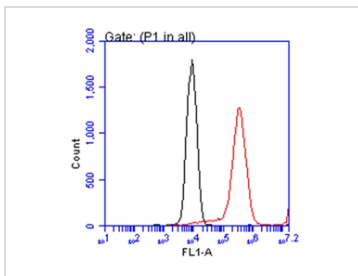

GTX633543 IHC-P Image

ATP6V1A antibody [GT811] detects ATP6V1A protein at cytoplasm by immunohistochemical analysis.

Sample: Paraffin-embedded rat liver.

ATP6V1A stained by ATP6V1A antibody [GT811] (GTX633543) diluted at 1:200.

Antigen Retrieval: Citrate buffer, pH 6.0, 15 min


GTX633543 FACS Image

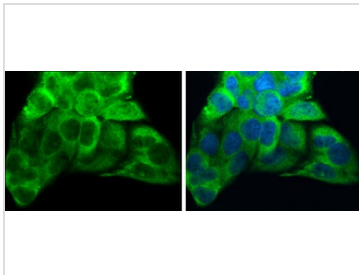
ATP6V1A antibody [GT811] (GTX633543) detects ATP6V1A protein by flow cytometry analysis.

Sample: HepG2 cell.

Black: Unlabelled sample was used as a control.

Red: ATP6V1A antibody [GT811] (GTX633543) dilution: 1:50.

Acquisition of 20,000 events were collected for FACS analysis.


GTX633543 ICC/IF Image

ATP6V1A antibody [GT811] detects ATP6V1A protein at cytoplasm by immunofluorescent analysis.

Sample: Hep G2 cells were fixed in 4% paraformaldehyde at RT for 15 min.

Green: ATP6V1A protein stained by ATP6V1A antibody [GT811] (GTX633543) diluted at 1:200.

Blue: Hoechst 33342 staining.



For full product information, images and publications, please visit our [website](https://www.genetex.com).