

# ATP6V1A antibody [GT1561]

**Cat. No. GTX633544**

<b>Host</b>	Mouse
<b>Clonality</b>	Monoclonal
<b>Isotype</b>	IgG1
<b>Application</b>	WB, FACS
<b>Reactivity</b>	Human

**Package**  
100 µl, 25 µl

## APPLICATION

### Application Note

\*Optimal dilutions/concentrations should be determined by the researcher.

Suggested dilution	Recommended dilution
WB	1:500-1:3000
FACS	1:50-1:200

Not tested in other applications.

**Calculated MW** 68 kDa. ( [Note](#) )

## PROPERTIES

<b>Form</b>	Liquid
<b>Buffer</b>	PBS
<b>Preservative</b>	No preservative
<b>Storage</b>	Store as concentrated solution. Centrifuge briefly prior to opening vial. For short-term storage (1-2 weeks), store at 4°C. For long-term storage, aliquot and store at -20°C or below. Avoid multiple freeze-thaw cycles.
<b>Concentration</b>	0.8 mg/ml (Please refer to the vial label for the specific concentration.)
<b>Immunogen</b>	Recombinant protein encompassing a sequence within the center region of human ATP6V1A. The exact sequence is proprietary.
<b>Purification</b>	Affinity purified by Protein G.
<b>Conjugation</b>	Unconjugated

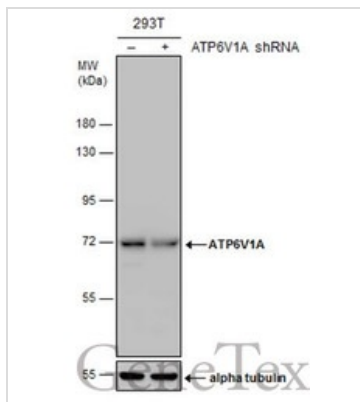
### Note

For laboratory research use only. Not for any clinical, therapeutic, or diagnostic use in humans or animals. Not for animal or human consumption.

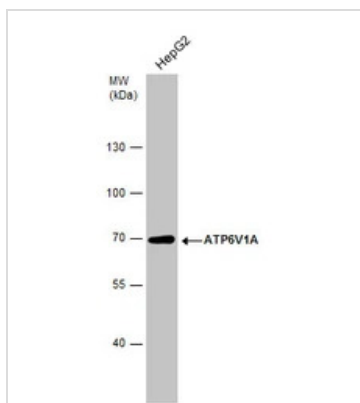
Purchasers shall not, and agree not to enable third parties to, analyze, copy, reverse engineer or otherwise attempt to determine the structure or sequence of the product.



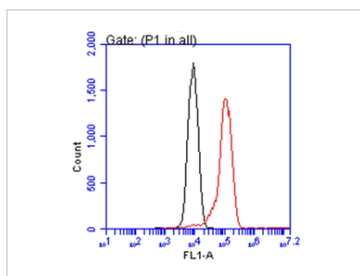
For full product information, images and publications, please visit our [website](#).

**DATA IMAGES**

**GTX633544 WB Image**

Non-transfected (–) and transfected (+) 293T whole cell extracts (30 µg) were separated by 7.5% SDS-PAGE, and the membrane was blotted with ATP6V1A antibody [GT1561] (GTX633544) diluted at 1:500.


**GTX633544 WB Image**

Whole cell extract (30 µg) was separated by 7.5% SDS-PAGE, and the membrane was blotted with ATP6V1A antibody [GT1561] (GTX633544) diluted at 1:1000.


**GTX633544 FACS Image**

ATP6V1A antibody [GT1561] (GTX633544) detects ATP6V1A protein by flow cytometry analysis.

Sample: HepG2 cell.

Black: Unlabelled sample was used as a control.

Red: ATP6V1A antibody [GT1561] (GTX633544) dilution: 1:50.

Acquisition of 20,000 events were collected for FACS analysis.



For full product information, images and publications, please visit our [website](https://www.genetex.com).