

Enterovirus 71 VP1 antibody [GT9512]

Cat. No. GTX633583

| | |
|---------------------|----------------|
| Host | Mouse |
| Clonality | Monoclonal |
| Isotype | IgG2a |
| Applications | WB, ELISA |
| Reactivity | Enterovirus 71 |

Package
100 µl, 25 µl

Applications

Application Note

*Optimal dilutions/concentrations should be determined by the researcher.

| Suggested dilution | Recommended dilution |
|--------------------|----------------------|
| WB | 1:500-1:3000 |
| ELISA | Assay dependent |

Not tested in other applications.

Product Note This antibody is specific for EV71 VP1 protein and does not cross react with EV-D68 VP1 protein.

Properties

| | |
|----------------------|--|
| Form | Liquid |
| Buffer | PBS |
| Preservative | No preservatives |
| Storage | Store as concentrated solution. Centrifuge briefly prior to opening vial. For short-term storage (1-2 weeks), store at 4°C. For long-term storage, aliquot and store at -20°C or below. Avoid multiple freeze-thaw cycles. |
| Concentration | 1.11 mg/ml (Please refer to the vial label for the specific concentration.) |
| Immunogen | Carrier-protein conjugated synthetic peptide encompassing a sequence within the center region of Enterovirus 71 VP1 (EV71 virus (strain USA/BrCr/1970)). The exact sequence is proprietary. |
| Purification | Affinity purified by Protein A. |
| Conjugation | Unconjugated |

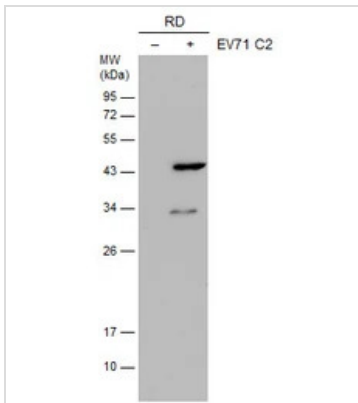
Note For laboratory research use only. Not for any clinical, therapeutic, or diagnostic use in humans or animals. Not for animal or human consumption.

Purchasers shall not, and agree not to enable third parties to, analyze, copy, reverse engineer or otherwise attempt to determine the structure or sequence of the product.



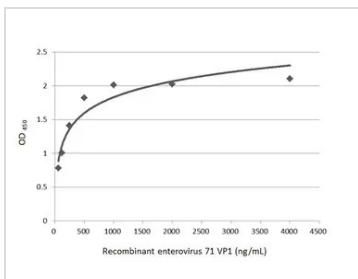
For full product information, images and publications, please visit our [website](#).

DATA IMAGES



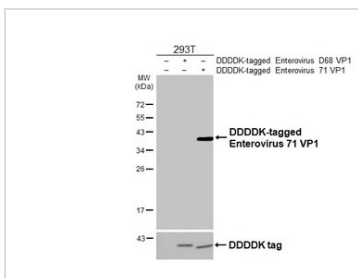
GTX633583 WB Image

Non-infected (–) and infected (+) RD whole cell extracts (30 µg) were separated by 12% SDS-PAGE, and the membrane was blotted with Enterovirus 71 VP1 antibody [GT9512] (GTX633583) diluted at 1:500.



GTX633583 ELISA Image

Indirect ELISA analysis was performed by coating the plate with recombinant Enterovirus 71 VP1 protein, His tag (GTX138560-pro) (4000-62.5 ng/mL). Coated protein was probed with Enterovirus 71 VP1 antibody [GT9512] (GTX633583) (1 µg/mL). Goat anti-mouse IgG antibody (HRP) (GTX213111-01) (1:10000) was used to detect the bound primary antibody.



GTX633583 WB Image

Non-transfected (–) and transfected (+) 293T whole cell extracts were separated by 12% SDS-PAGE, and the membrane was blotted with Enterovirus 71 VP1 antibody [GT9512] (GTX633583) diluted at 1:5000. The HRP-conjugated anti-mouse IgG antibody (GTX213111-01) was used to detect the primary antibody.



For full product information, images and publications, please visit our [website](https://www.genetex.com).