

IDE antibody [GT286]

Cat. No. GTX633625

Host	Mouse
Clonality	Monoclonal
Isotype	IgG1
Applications	WB, IHC-P
Reactivity	Human, Mouse, Rat

References (2)

Package

100 µl, 25 µl

Applications

Application Note

*Optimal dilutions/concentrations should be determined by the researcher.

Suggested dilution	Recommended dilution
WB	1:500-1:3000
IHC-P	1:100-1:1000

Not tested in other applications.

Calculated MW 118 kDa. ([Note](#))

Properties

Form	Liquid
Buffer	PBS, 20% Glycerol
Preservative	No preservatives
Storage	Store as concentrated solution. Centrifuge briefly prior to opening vial. For short-term storage (1-2 weeks), store at 4°C. For long-term storage, aliquot and store at -20°C or below. Avoid multiple freeze-thaw cycles.
Concentration	1 mg/ml (Please refer to the vial label for the specific concentration.)
Immunogen	Recombinant protein encompassing a sequence within the N-terminus region of human IDE. The exact sequence is proprietary.
Purification	Affinity purified by Protein G.
Conjugation	Unconjugated

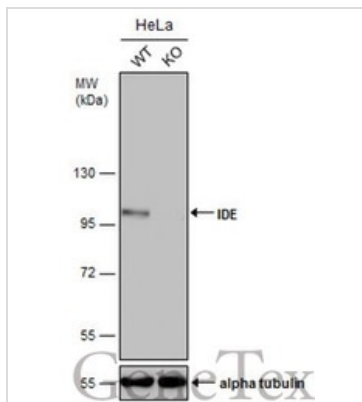
Note

For laboratory research use only. Not for any clinical, therapeutic, or diagnostic use in humans or animals. Not for animal or human consumption.

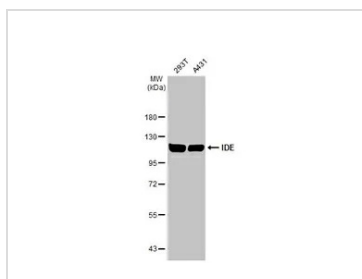
Purchasers shall not, and agree not to enable third parties to, analyze, copy, reverse engineer or otherwise attempt to determine the structure or sequence of the product.



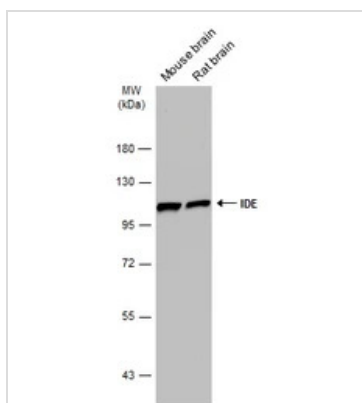
For full product information, images and publications, please visit our [website](#).

DATA IMAGES

GTX633625 WB Image

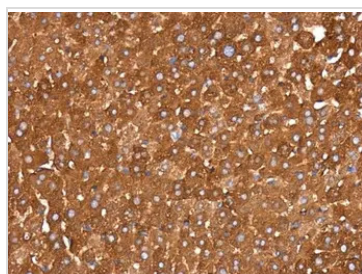
Wild-type (WT) and IDE knockout (KO) HeLa cell extracts (30 μ g) were separated by 7.5% SDS-PAGE, and the membrane was blotted with IDE antibody [GT286] (GTX633625) diluted at 1:500. The HRP-conjugated anti-mouse IgG antibody (GTX213111-01) was used to detect the primary antibody.


GTX633625 WB Image

Various whole cell extracts (30 μ g) were separated by 7.5% SDS-PAGE, and the membrane was blotted with IDE antibody [GT286] (GTX633625) diluted at 1:1000. The HRP-conjugated anti-mouse IgG antibody (GTX213111-01) was used to detect the primary antibody.


GTX633625 WB Image

Various tissue extracts (50 μ g) were separated by 7.5% SDS-PAGE, and the membrane was blotted with IDE antibody [GT286] (GTX633625) diluted at 1:1000. The HRP-conjugated anti-mouse IgG antibody (GTX213111-01) was used to detect the primary antibody.


GTX633625 IHC-P Image

IDE antibody [GT286] detects IDE protein at cytoplasm in mouse liver by immunohistochemical analysis.

Sample: Paraffin-embedded mouse liver.

IDE antibody [GT286] (GTX633625) diluted at 1:200.

Antigen Retrieval: Citrate buffer, pH 6.0, 15 min



For full product information, images and publications, please visit our [website](https://www.genetex.com).