

PSAT1 antibody [GT1353]

Cat. No. GTX633629

Host	Mouse
Clonality	Monoclonal
Isotype	IgG1
Application	WB, ICC/IF, IHC-P
Reactivity	Human, Mouse

Package
100 µl, 25 µl

APPLICATION

Application Note

*Optimal dilutions/concentrations should be determined by the researcher.

Suggested dilution	Recommended dilution
WB	1:500-1:3000
ICC/IF	1:100-1:1000
IHC-P	Assay dependent

Not tested in other applications.

Calculated MW 40 kDa. ([Note](#))

PROPERTIES

Form	Liquid
Buffer	PBS, 20% Glycerol
Preservative	No Preservative
Storage	Store as concentrated solution. Centrifuge briefly prior to opening vial. For short-term storage (1-2 weeks), store at 4°C. For long-term storage, aliquot and store at -20°C or below. Avoid multiple freeze-thaw cycles.
Concentration	1 mg/ml (Please refer to the vial label for the specific concentration.)
Immunogen	Recombinant protein encompassing a sequence within the center region of human PSAT1. The exact sequence is proprietary.
Purification	Affinity purified by Protein G.
Conjugation	Unconjugated

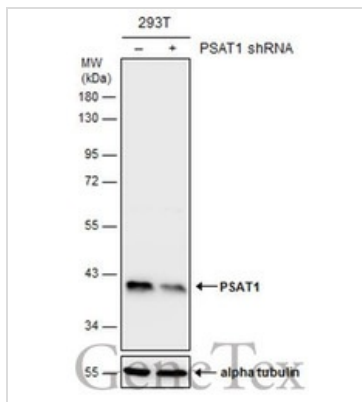
Note For laboratory research use only. Not for any clinical, therapeutic, or diagnostic use in humans or animals. Not for animal or human consumption.

Purchasers shall not, and agree not to enable third parties to, analyze, copy, reverse engineer or otherwise attempt to determine the structure or sequence of the product.

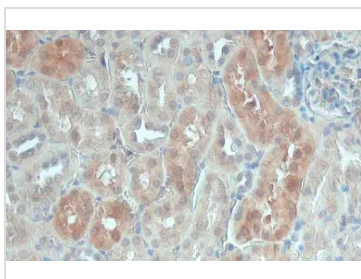


For full product information, images and publications, please visit our [website](#).

DATA IMAGES


GTX633629 WB Image

Non-transfected (–) and transfected (+) 293T whole cell extracts (30 µg) were separated by 10% SDS-PAGE, and the membrane was blotted with PSAT1 antibody [GT1353] (GTX633629) diluted at 1:500.

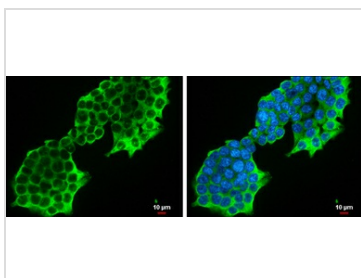

GTX633629 IHC-P Image

PSAT1 antibody [GT1353] detects secreted PSAT1 protein by immunohistochemical analysis.

Sample: Paraffin-embedded mouse kidney.

PSAT1 stained by PSAT1 antibody [GT1353] (GTX633629) diluted at 1:200.

Antigen Retrieval: Citrate buffer, pH 6.0, 15 min


GTX633629 ICC/IF Image

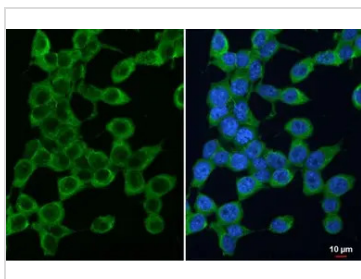
PSAT1 antibody [GT1353] detects PSAT1 protein at cytoplasm by immunofluorescent analysis.

Sample: HCT 116 cells were fixed in 4% paraformaldehyde at RT for 15 min.

Green: PSAT1 protein stained by PSAT1 antibody [GT1353] (GTX633629) diluted at 1:500.

Blue: Hoechst 33342 staining.

Scale bar = 10 µm.


GTX633629 ICC/IF Image

PSAT1 antibody [GT1353] detects PSAT1 protein at cytoplasm by immunofluorescent analysis.

Sample: 293T cells were fixed in 4% paraformaldehyde at RT for 15 min.

Green: PSAT1 stained by PSAT1 antibody [GT1353] (GTX633629) diluted at 1:500.

Blue: Fluoroshield with DAPI (GTX30920).



For full product information, images and publications, please visit our [website](https://www.genetex.com).