

## eIF3H / EIF3S3 antibody [GT35512]

Cat. No. GTX633631

Host	Mouse
Clonality	Monoclonal
Isotype	IgG2b
Applications	WB, ICC/IF, IHC-P
Reactivity	Human, Mouse

References ( 1 )

Package

100 µl, 25 µl

## Applications

## Application Note

\*Optimal dilutions/concentrations should be determined by the researcher.

Suggested dilution	Recommended dilution
WB	1:500-1:3000
ICC/IF	1:100-1:1000
IHC-P	1:100-1:1000

Not tested in other applications.

Calculated MW 40 kDa. ( [Note](#) )

## Properties

Form	Liquid
Buffer	PBS
Preservative	No preservatives
Storage	Store as concentrated solution. Centrifuge briefly prior to opening vial. For short-term storage (1-2 weeks), store at 4°C. For long-term storage, aliquot and store at -20°C or below. Avoid multiple freeze-thaw cycles.
Concentration	1 mg/ml (Please refer to the vial label for the specific concentration.)
Immunogen	Recombinant protein encompassing a sequence within the center region of human eIF3H / EIF3S3. The exact sequence is proprietary.
Purification	Affinity purified by Protein A.
Conjugation	Unconjugated

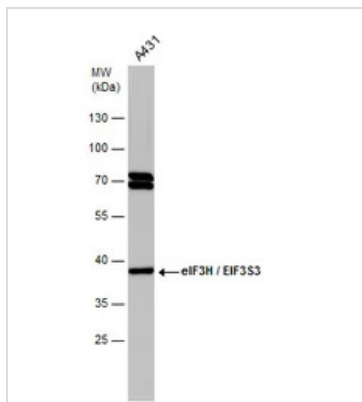
## Note

For laboratory research use only. Not for any clinical, therapeutic, or diagnostic use in humans or animals. Not for animal or human consumption.

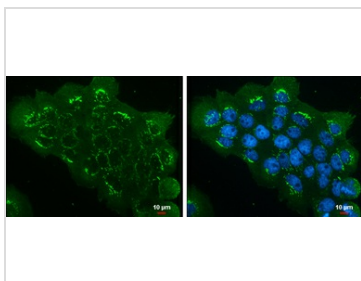
Purchasers shall not, and agree not to enable third parties to, analyze, copy, reverse engineer or otherwise attempt to determine the structure or sequence of the product.



For full product information, images and publications, please visit our [website](#).

**DATA IMAGES**

**GTX633631 WB Image**

Whole cell extract (30 µg) was separated by 10% SDS-PAGE, and the membrane was blotted with eIF3H / EIF3S3 antibody [GT35512] (GTX633631) diluted at 1:1000.


**GTX633631 ICC/IF Image**

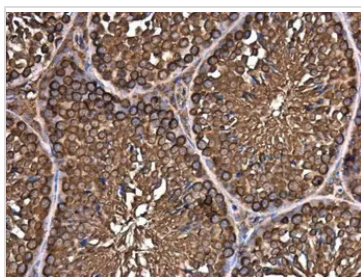
eIF3H / EIF3S3 antibody [GT35512] detects eIF3H / EIF3S3 protein at cytoplasm by immunofluorescent analysis.

Sample: A431 cells were fixed in 4% paraformaldehyde at RT for 15 min.

Green: eIF3H / EIF3S3 protein stained by eIF3H / EIF3S3 antibody [GT35512] (GTX633631) diluted at 1:500.

Blue: Hoechst 33342 staining.

Scale bar = 10 µm.


**GTX633631 IHC-P Image**

eIF3H / EIF3S3 antibody [GT35512] detects eIF3H / EIF3S3 protein at cytoplasm in mouse testis by immunohistochemical analysis.

Sample: Paraffin-embedded mouse testis.

eIF3H / EIF3S3 antibody [GT35512] (GTX633631) diluted at 1:200.

Antigen Retrieval: Citrate buffer, pH 6.0, 15 min



For full product information, images and publications, please visit our [website](https://www.genetex.com).