

## Dengue virus Capsid protein antibody [GT574]

Cat. No. GTX633632

Host	Mouse
Clonality	Monoclonal
Isotype	IgG2a
Application	WB, ICC/IF, IHC-P
Reactivity	Dengue virus 2, Dengue virus 4

Reference ( 1 )

★★★★★ Review ( 1 )

Package

100 µl, 25 µl

## APPLICATION

## Application Note

\*Optimal dilutions/concentrations should be determined by the researcher.

Suggested dilution	Recommended dilution
WB	1:500-1:3000
ICC/IF	1:100-1:1000
IHC-P	1:100-1:1000

Not tested in other applications.

Calculated MW 12 kDa. ( [Note](#) )

## PROPERTIES

Form	Liquid
Buffer	PBS, 20% Glycerol
Preservative	No Preservative
Storage	Store as concentrated solution. Centrifuge briefly prior to opening vial. For short-term storage (1-2 weeks), store at 4°C. For long-term storage, aliquot and store at -20°C or below. Avoid multiple freeze-thaw cycles.
Concentration	1 mg/ml (Please refer to the vial label for the specific concentration.)
Immunogen	Full length Dengue virus Capsid recombinant protein. (Dengue virus 2 (strain 16681 PDK 53))
Purification	Affinity purified by Protein A.
Conjugation	Unconjugated

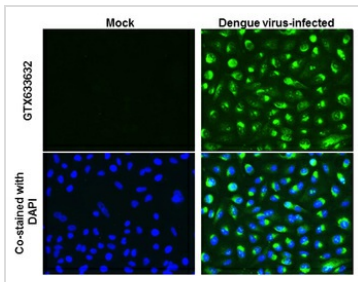
## Note

For laboratory research use only. Not for any clinical, therapeutic, or diagnostic use in humans or animals. Not for animal or human consumption.

Purchasers shall not, and agree not to enable third parties to, analyze, copy, reverse engineer or otherwise attempt to determine the structure or sequence of the product.



For full product information, images and publications, please visit our [website](#).

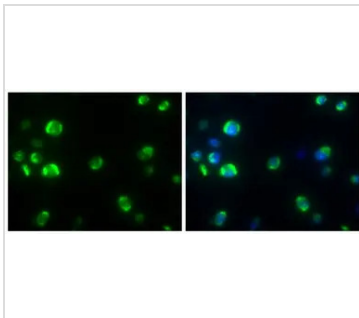
**DATA IMAGES**

**GTx633632 ICC/IF Image**

Dengue virus Capsid protein antibody [GT574] detects Dengue virus Capsid protein at cytoplasm by immunofluorescent analysis.

Sample: Mock and infected A549 cells were fixed in 4% paraformaldehyde at RT for 1 hr.

Green: Dengue virus Capsid protein stained by Dengue virus Capsid protein antibody [GT574] (GTx633632) diluted at 1:510.

Blue: nuclear staining.


**GTx633632 IHC-P Image**

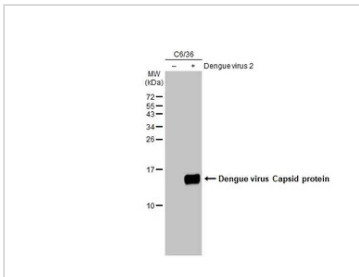
Dengue virus Capsid protein antibody [GT574] detects Dengue virus Capsid protein protein at cytoplasm by immunohistochemical analysis.

Sample: Paraffin-embedded BHK-21 infected with dengue virus.

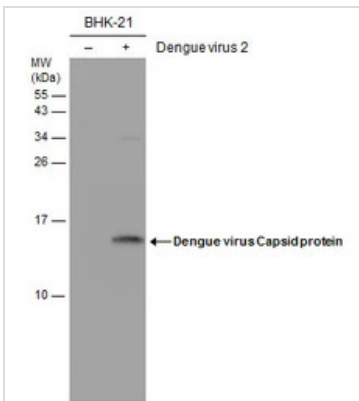
Green: Dengue virus Capsid protein stained by Dengue virus Capsid protein antibody [GT574] (GTx633632) diluted at 1:1000.

Blue: Fluoroshield with DAPI (GTx30920).

Antigen Retrieval: Citrate buffer, pH 6.0, 15 min


**GTx633632 WB Image**

Non-infected (-) and infected (+) C6/36 whole cell extracts (15 µg) were separated by 15% SDS-PAGE, and the membrane was blotted with Dengue virus Capsid protein antibody [GT574] (GTx633632) diluted at 1:1000. The HRP-conjugated anti-mouse IgG antibody (GTx213111-01) was used to detect the primary antibody.


**GTx633632 WB Image**

Non-infected (-) and infected (+) BHK-21 whole cell extracts (15 µg) were separated by 15% SDS-PAGE, and the membrane was blotted with Dengue virus Capsid protein antibody [GT574] (GTx633632) diluted at 1:1000.



For full product information, images and publications, please visit our [website](https://www.genetex.com).